

CATEGORY 100

Crystalline Bodies

100I. cystoliths

100IA. Spherical (diagnostic level: generalized arboreal)

[These are stomata, Category 120; diagnostic level under study:

100IB. Hemispherical

a. smooth surface

1. bilobate from top (Flacourtiaceae, 41 *Cesearia sylvestria*, family level diagnostic)

2. rounded/elliptical from top (Flacourtiaceae, 41 *Cesearia sylvestria*, family level diagnostic)

b. rough/verrucose surface (Flacourtiaceae, 1377 *Pleuranthodendron lindenii*, family level diagnostic)]

100IC. elongated

a. smooth (Araceae, *Dioscorea*. diagnostic as root/tuber tissue)

b. rough, verrucose surface (diagnostic level: generalized arboreal)

100ID. bulbous with distinct “stalk” and “bulb” (diagnostic level: generalized arboreal)

100II. raphides

100III. potassium chlorate crystals (processing by-product)

100IV. cubical crystals, clear to opaque, not granular. Probably calcium carbonate

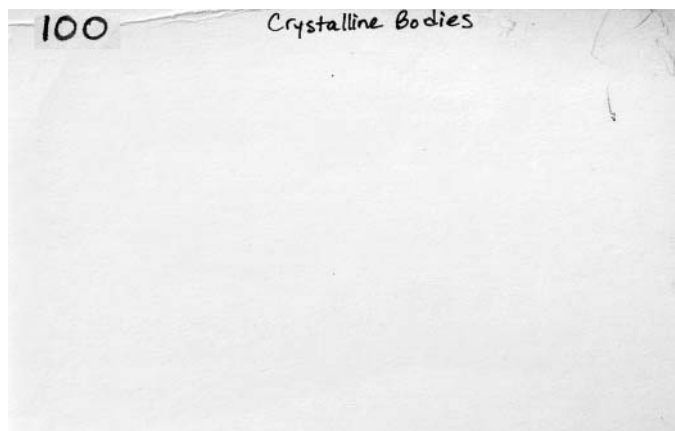
100V. Tabular crystals with granular surfaces. Probably calcium carbonate.

100VA Acute and obtuse angles form edges. (Bombacaceae, *Ceiba* wood; diagnostic level under study)

100VB tabular crystals with curved and/or right angle edges

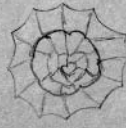
100VI. Blocky crystals (not tabular) with granular surfaces

*NO card in MU card file

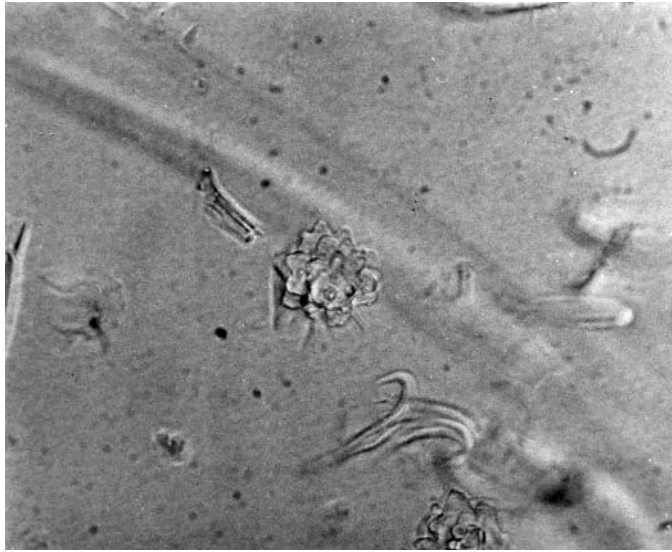


100I Cystoliths
 - FOR OTHER SPHERES
 LOOK IN SPHERES
 80 I
 100I A
 SPHERICAL CYSTOLITHS

100I card 1.JPG

100 Cystoliths 80IF

 - faceted/scalloped spheres from Cucurbitaceae are actually cystoliths
 - see 80IF

100 card 2.JPG

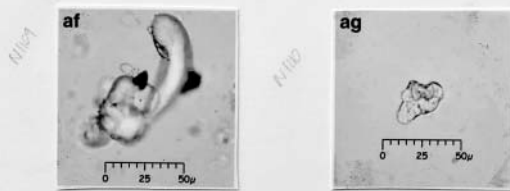


100IA photo 1f.JPG

100IA
 578 R 117-20
 Boehmeria aspera
 verrucose cystoliths
 scale 1:5

100IA photo 1b.JPG

100ICa Smooth cystolith, sculptured: Cystoliths are found in leaves of numerous taxa. We observed these smooth, sculptured cystoliths in *Dioscorea* and Araceae tubers.



100ICa photo 1f.JPG

Cystolith, rough verrucose surface

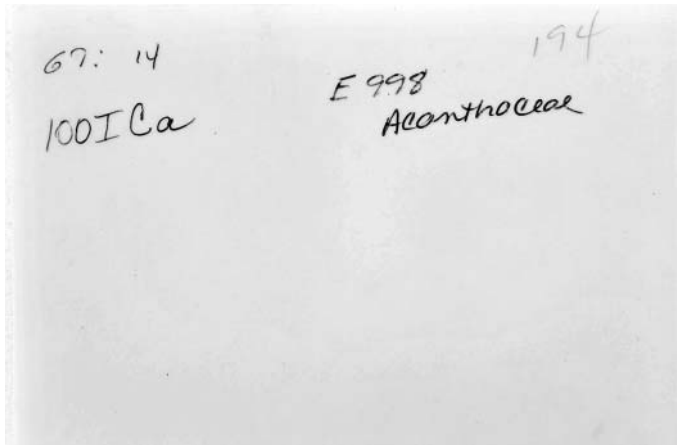
100ICb

(old 100ICa.)

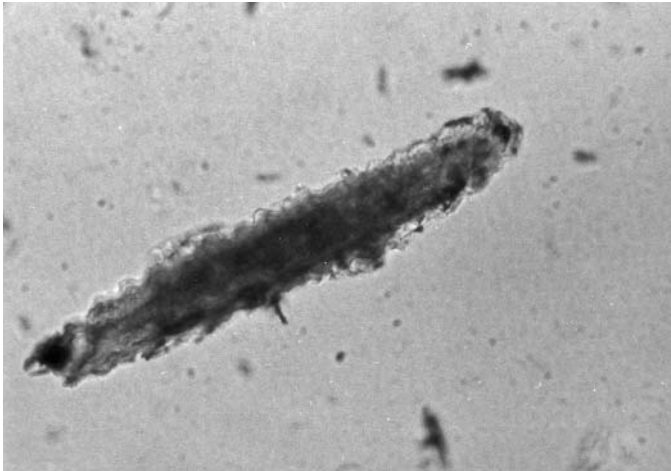
100ICb card 1.JPG



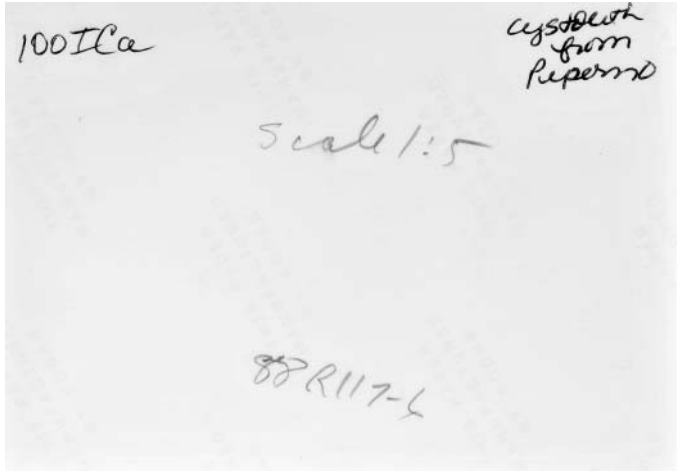
100ICb photo 1f.JPG



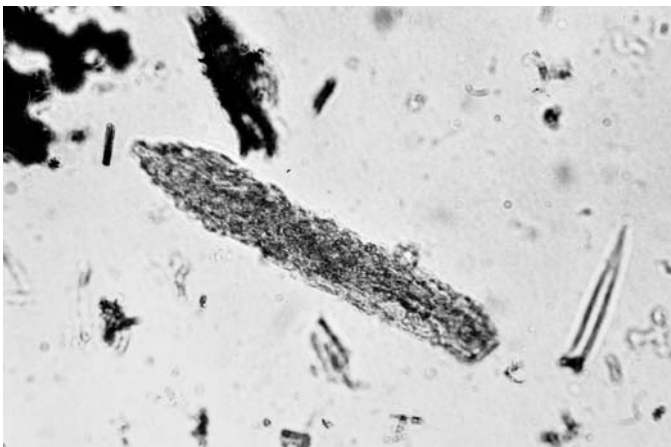
100ICb photo 1b.JPG



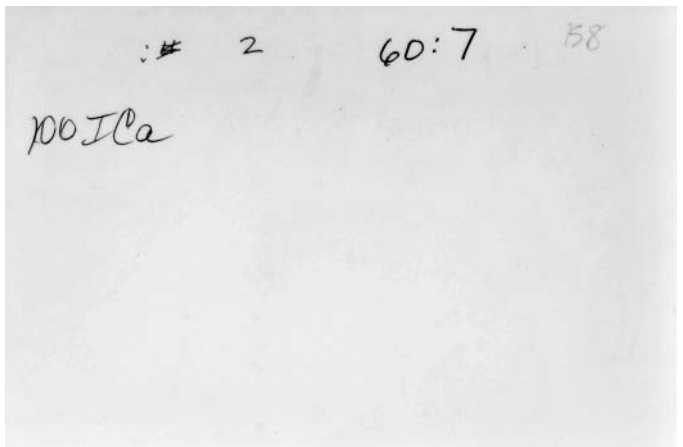
100ICb photo 2f.JPG



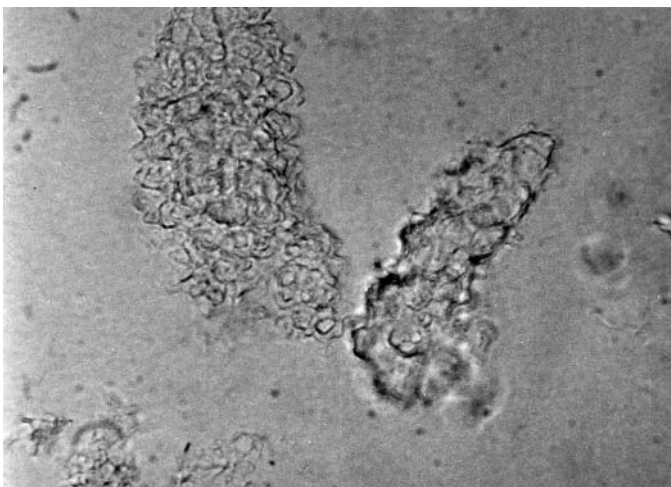
100ICb photo 2b.JPG



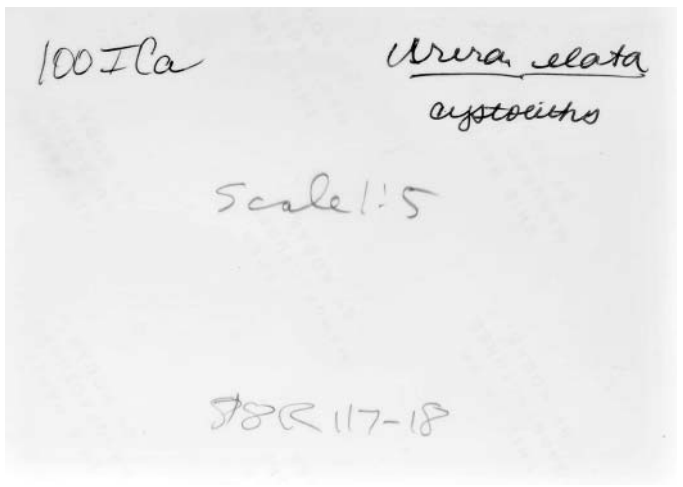
10-0ICb photo 3f.JPG



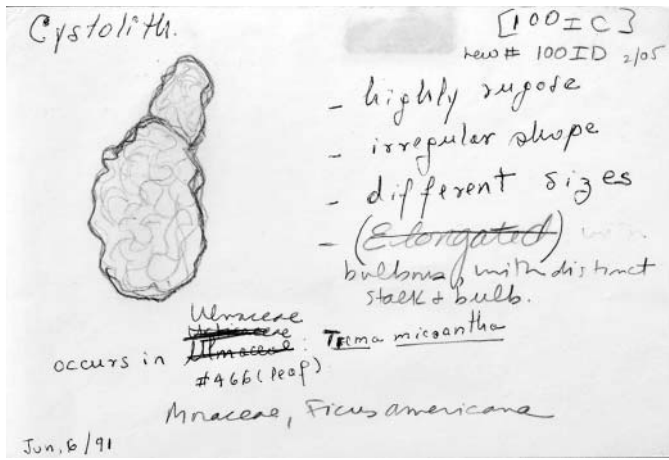
100ICb photo 3b.JPG



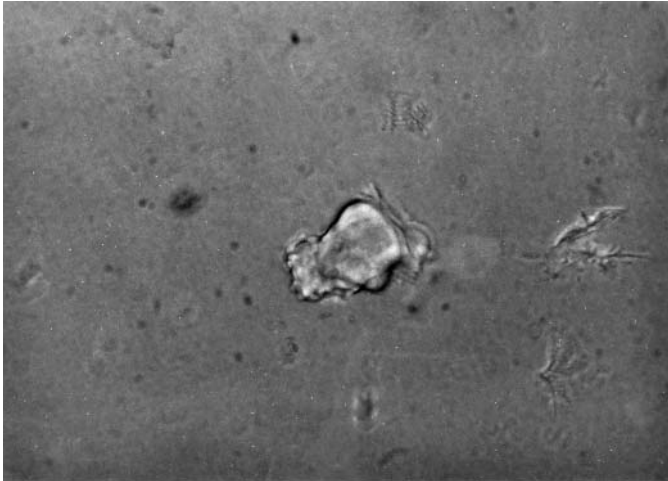
100ICb photo 4f.JPG



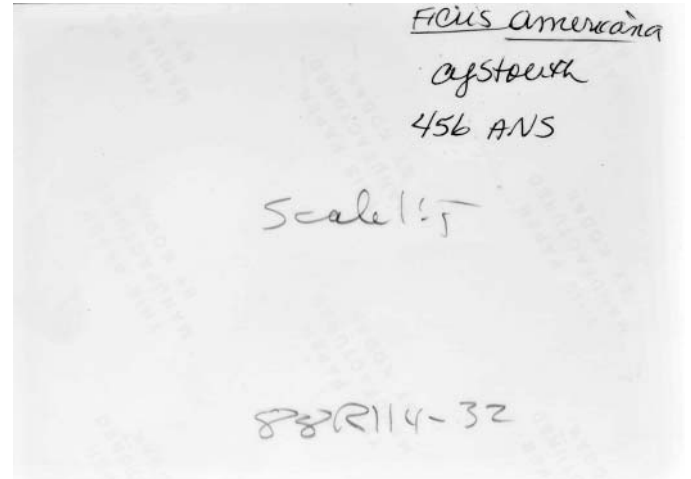
100ICb photo 4b.JPG



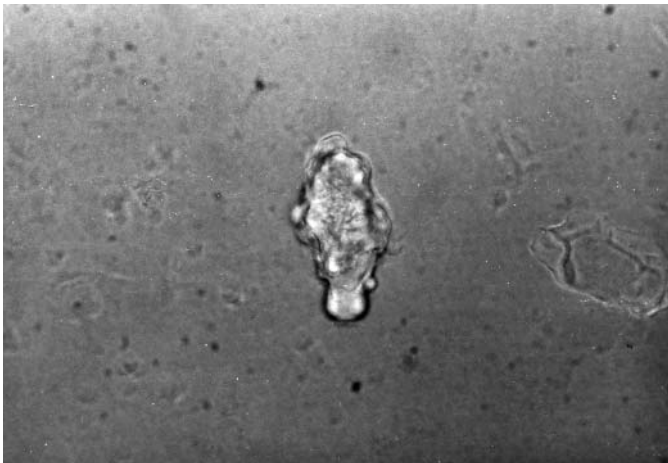
100ID card 1.JPG



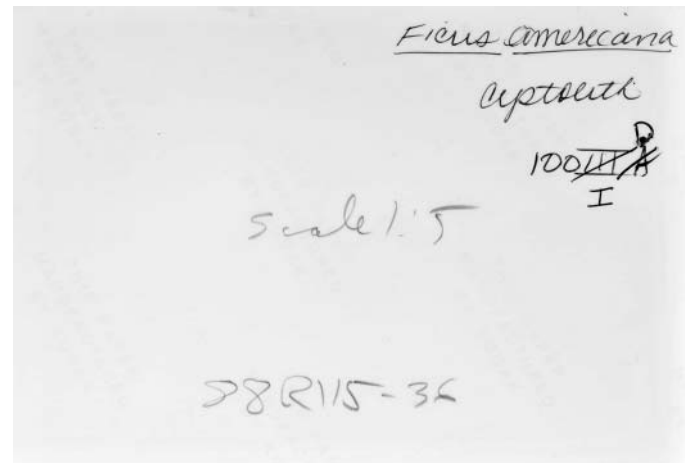
100ID photo 1f.JPG



100ID photo 1b.JPG



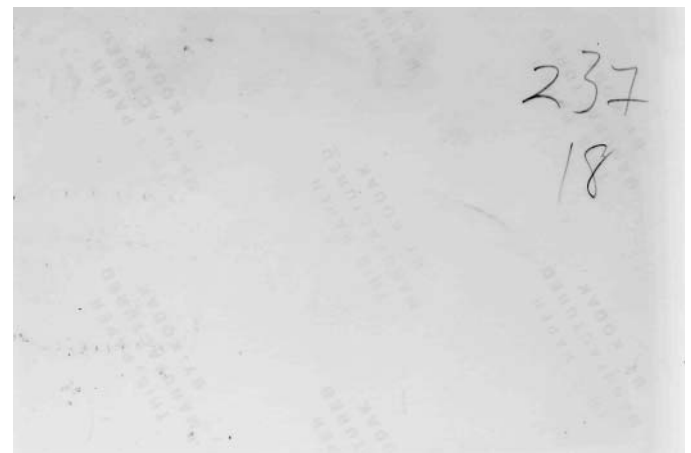
100ID photo 2f.JPG



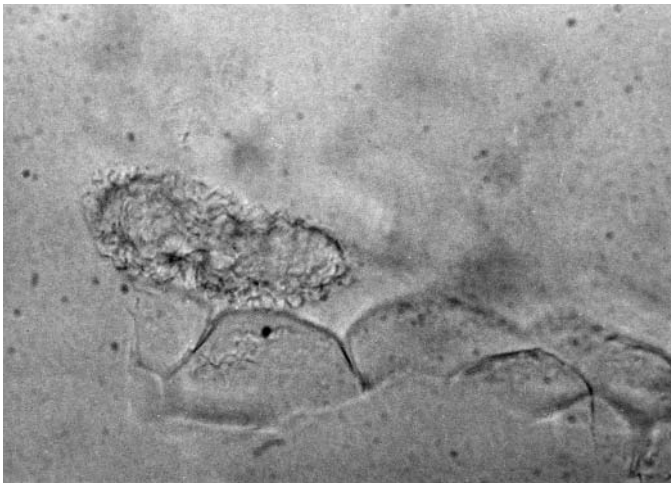
100ID photo 2b.JPG



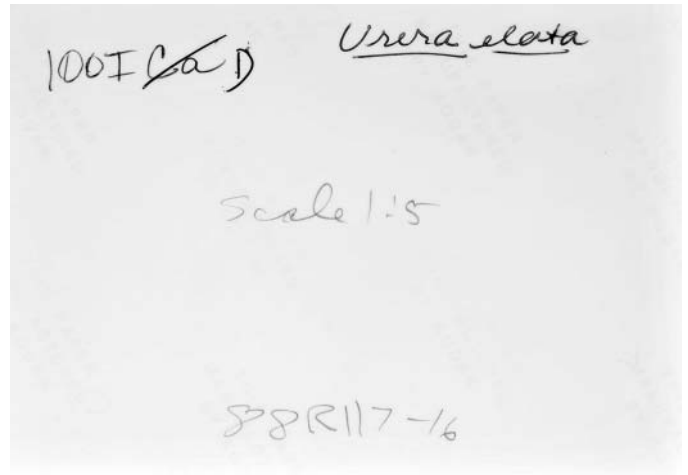
100ID photo 3f.JPG



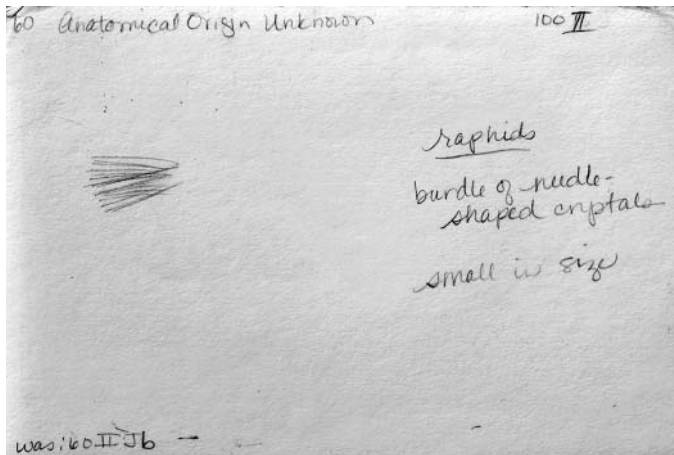
100ID photo 3b.JPG



100ID photo 4f.JPG



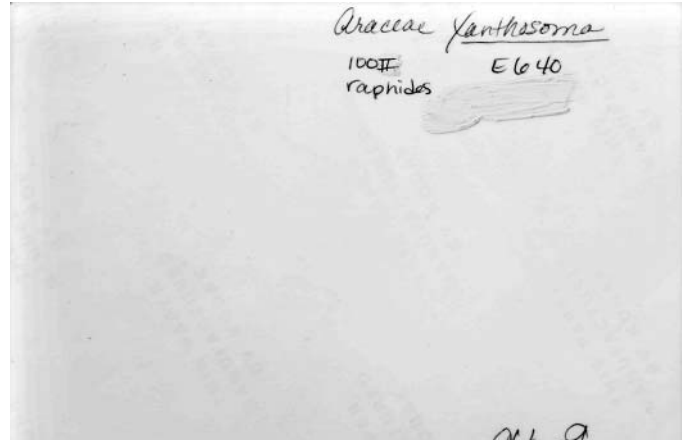
100ID photo 4b.JPG



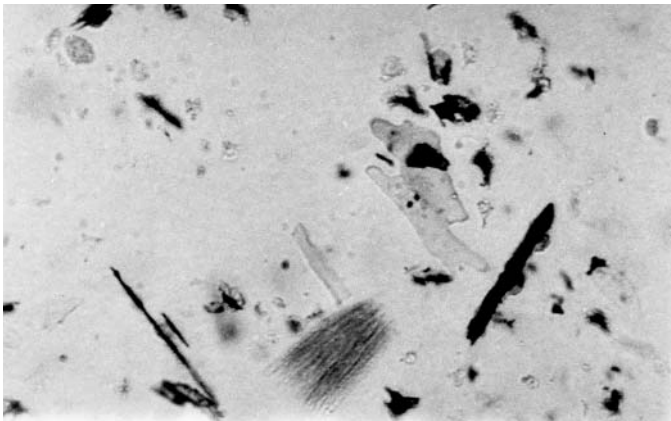
100II card 1.JPG



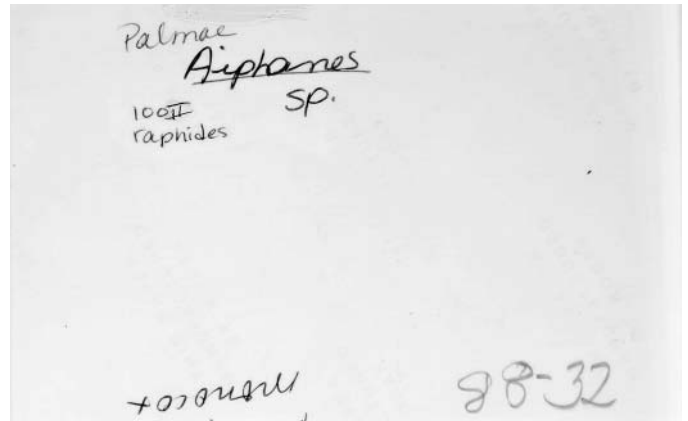
100II photo 1f.JPG



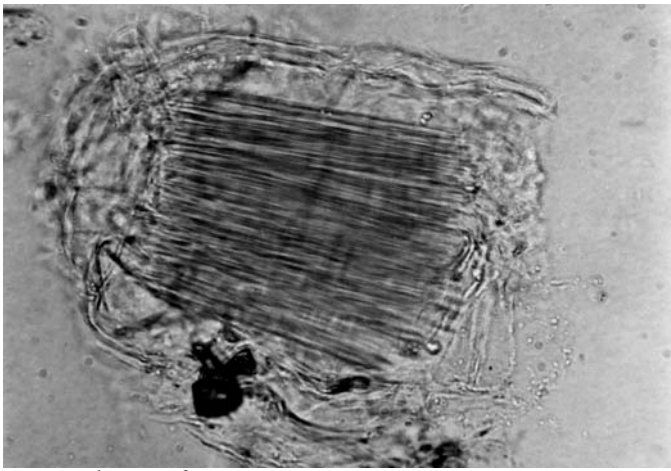
100II photo 1b.JPG



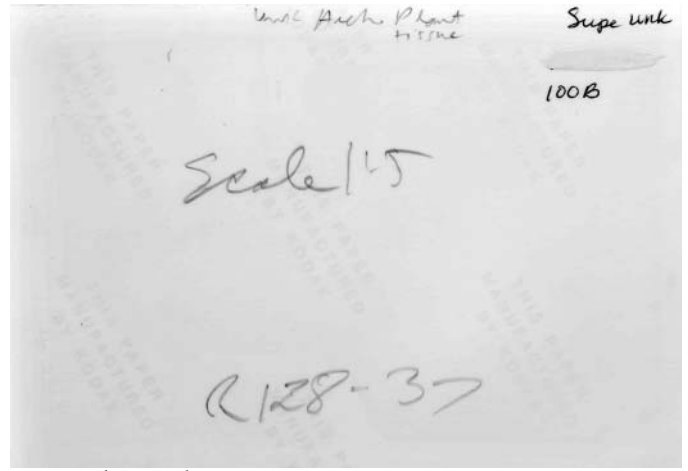
100II photo 2f.JPG



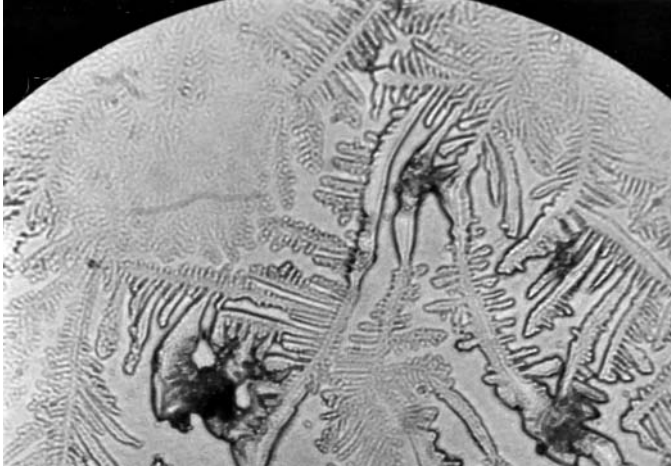
100II photo 2b.JPG



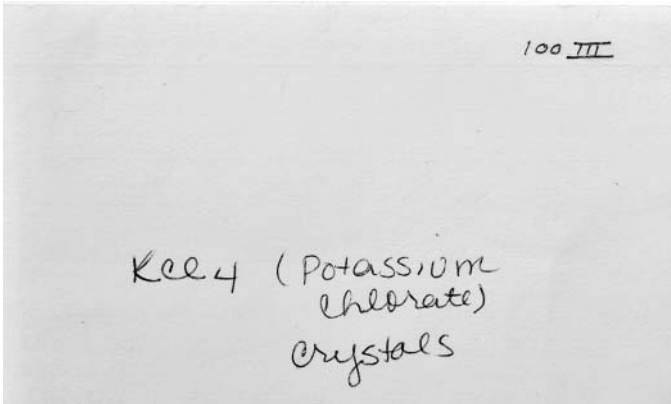
100II photo 3f.JPG



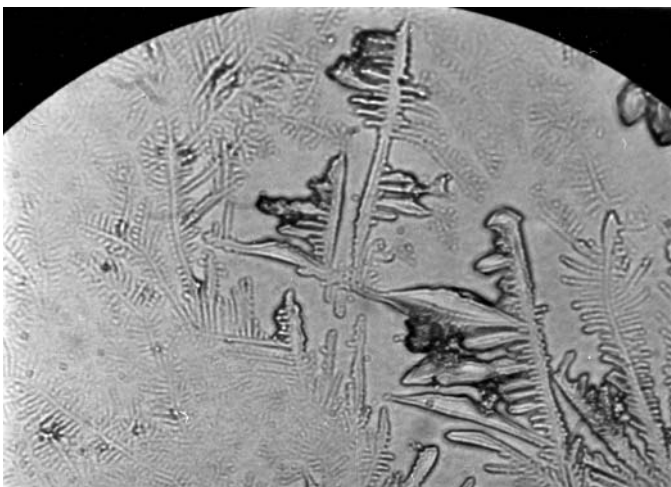
100II photo 3b.JPG



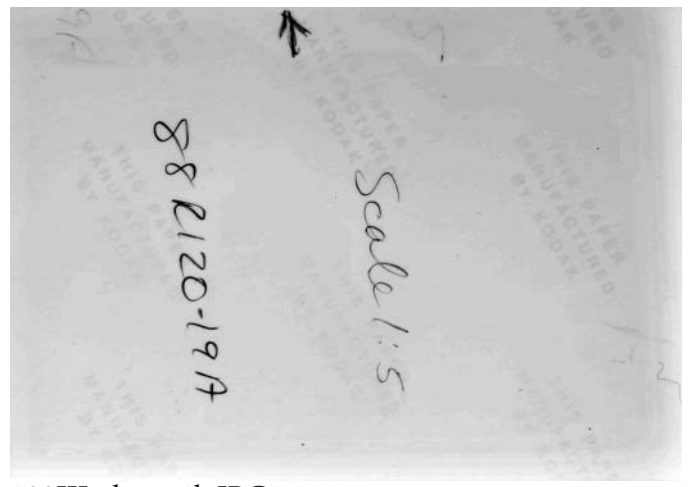
100III photo 1f.JPG



100III card 1.JPG



100III photo 2f.JPG



100III photo 1b.JPG

unk Arch Plant
HITME

Supr unk

100B

Scale 1:5

R128-37

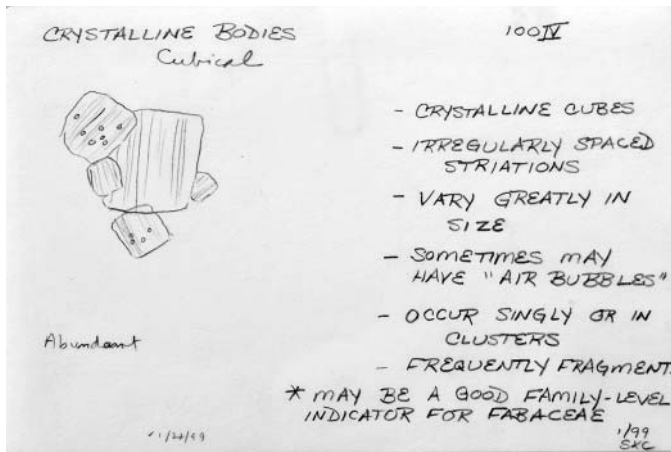
100 III

Kel 4 (Potassium
chlorate)
crystals

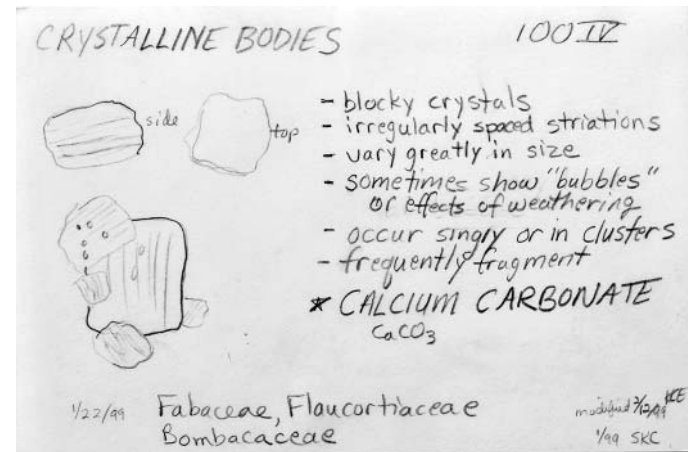


88 R120-19A

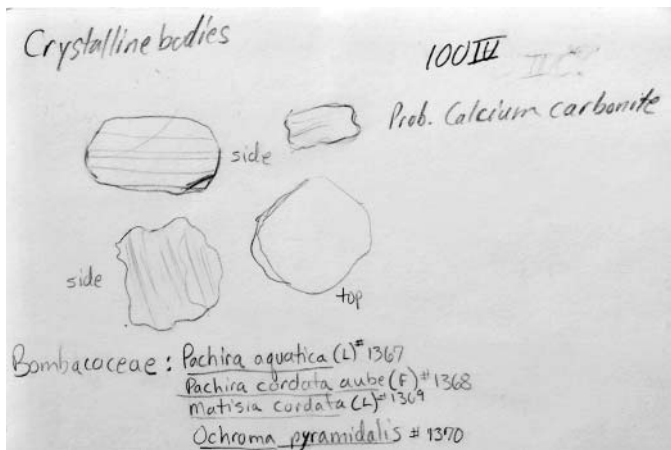
Scale 1:5



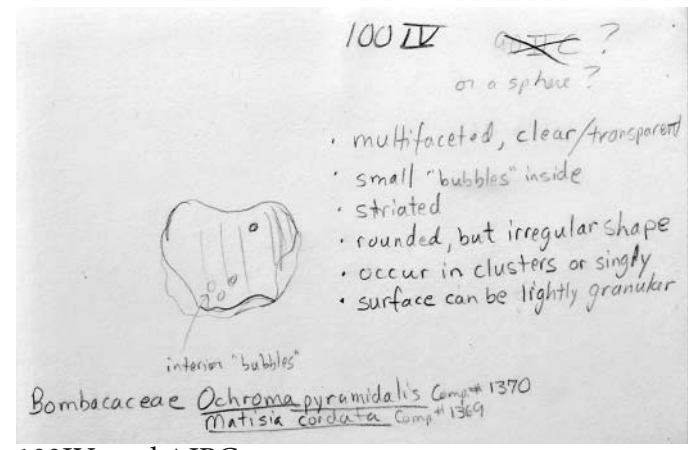
100IV card 1.JPG



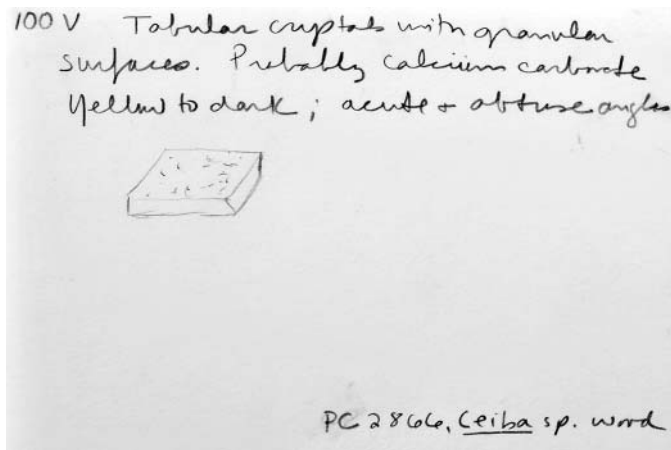
100IV card 2.JPG



100IV card 3.JPG



100IV card 4.JPG



100V card 1.JPG