

CATEGORY 60

Anatomical Origin Unknown

60I. long (two to four times width)

60IA. hair-like, thin

a. short segment

b. long; curled

c. sinuous; irregular

60IB. rectangular body, wider than tall; surface crossed with diagonal ridges or cuts
(Marantaceae, *Calathea maratina*, genus level diagnostic)

60IC. very large (> 45 microns wide, > 80 microns long); irregularly undulating surface
(Ericaceae, *Macleania* sp).*

60ID. "long" cell with long, thin projections attached to base*

60IF. one thin end; one wide end; very wide midsection

60IH. hair-like cell; projections along whole body; grainy surface

60IL. one long body; 3 sinuous edges; one long edge with large conical projections (very unclear)

a. three projections*

b. five projections*

60II. compact

60IIA. long body with sinuous edges, conical projections

60IIB. plate-like cell with inclusions

60IIC. rectilinear shape; concave and convex center rectangles; large regular serrations on long edges

60IID. black body with numerous curvilinear and straight lines

60IIF. rounded to oval

a. bumpy surface/sinuous edges; some have darker center with projection

(Batiolaceae, *Batis maritima*, genus level diagnostic)

b. radiating segments; discernable center

60IIG. bumpy irregular shape; concave projections

a. length four times width

b. other*

60II I. grouped thin bodies

60IIJ. grouped; long, thin bodies

a. not aligned*

b. aligned*

60IIIL. round outline; discernable round center with lines radiating out from center

60IIIM. square outline; brown material

60IIIO. three dimensional; highly sinuous edges*

60IIIR. irregular shape; double outline; uneven surface (Chenopodiaceae, *Chenopodium*,
not used as diagnostic)

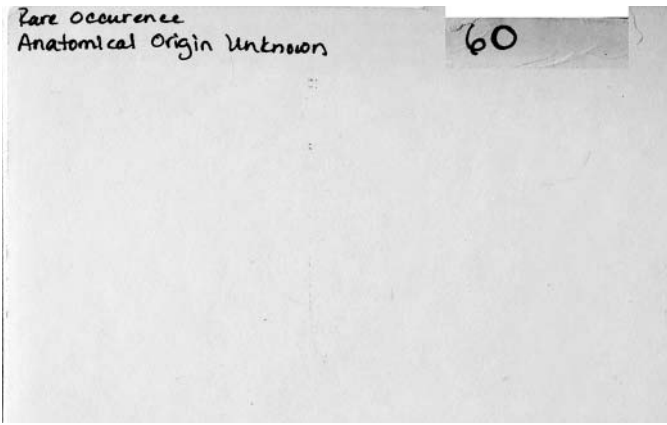
60IIIS. irregular semi-circular shape with large concavity on one side (Hymenophyllaceae,
Trichomanes pinnatum, genus level diagnostic)

60IIY. "C" shape; small; may have lightly silicified material around it
(Burseraceae, Humiriaceae, not used as diagnostic)

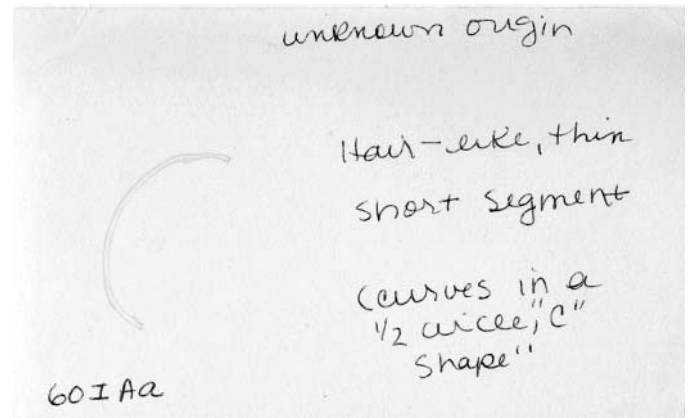
60IIZ. "C" shape; highly silicified concave edge; less silicified area around it
(Burseraceae, *Trattinnickia glaziovii*, not used as diagnostic)

60III. large three dimensional blocky bodies; polyhedral in outline
(Chloranthaceae, *Hedyosum guaduatatum*, family level diagnostic)

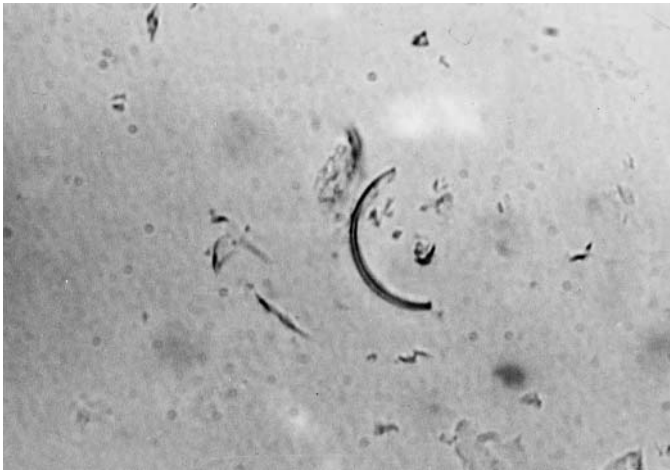
*No card in MU card file



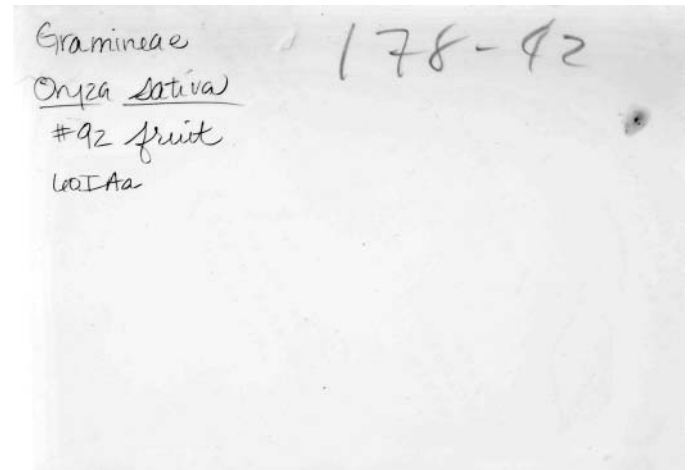
60 card 1.JPG



60IAa card 1.JPG



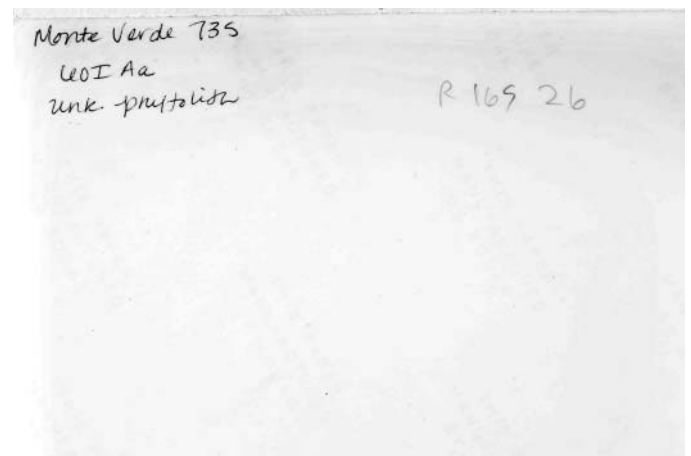
60IAa photo 1f.JPG



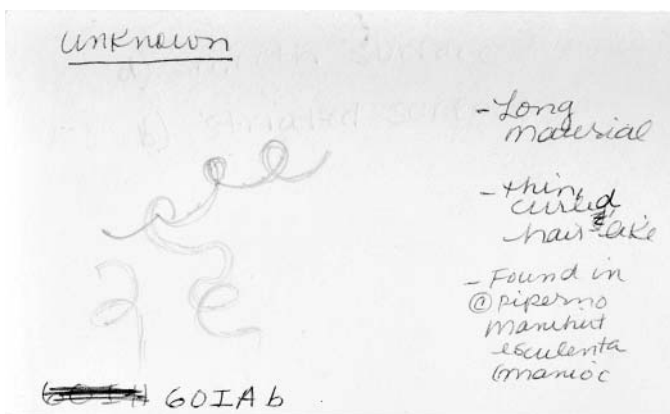
60IAa photo 1b.JPG



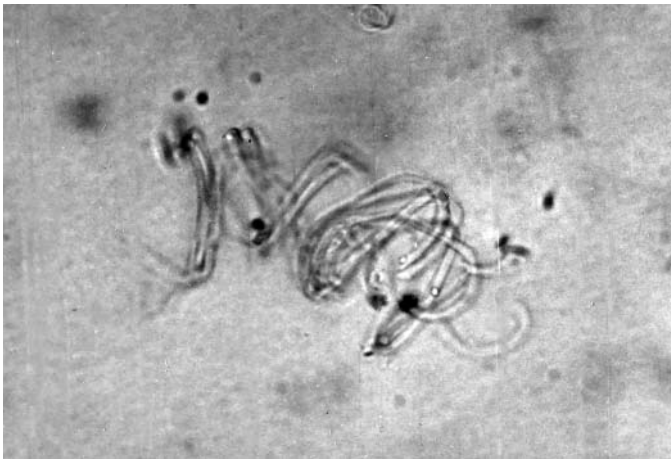
60IAa photo 2f.JPG



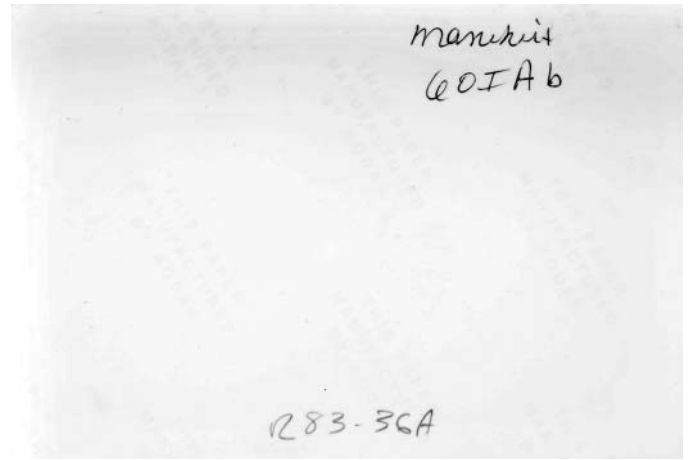
60IAa photo 2b.JPG



60IAb card 1.JPG



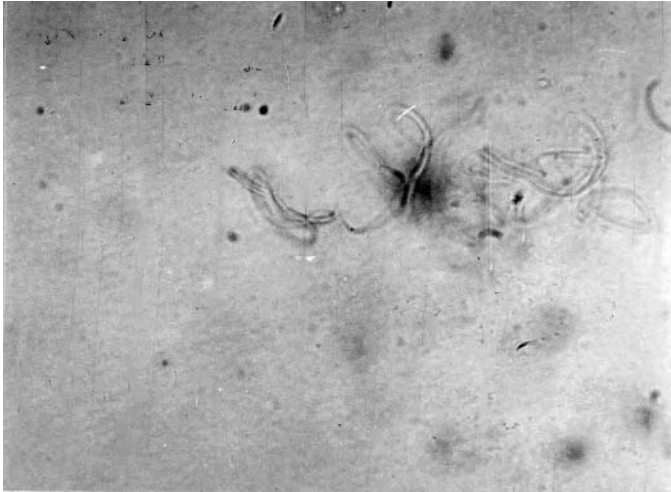
60IAb photo 1f.JPG



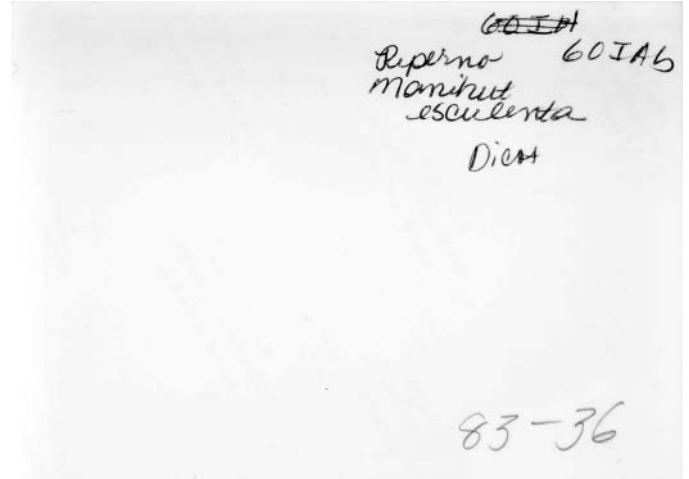
60IAb photo 1b.JPG

manikut
60IAb

1283-36A



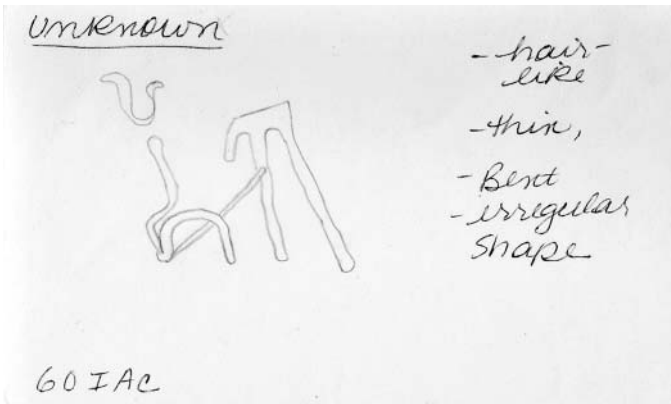
60IAb photo 2f.JPG



60IAb photo 2b.JPG

~~60IAb~~
Ruperto 60IAb
manikut
esculenta
Dicot

83-36

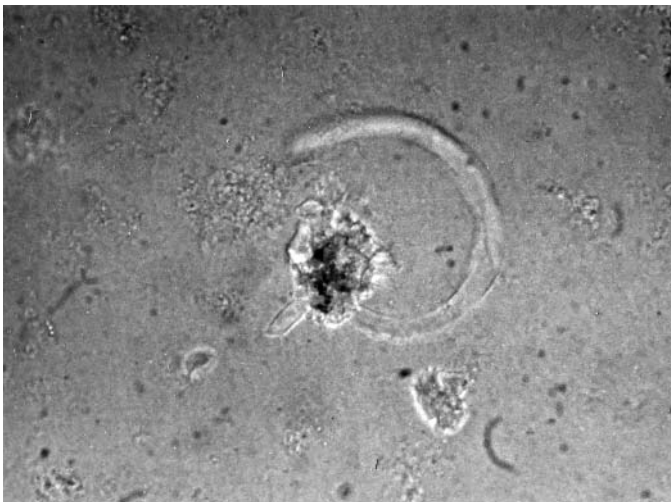


Unknown

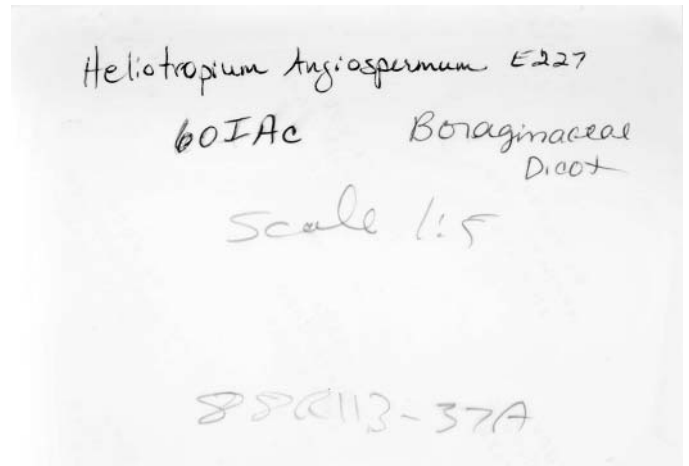
- hair-like
- thin,
- Bent
- irregular shape

60IAc

60IAc card 1.JPG



60IAc photo 1f.JPG

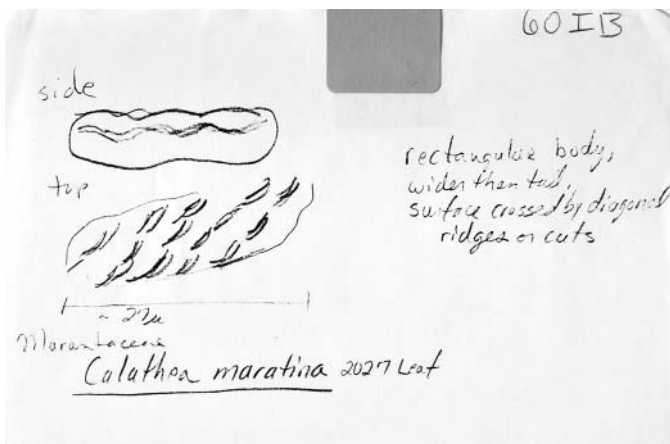


60IAc photo 1b.JPG

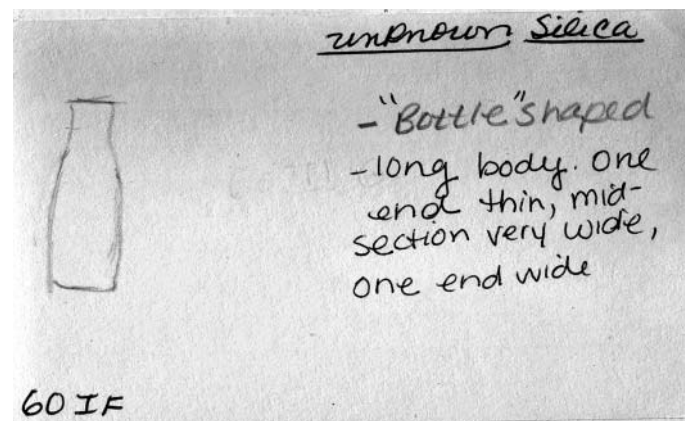
Heliotropium angiospermum E227
60IAc Boraginaceae
Dicot

Scale 1:5

850113-37A



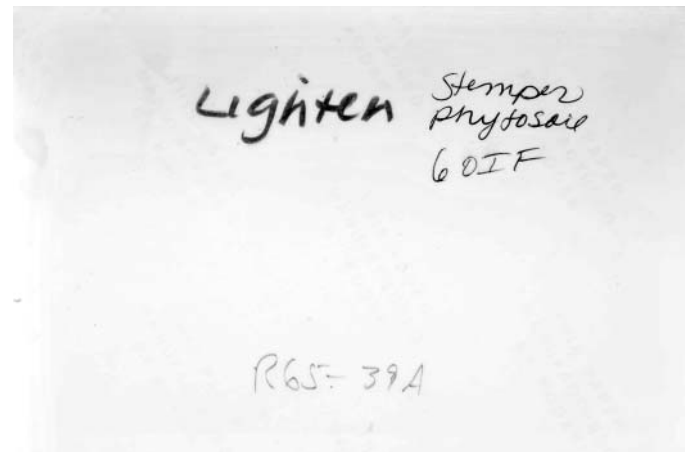
60Ib card 1.JPG



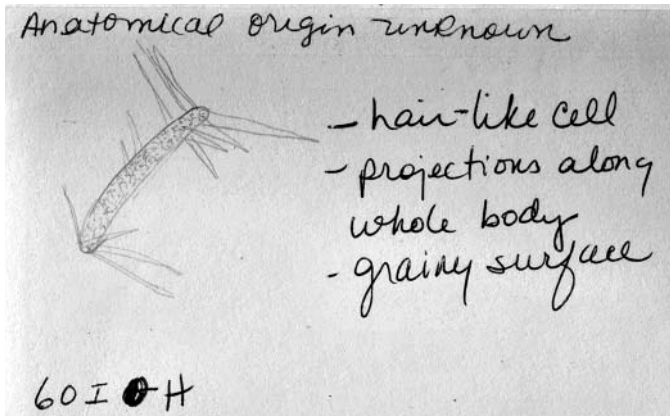
60IF card 1.JPG



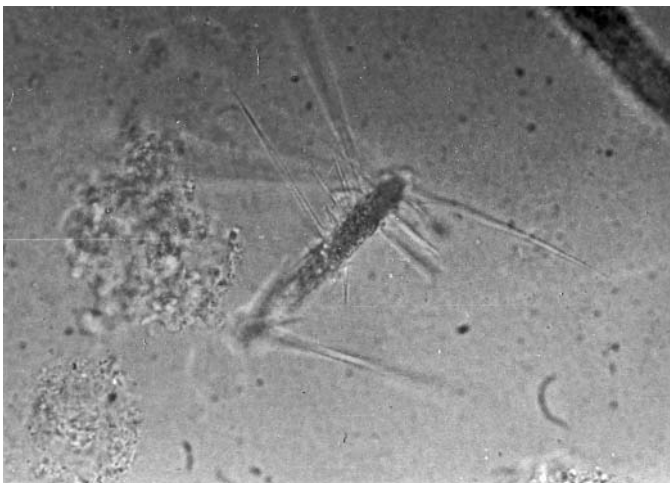
60IF photo 1f.JPG



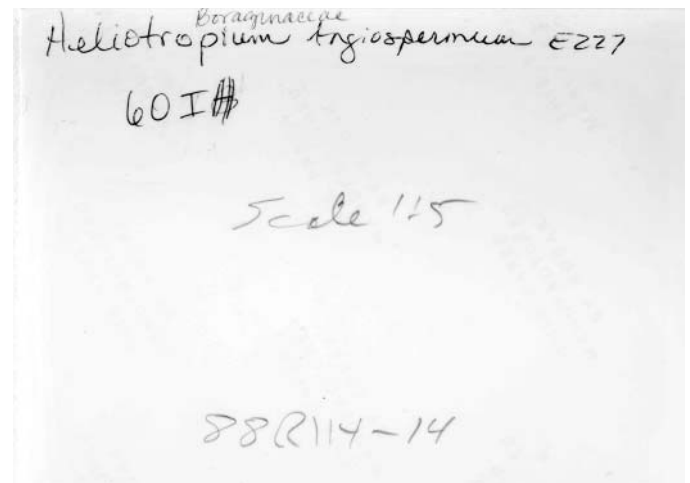
60IF photo 1b.JPG



60IH card 1.JPG



60IH photo 1f.JPG



60IH photo 1b.JPG




60IH photo 2f.JPG

Boraginaceae
 Dicot
 Heliotropium angiospermum E227
 60IH
 Scale 1/5
 88R113-36A

60IH photo 2b.JPG

Anatomical origin unknown
 Rare occurrence



- Long material
 long body w/
 sinuous edges
 one long edge
 has (3) large
 conical projections

- pro diat epidermal
 n seed epidermal

60IIA

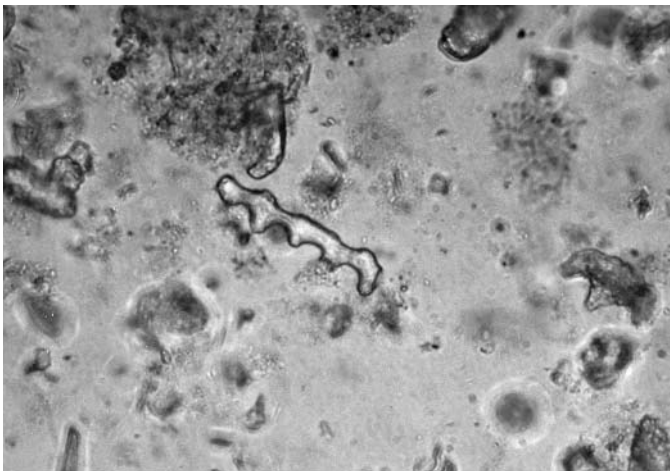
60IIA card 1.JPG



60IIA photo 1f.JPG

Ⓟ 6430
 60IIA
 Scale 1/5
 88R123-33A

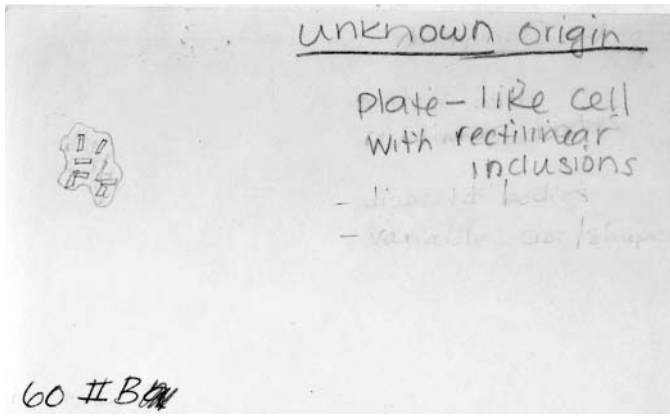
60IIA photo 1b.JPG



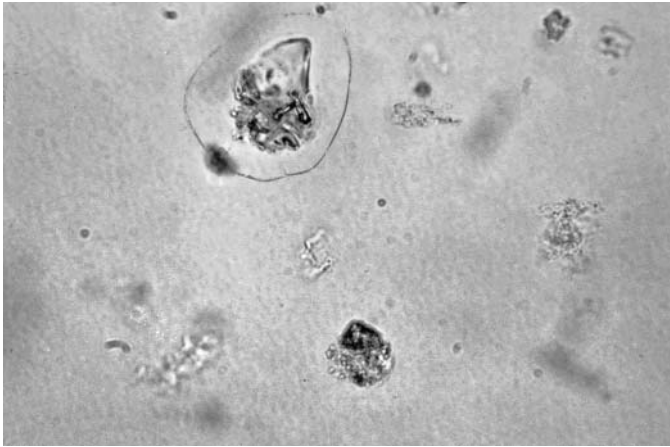
60IIA photo 2f.JPG

60IIIA
 Phyto. 624
 Scale 1/5
 88R120-34A

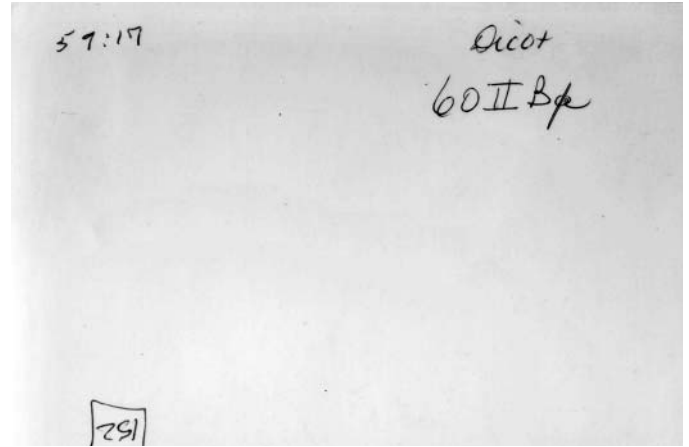
60IIA photo 2b.JPG



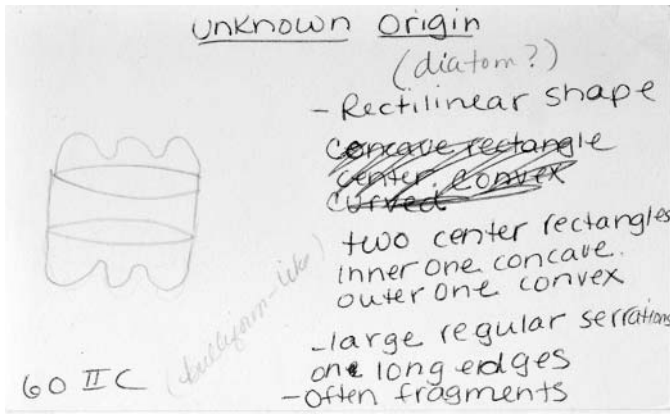
60 # B
60IIB card 1.JPG



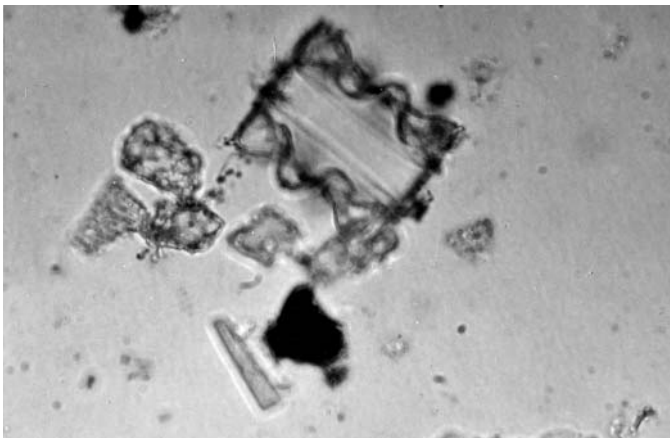
60IIB photo 1f.JPG



60IIB photo 1b.JPG



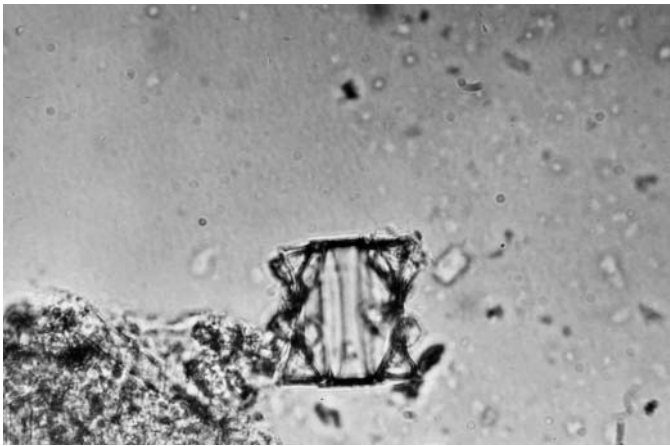
60IIC card 1.JPG



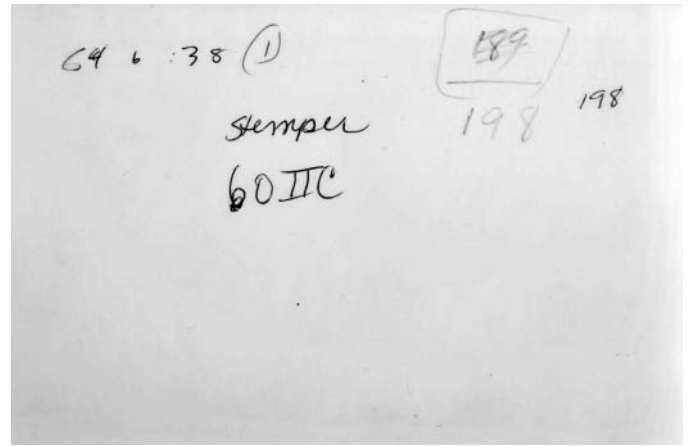
60IIC photo 1f.JPG



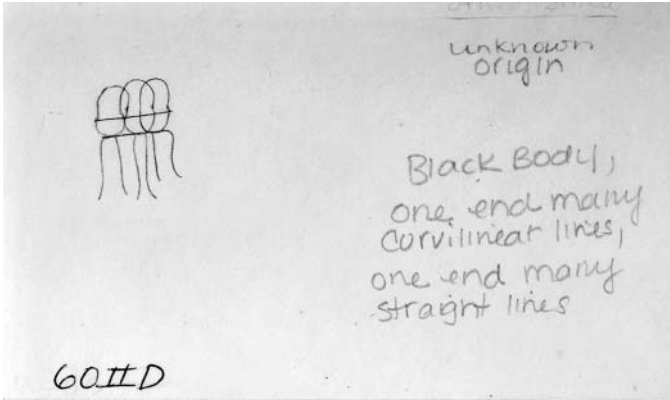
60IIC photo 1b.JPG



60IIC photo 2f.JPG



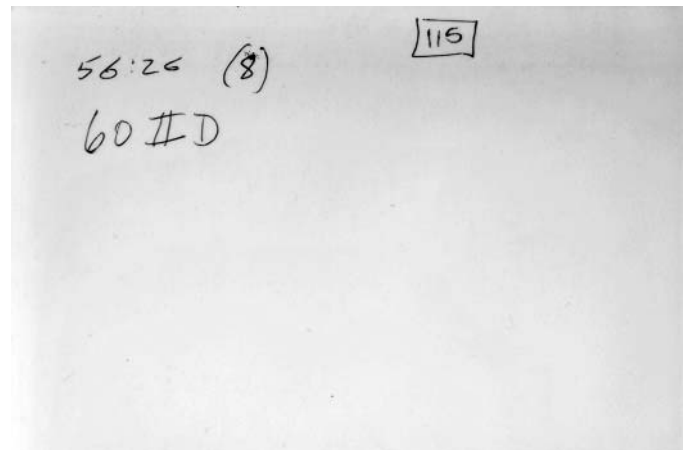
60IIC photo 2b.JPG



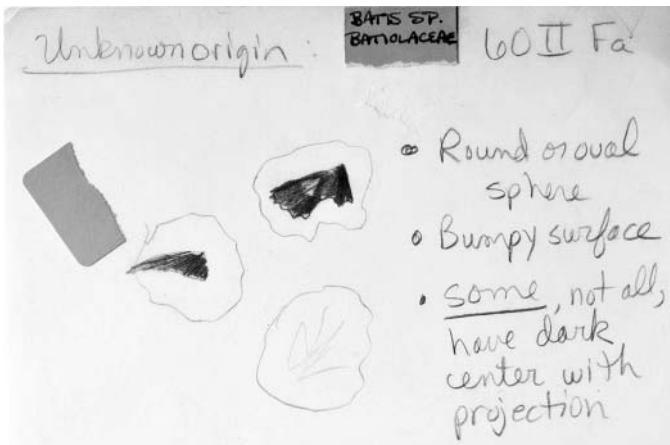
60IID card 1.JPG



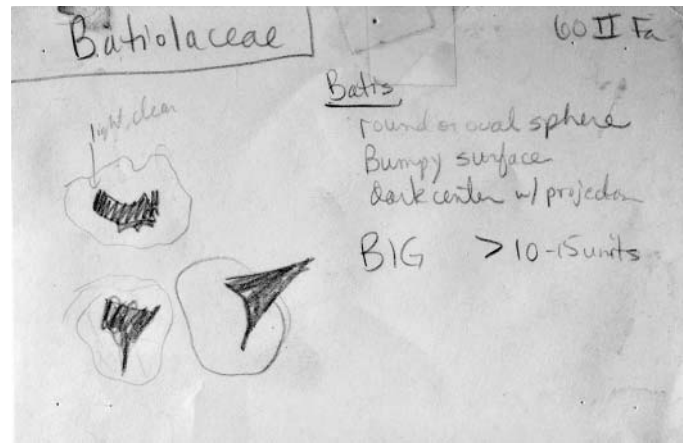
60IID photo 1f.JPG



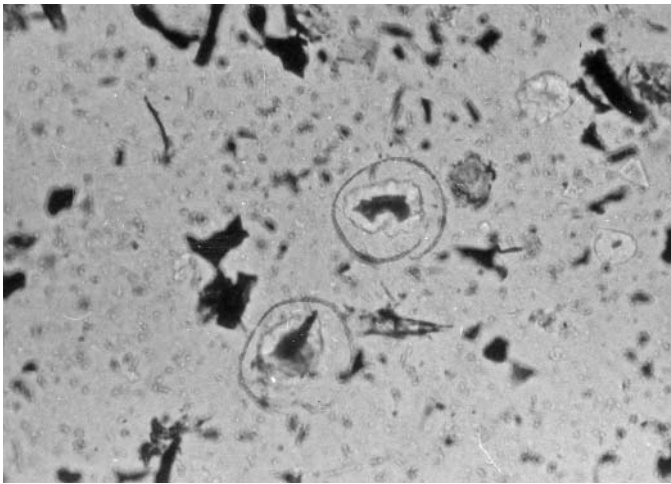
60IID photo 1b.JPG



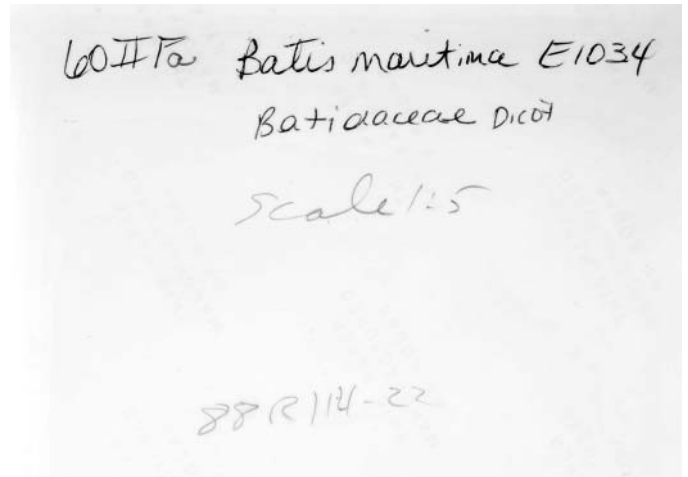
60IIFa card 1.JPG



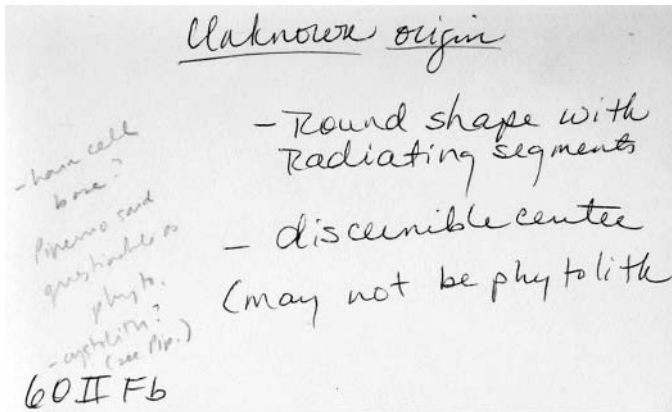
60IIFa card 2.JPG



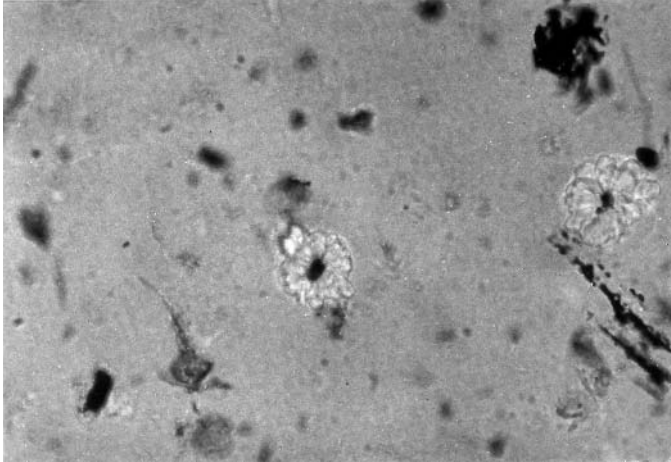
60IIFa photo 1f.JPG



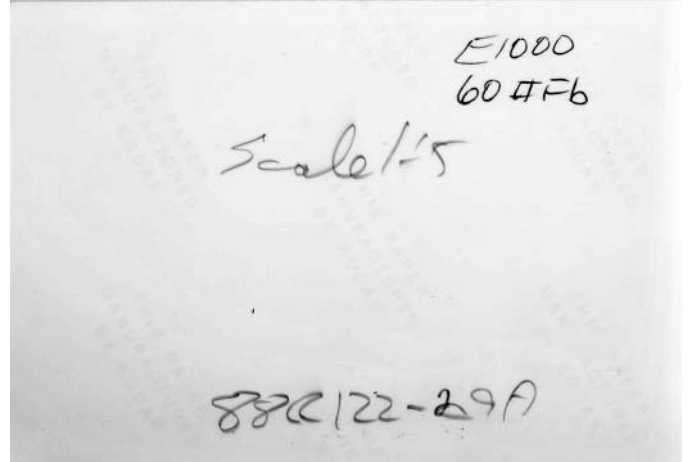
60IIFa photo 1b.JPG



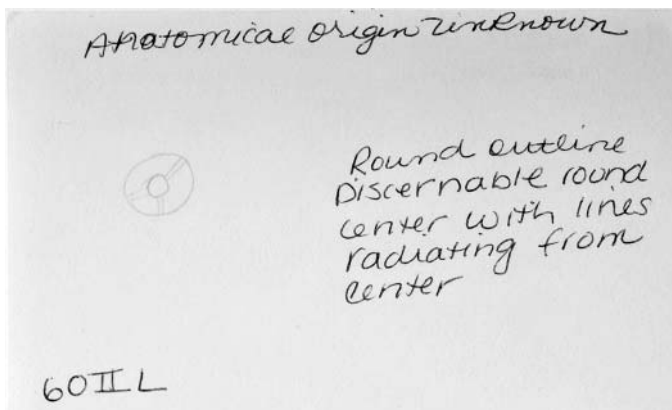
60IIFb card 1.JPG



60IIFb photo 1f.JPG



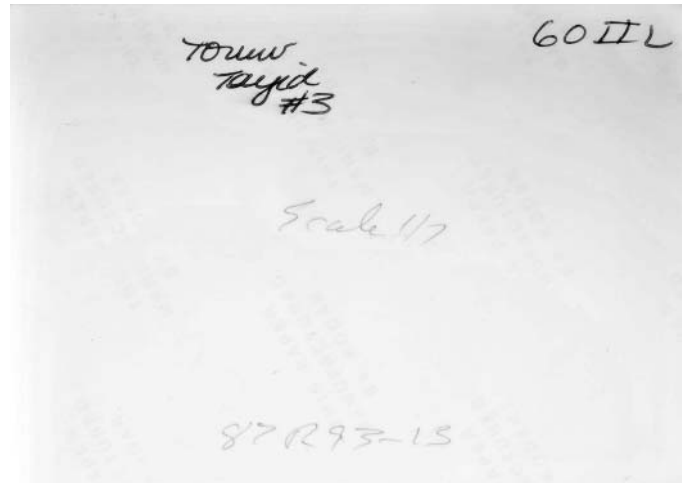
60IIFb photo 1b.JPG



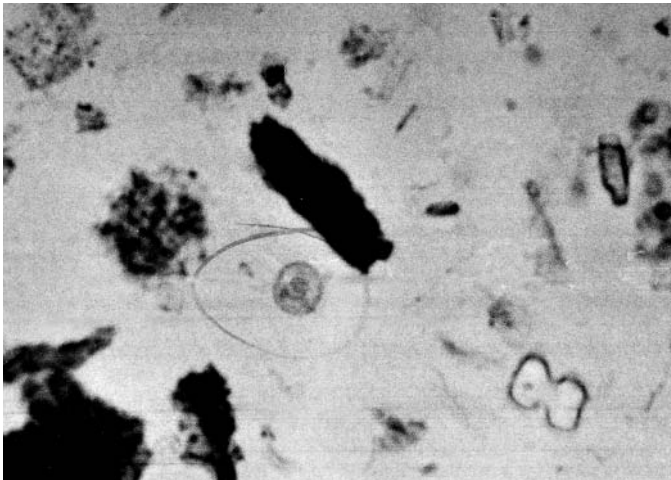
60IIL card 1.JPG



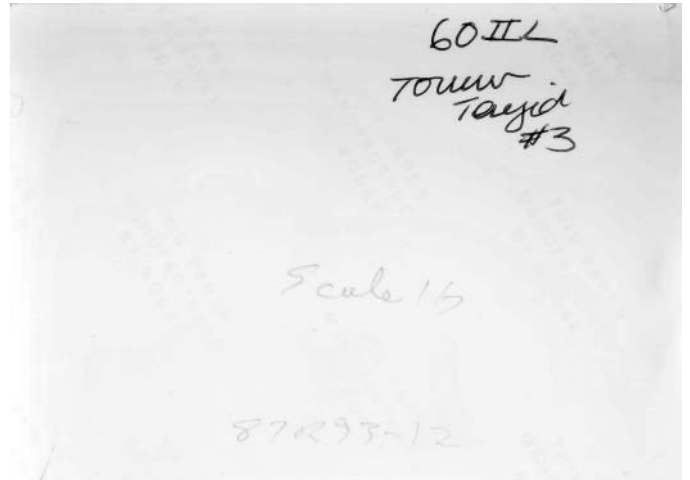
60IIL photo 1f.JPG



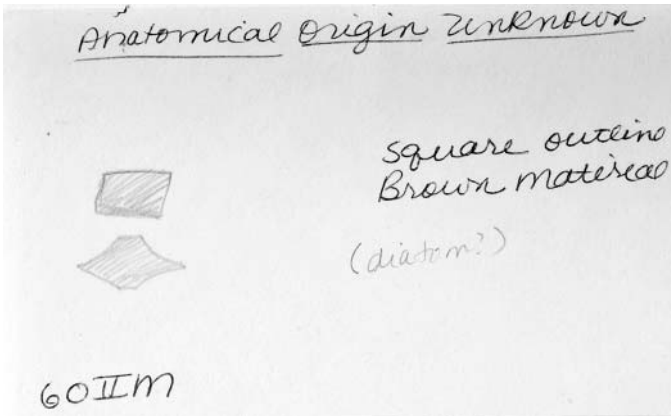
60IIL photo 1b.JPG



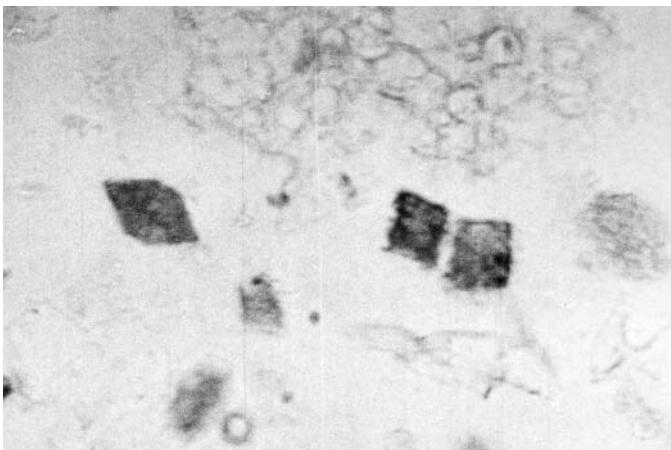
60IIL photo 2f.JPG



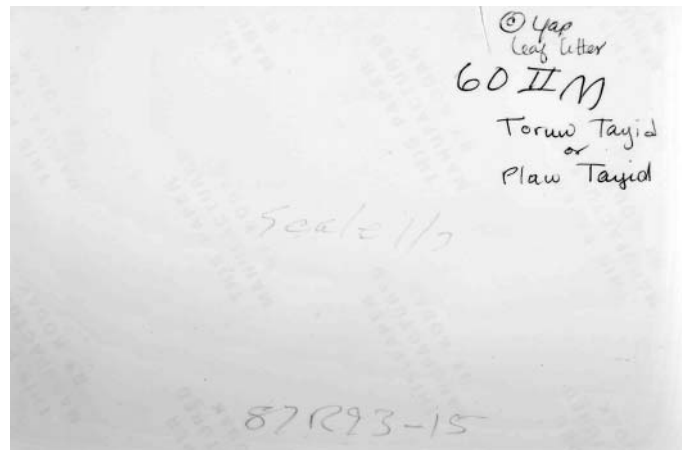
60IIL photo 2b.JPG



60IIM card 1.JPG




60IIM photo 1f.JPG



60IIM photo 1b.JPG

Anatomical Origin Unknown

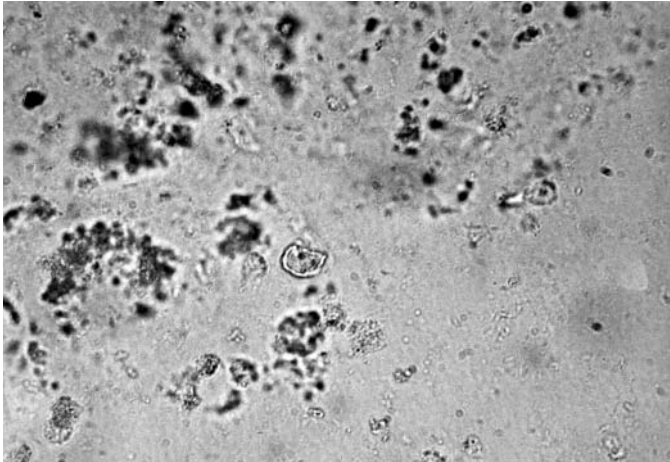


- irregular shape,
- double outline
- uneven surface

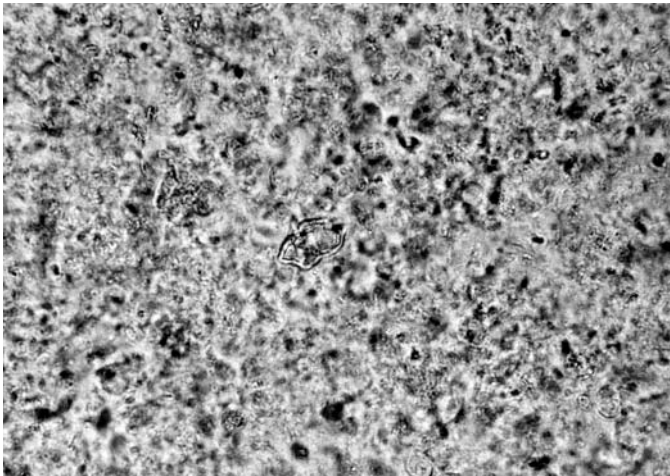
(probably small)

60IR

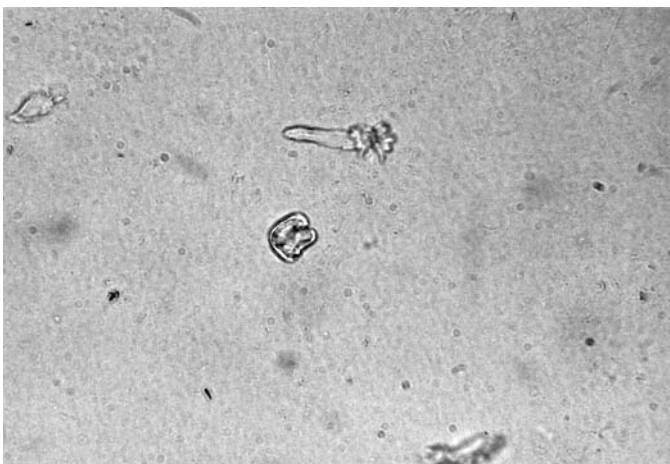
60IIR card 1.JPG



60IIR photo 1f.JPG



60IIR photo 2f.JPG



60IIR photo 3f.JPG

Chenopodiaceae
Chenopodium Comp 617
60IR
Scale 1:5

88R120-26A

60IIR photo 1b.JPG

Chenopodiaceae
Chenopodium Comp 617
60IR
Scale 1:5

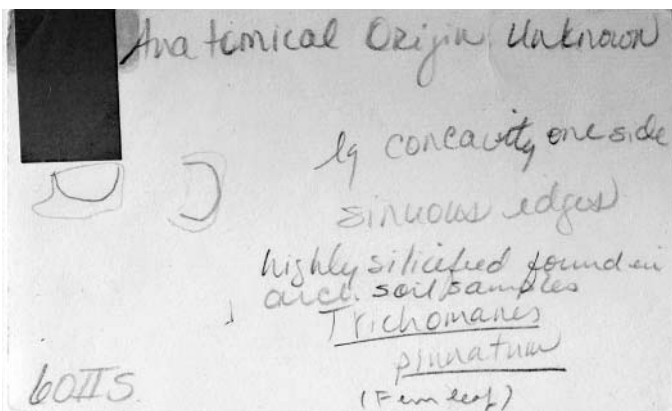
88R120-28A

60IIR photo 2b.JPG

Chenopodiaceae
Chenopodium Comp 617
60IR
Scale 1:5

88R120-27A

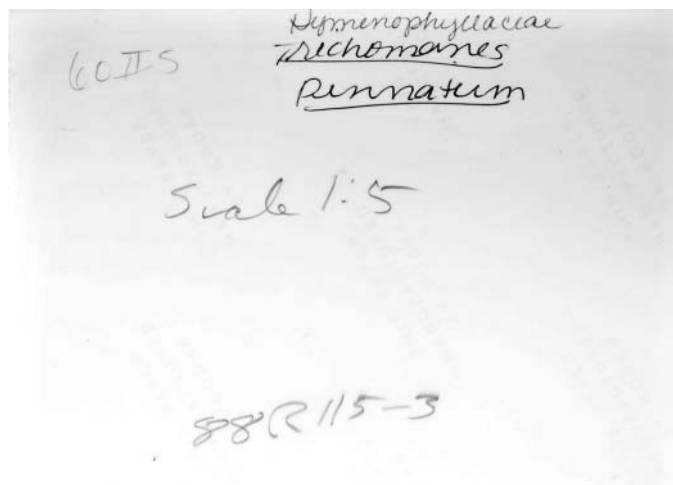
60IIR photo 3b.JPG



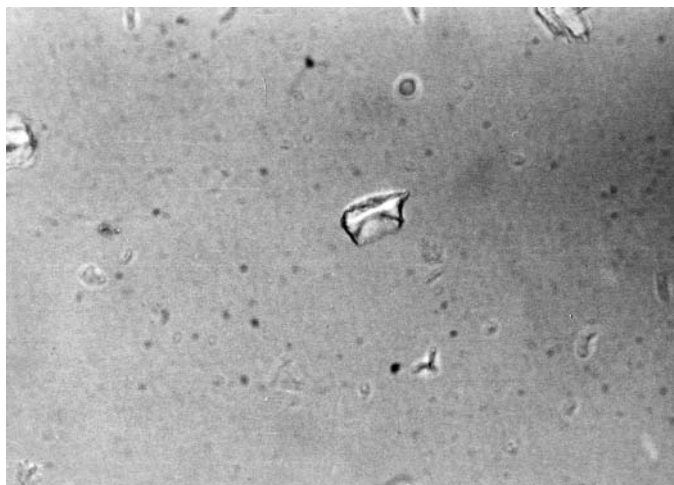
60IIS; card 1.JPG



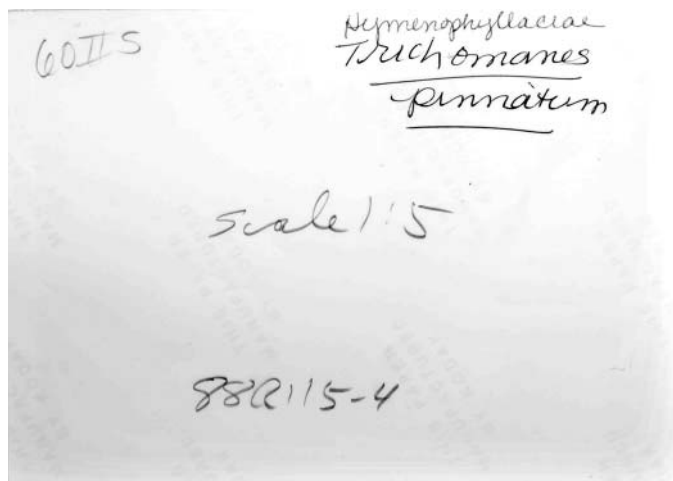
60IIS photo 1f.JPG



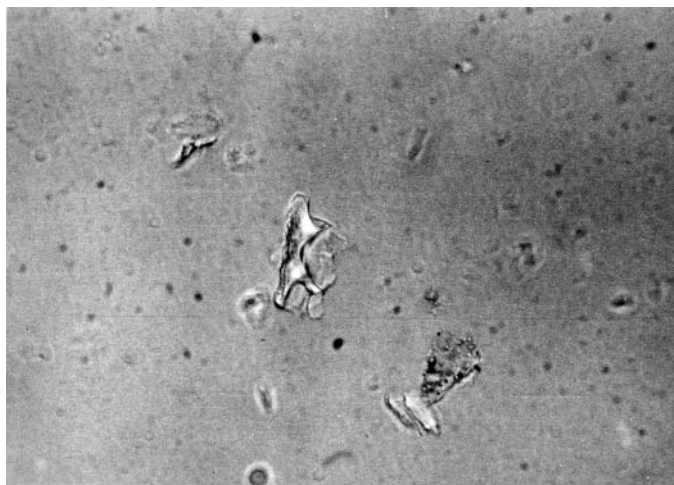
60IIS photo 1b.JPG



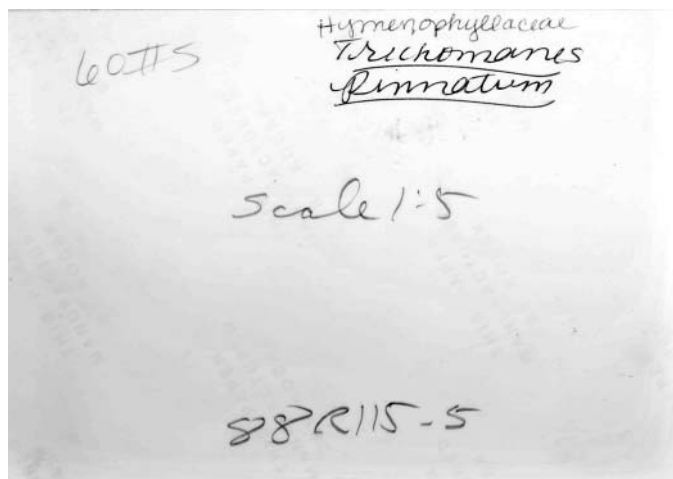
60IIS photo 2f.JPG



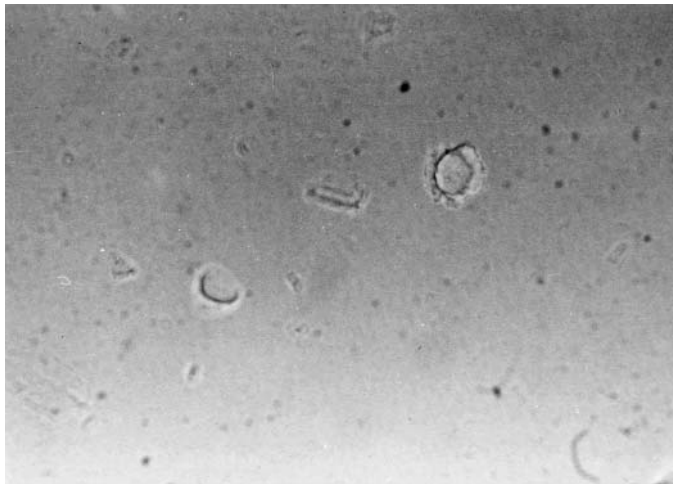
60IIS photo 2b.JPG



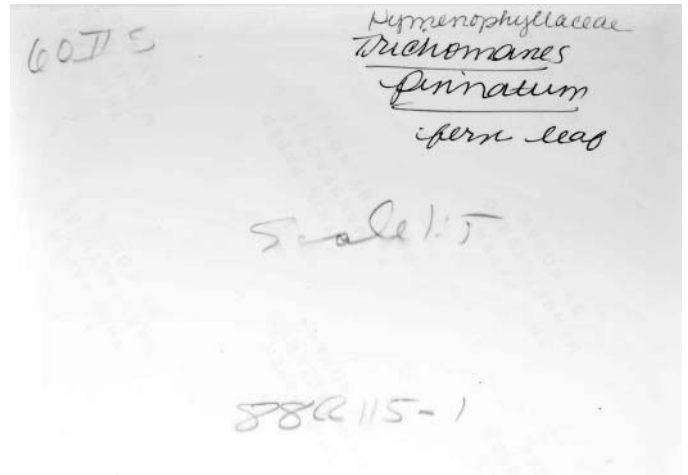
60IIS photo 3f.JPG



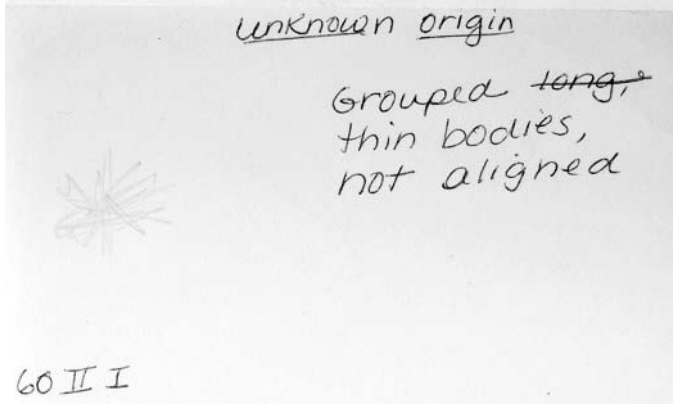
60IIS photo 3b.JPG



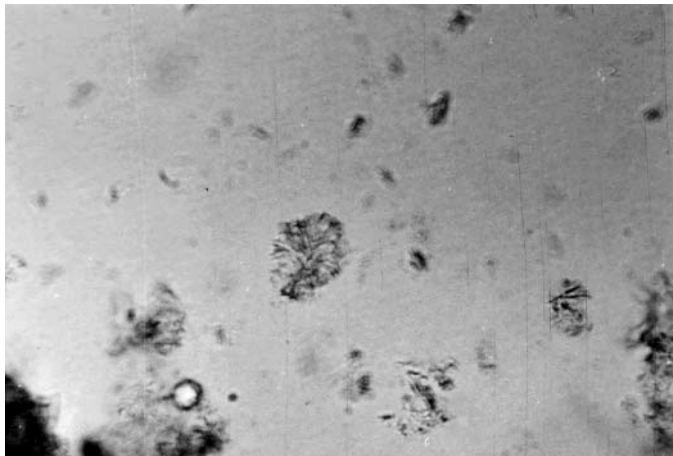
60IIS photo 4f.JPG



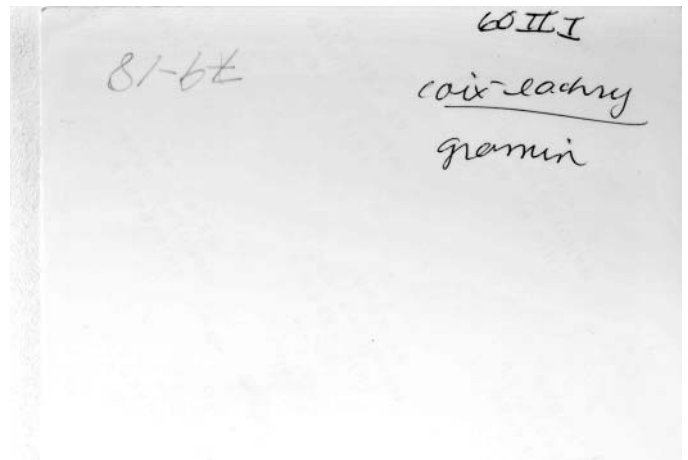
60IIS photo 4b.JPG



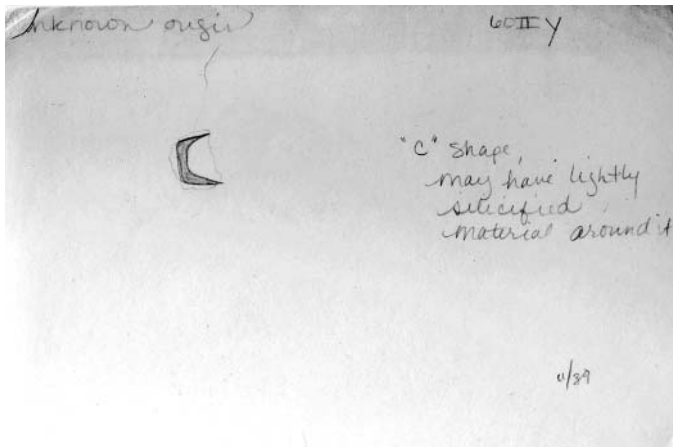
60II I card 1 .JPG



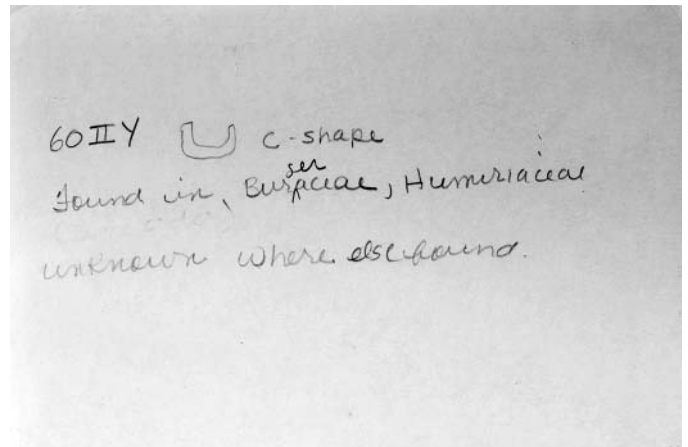
60II I photo 1f.JPG



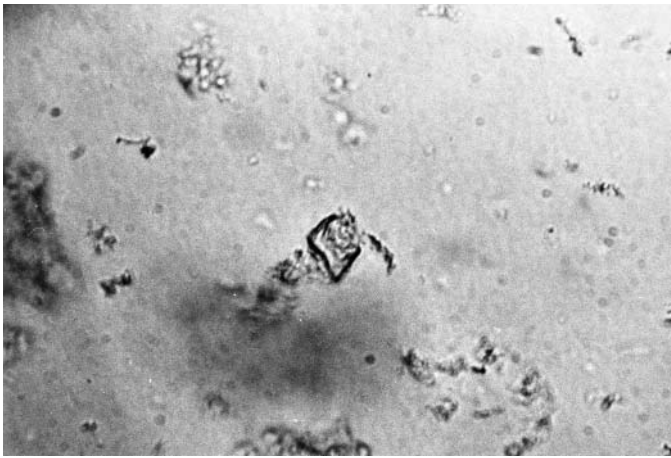
60II I photo 1b.JPG



60II Y card 1.JPG



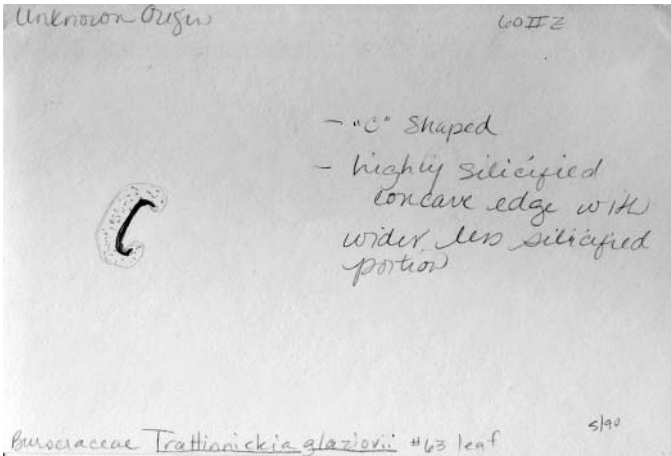
60II Y card 2.JPG



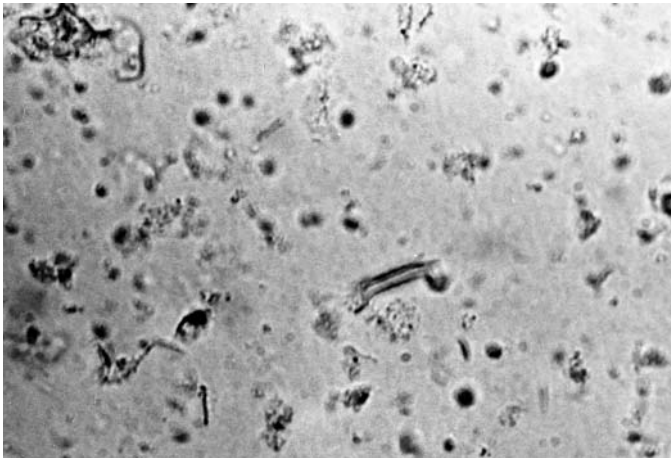
60I1Y photo 1f.JPG

Burseraceae
Trattinnickia glaziovii R163 40
 #63 leaf
 60I1Y

60I1Y photo 1b.JPG



60I1Z card 1.JPG



60I1Z photo 1f.JPG

Burseraceae
Trattinnickia glaziovii
 #63 leaf R163 38
 60I1Z
 "C"-shaped body (w rotation)

60I1Z photo 1b.JPG