

CATEGORY 31

Intercostal Cells

31I. quadrilateral

31IA. serrated edge

a. square

b. rectangular

c. with regular indentations*

31II. rounded

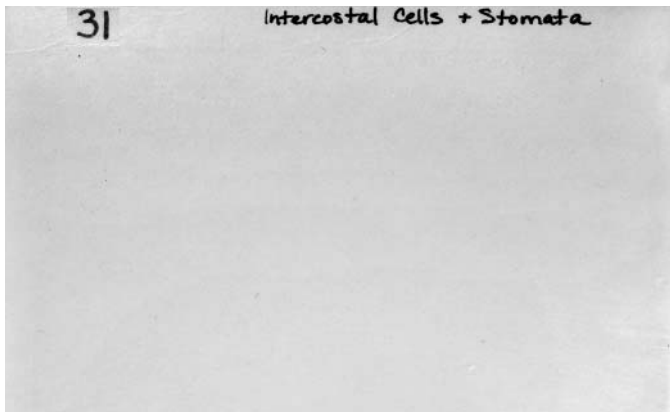
31IIA. round

31IIB. oval

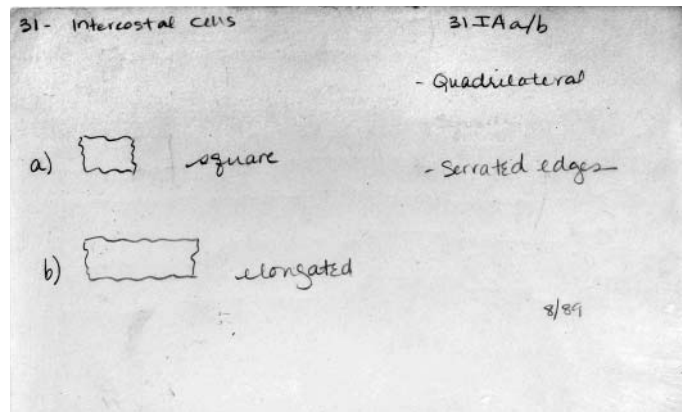
31IIC. irregularly rounded

[Stomata: see category 120]

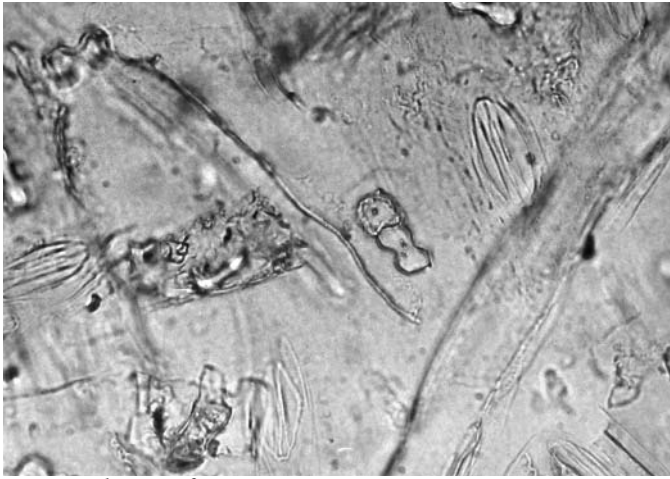
*No card in MU card file



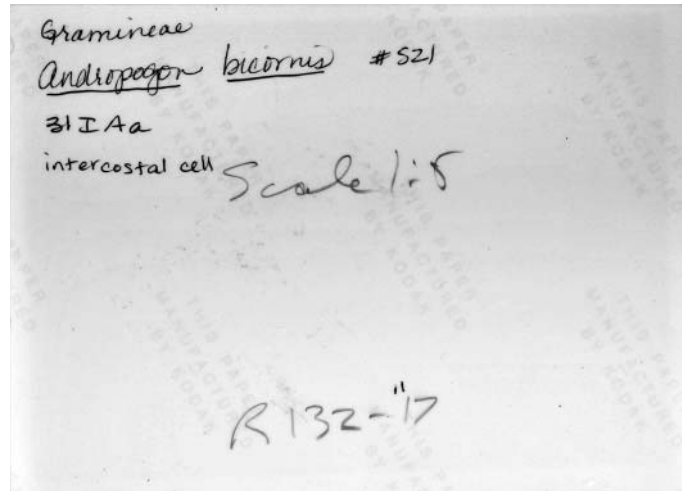
31 caard 1.JPG



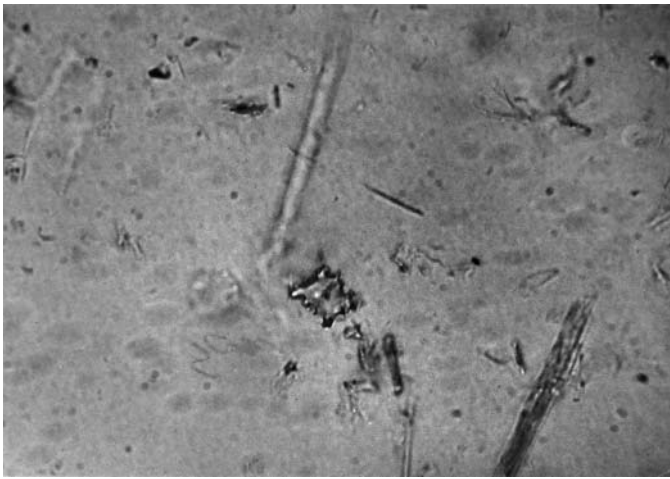
31IAa,b card 1.JPG



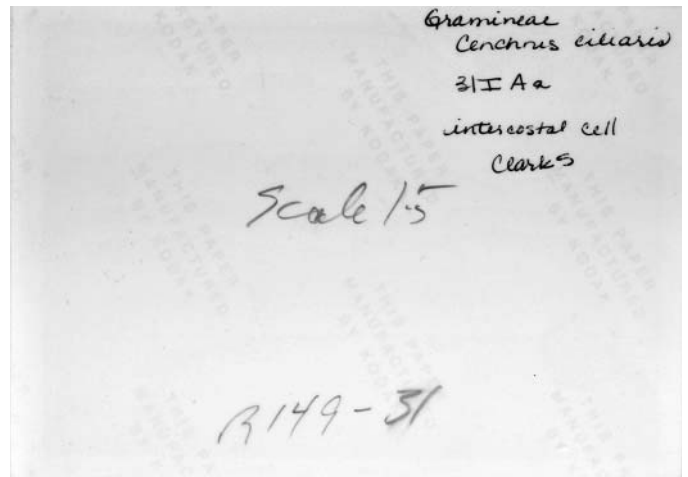
31IAa photo 1f.JPG



31IAa photo 1b.JPG



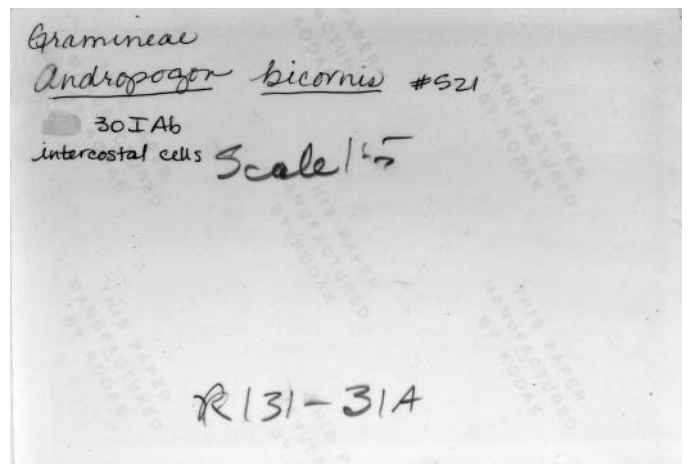
31IAa photo 2f.JPG



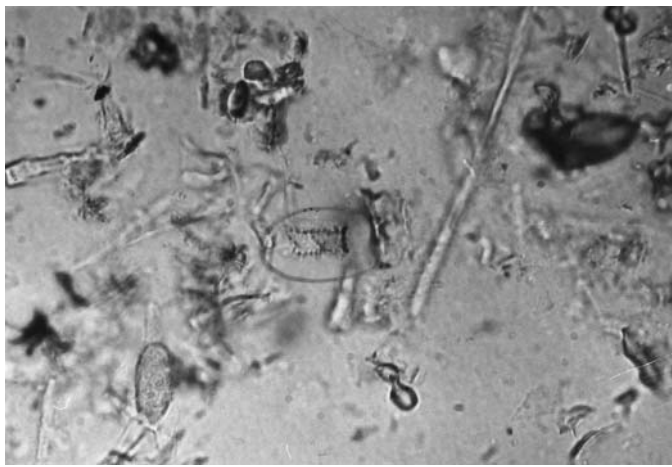
31IAa photo 2b.JPG



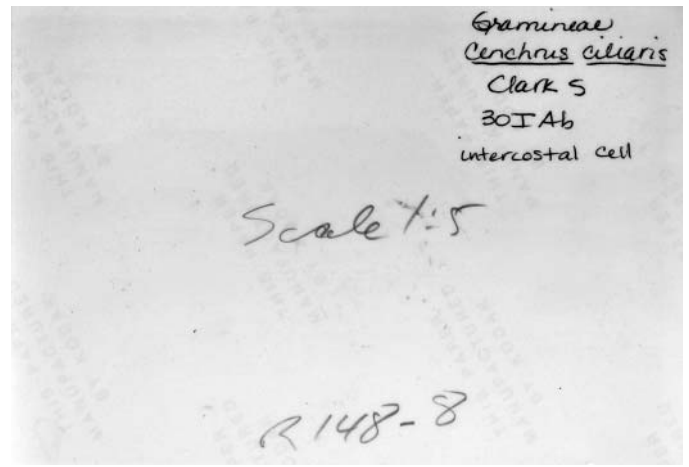
31IAb photo 1f.JPG



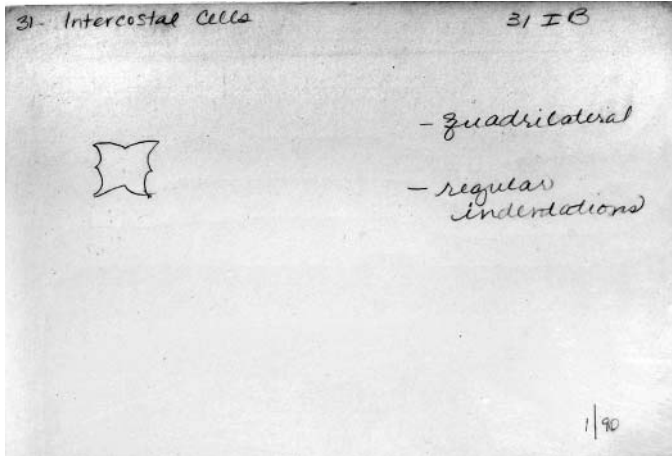
31IAb photo 1b.JPG



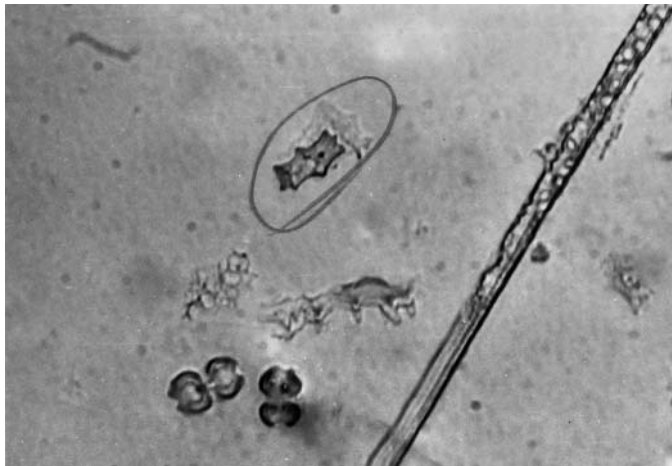
31IAb photo;to 2f.JPG



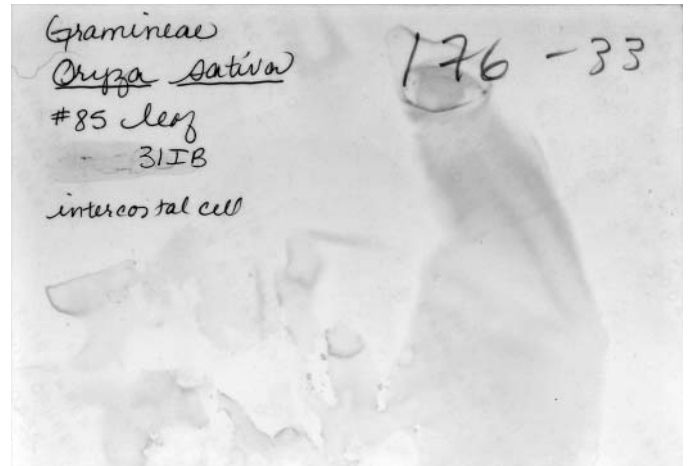
31IAb photo 2b.JPG



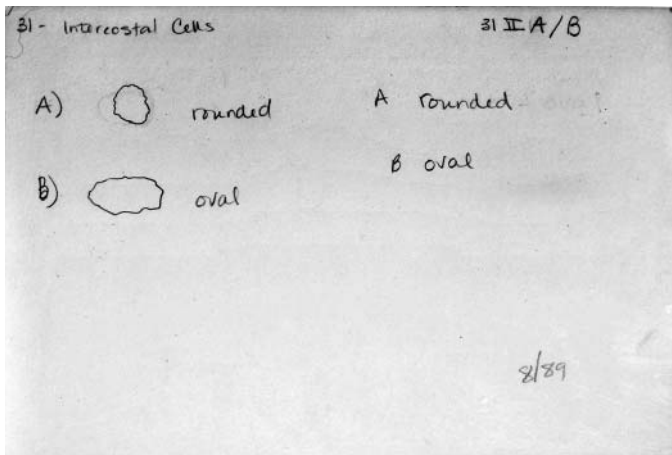
31IB card 1.JPG



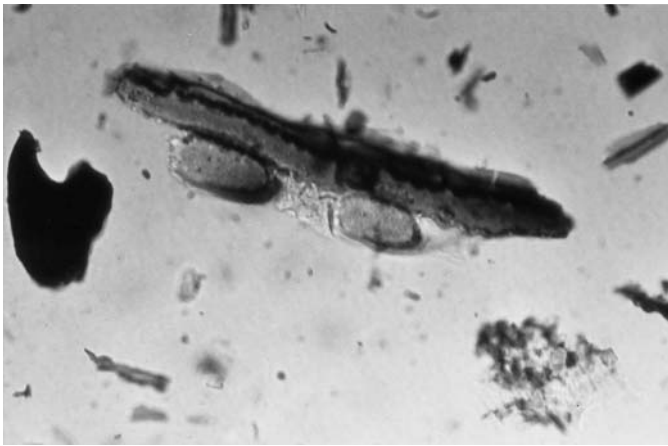
31IB photo 1f.JPG



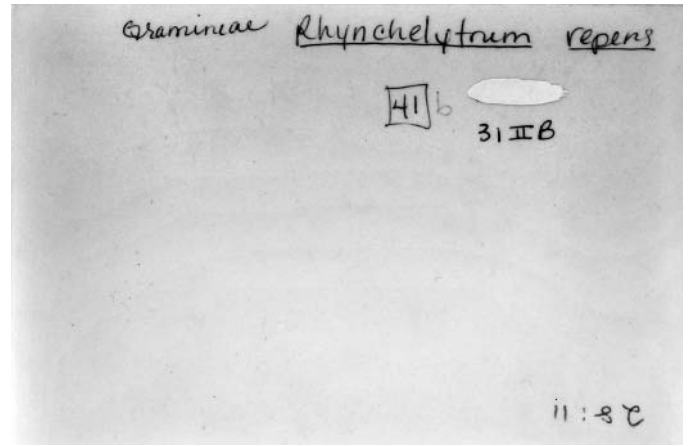
31IB photo 1b.JPG



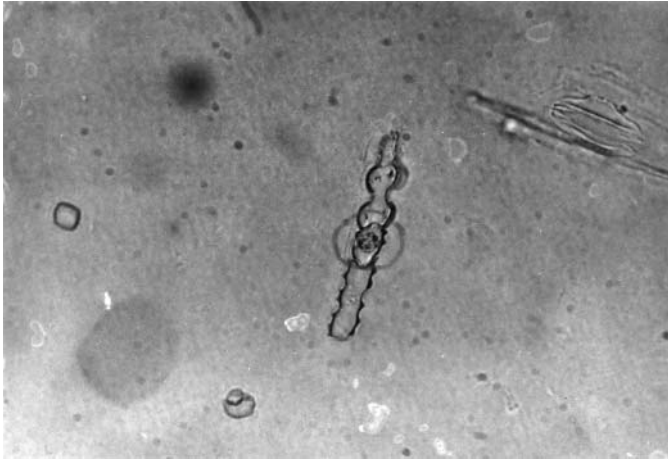
31IIA,B card 1.JPG



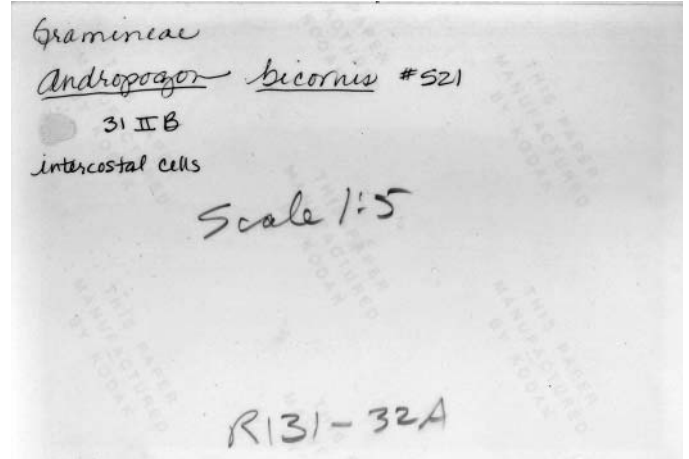
31IIB photo 1f.JPG



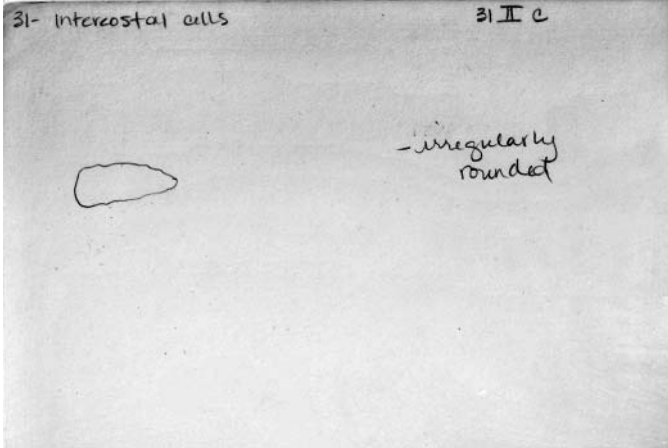
31IIB photo 1b.JPG



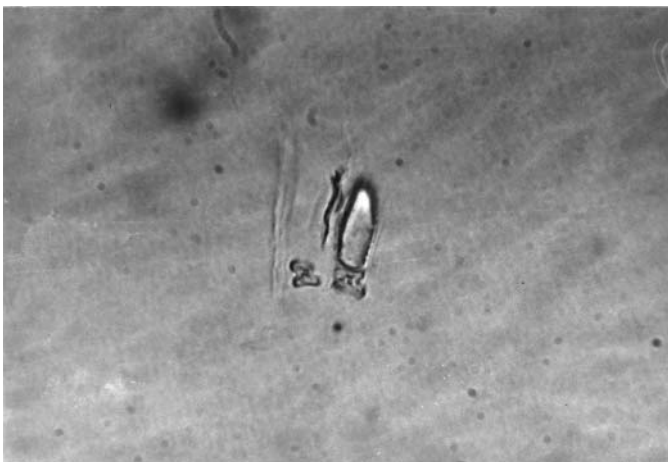
31IIB photo 2f.JPG



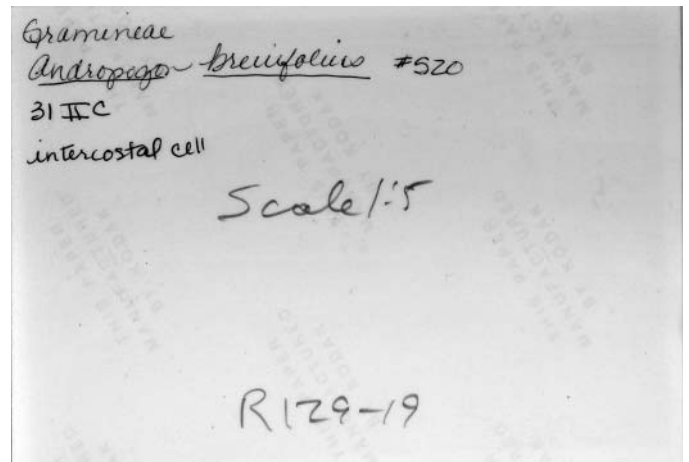
31IIB photo 2b.JPG



31C card 1.JPG



31IIC photo 1f.JPG



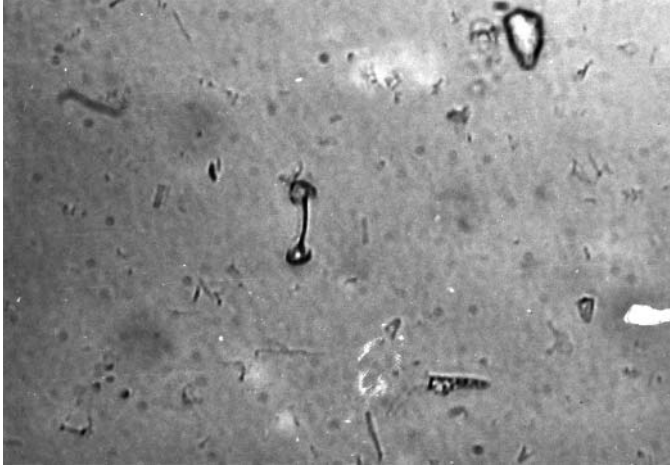
31IIC photo 1b.JPG

Intercostal Cells - Stomata 3BI III

moved to 120

5/17/99 RCE

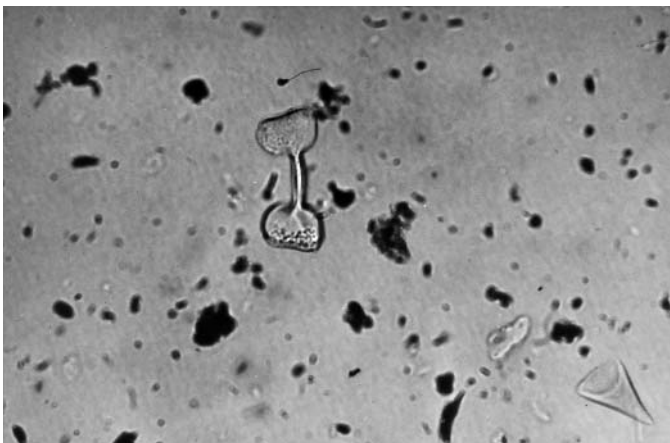
31III card 1.JPG



31III photo 1f.JPG



31III photo 2f.JPG



31III photo 3f.JPG

Gramineae
Oryza sativa
#85 leaf
31 III B

176-37

31III photo 1b.JPG

Gramineae
Oryza sativa
91 leaf
31 III B

178-28

31III photo 2b.JPG

33:12 a
oct 1

Gramineae
Saccharum officinarum

52

~~30 III B a b~~
not short cell!
31 III B
(part of Stomata)

31III photo 3b.JPG