

CATEGORY 26

Epidermal Non-Quadrilateral Rhizome, Tuber, or Root Epidermis

26I. Cylindrical

26IA. Distinctive head

- a. irregular rhizome cylinder: narrow head, body decoration is highly variable (Marantaceae, *Calathea* diagnostic)
- b. flat, domed rhizome cylinder: broad, smooth head, ciliate, beaded body (Marantaceae, *Calathea* diagnostic)

26IB. No distinctive head

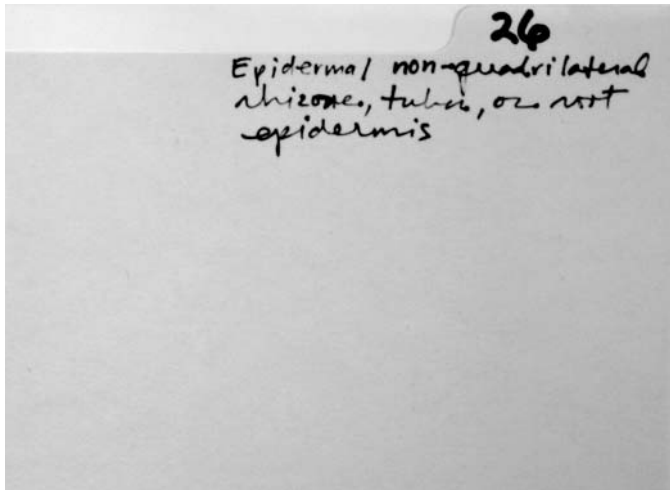
- a. Rhizome spindle: gradual taper to tip, nodular surface, very small (ca. 10 μ long) (Marantaceae, *Maranta/Calathea* diagnostic) (Old 26IB)
- b. Large elongated rhizome cylinder, ciliate or beaded decoration over entire body; narrow tip; ridged/furrowed body. In *Maranta arundinacea*, PC 2670
- c. "top" of cylinder only, with embedded circular body—projection*

26II. Flat

26IIA. elongate, undulating body (Dioscoreaceae, *Dioscorea*, genus level diagnostic)*

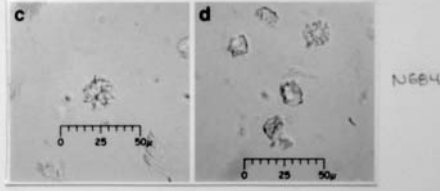
26IIB. flat rhizome type: platformed, decorated (Marantaceae, *Calathea*, genus level diagnostic)

*No card in MU card file



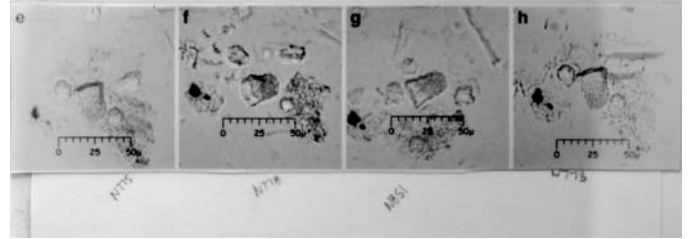
26 card1.jpg

26IAa Marantaceae (~~Maranta~~, Calathea) irregular rhizome cylinder: Small cylindrical bodies with undulating, beaded, nodular, or spiked surface decoration. Abruptly narrowed tip or head. Does not occur in other genera.



26IAa photo1.jpg

26IAb Marantaceae (~~Maranta~~, Calathea) flat domed rhizome cylinder: Cylindrical body with ciliate or beaded decoration along cylinder and a distinctive, smooth head. Overall shape a cylinder which is polygonal in cross section. Body size is smaller than related Marantaceae inflorescence types. Does not occur in other genera.



26IAb photo1.jpg

MUno 26IAb Image

Recno 259

Family Marantaceae

Genus Calathea

Species allouia

Authority

Comments

Type established by Karol Chandler-Ezell, 2004
Diagnostic level: ~~Maranta~~, Calathea, rhizome

Description

Flat domed rhizome cylinder: Cylindrical body with ciliate or beaded decoration along cylinder and a distinctive, smooth head. Overall shape a cylinder which is polygonal in cross section. Body size is smaller than related Marantaceae inflorescence types. Does not occur in other genera.

Entered by Emily Sternberg
Updated 2/22/2005

26IAb photo2.jpg

MUno 26IAb Image

Recno 261

Family Marantaceae

Genus Calathea

Species allouia

Authority

Comments

Type established by Karol Chandler-Ezell, 2004
Diagnostic level: ~~Maranta~~, Calathea, rhizome

Description

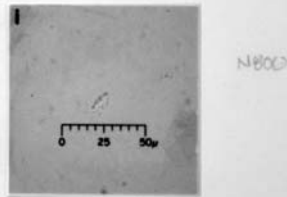
Flat domed rhizome cylinder: Cylindrical body with ciliate or beaded decoration along cylinder and a distinctive, smooth head. Overall shape a cylinder which is polygonal in cross section. Body size is smaller than related Marantaceae inflorescence types. Does not occur in other genera.

Entered by Emily Sternberg
Updated 2/22/2005

26IAb photo3.jpg

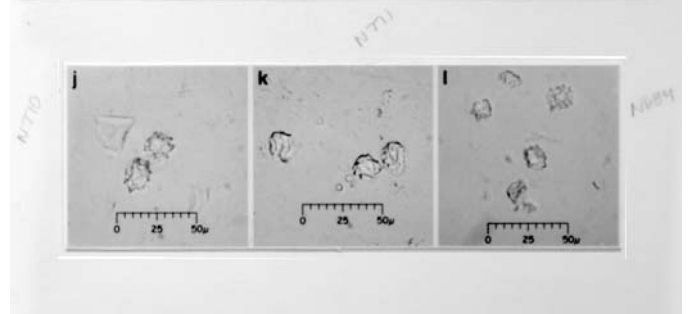
26IBa

[26IB] Marantaceae (Maranta, Calathea) rhizome spindle: Cylindrical body that tapers gradually to a pointed tip (lacks distinctive head area or distinctly separate cylinder and head areas). Nodular surface decoration. Body is round in cross section. Does not occur in other genera.



26IBa photo1.jpg

26IIB Calathea flat rhizome type: Flattened, somewhat elongated body with a decorated, beaded edge, and an elongate, irregularly stellate center. Center appears somewhat elevated above the ends (platform appearance).



26IIB photo1.jpg

MUno 26IIB Image

Recno 245

Family Marantaceae

Genus Calathea

Species allouia

Authority

Comments

Type established by Karol Chandler-Ezell, 2004
Diagnostic level: genus, rhizome

Description

Flat rhizome type: flattened, somewhat elongated body with a decorated, beaded edge, and an elongate, irregularly stellate center. Center appears somewhat elevated above the ends (platform appearance).

Entered by Emily Sternberg
Updated 2/5/2005

26IIB photo2.jpg