

CATEGORY 24

Epidermal Non-Quadrilateral Three-Dimensional/Blocky

24I. rounded

24IA. "pyramidal" top

24IB. irregular

24IC. multifaceted; blocky; may have grainy surface and edge projections
(Euphorbiaceae, *Amonoa anomata*, family level diagnostic)

24II. angled

24IIA. burin shape

24IIB. beaked

24IIC. sinuous; short edges concave

24IID. four concave edges

24IIE. irregular

24IIF. faceted

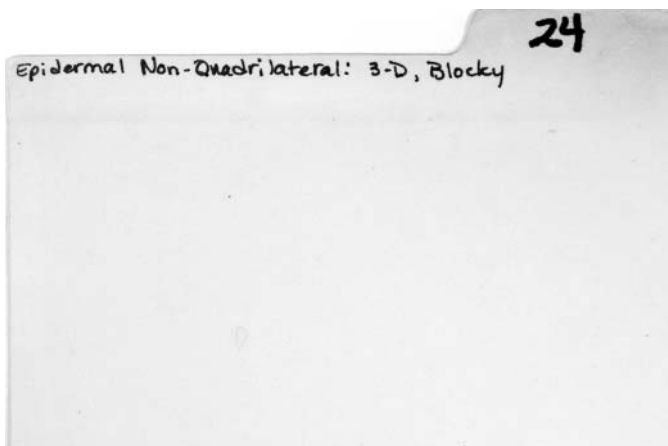
24IIG. elongated; irregular; lens-shaped pattern on part;
grainy surface on part striated parallel to short edges (UC Riverside type)*

24IIH. angled

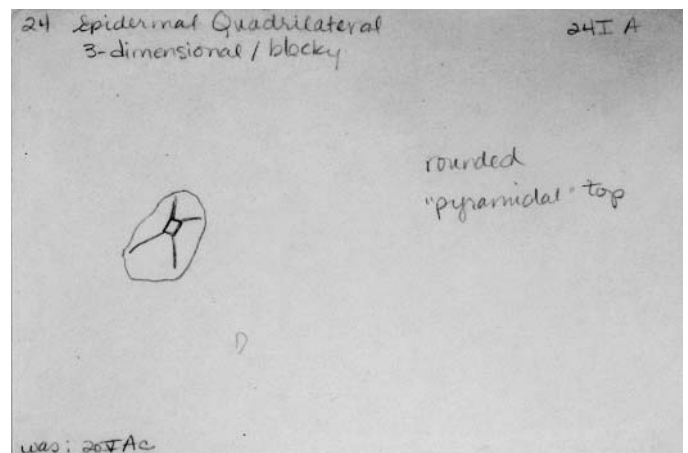
a. epidermal non-quadrilateral with broad branches in one plane; branches faceted;
surface grainy (*Dichapetalaceae*, *Tapura peruviana*, family level diagnostic)

b. others: branches pointed and thin

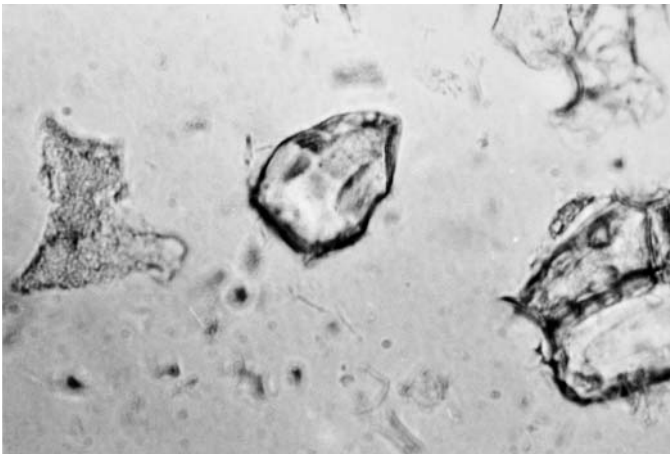
*No Card in MU card file



24 card1.jpg



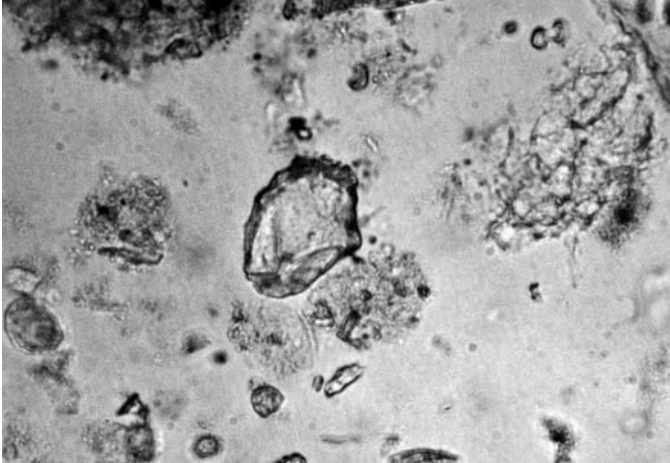
24 card2.jpg



24IA photo1f.jpg

Dichapetalaceae
Tapusa peruviana
#53 leaf
24IA
R 162 38

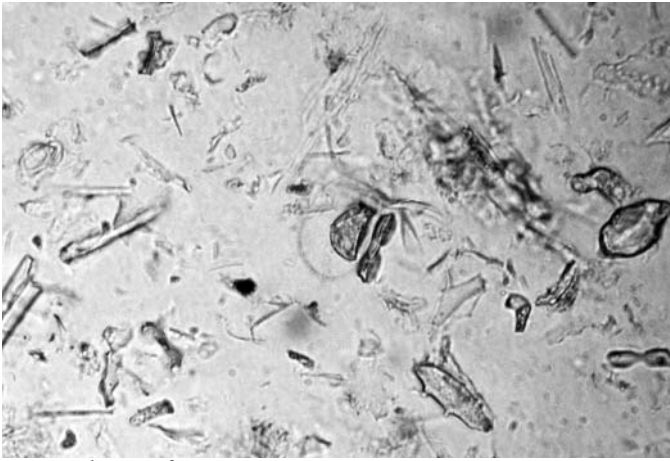
24IA photo1b.jpg



24IA photo2f.jpg

Chytosail 24IA
623
Jelstoy
Scale 1:5
87R109-24

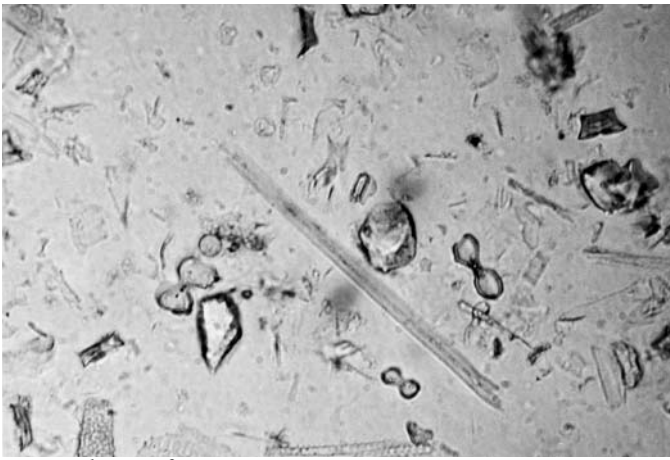
24IA photo2b.jpg



24IA photo3f.jpg

Gramineae
Cenchrus ciliaris
Clark S
24IA
Scale 1:5
R148

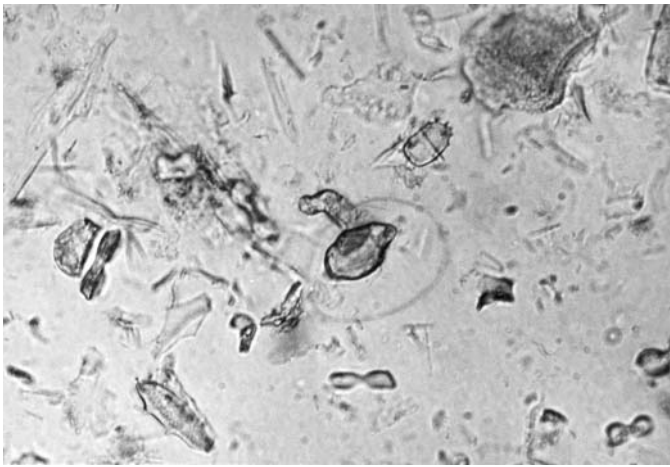
24IA photo3b.jpg



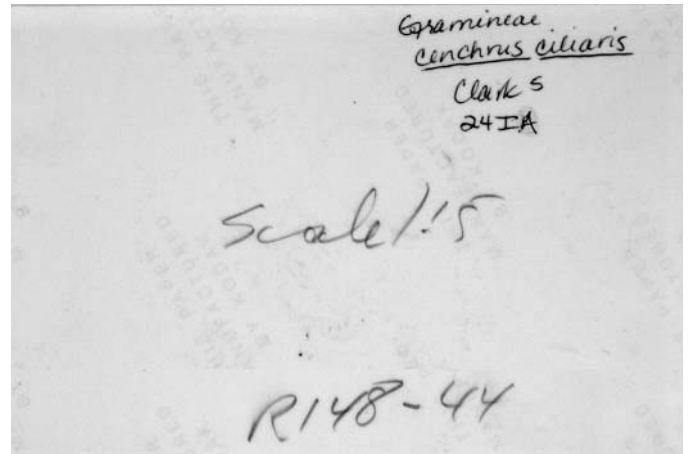
24IA photo4f.jpg

Gramineae
Cenchrus ciliaris
Clark S
24IA
Scale 1:5
R148-14

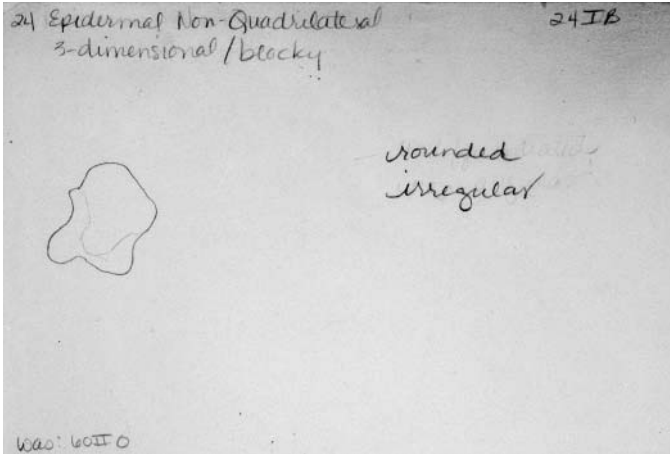
24IA photo4b.jpg



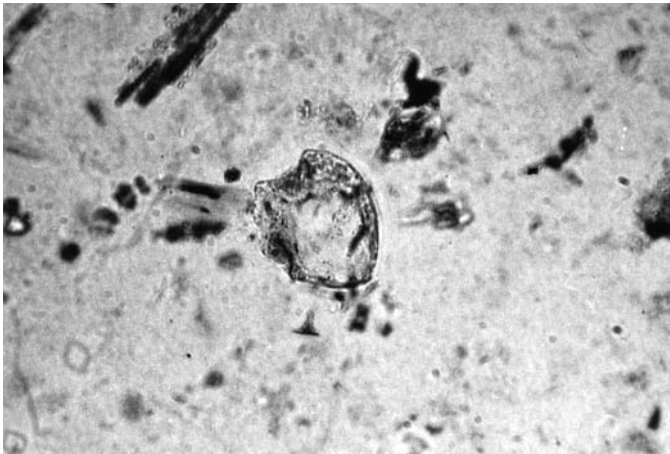
24IA photo5f.jpg



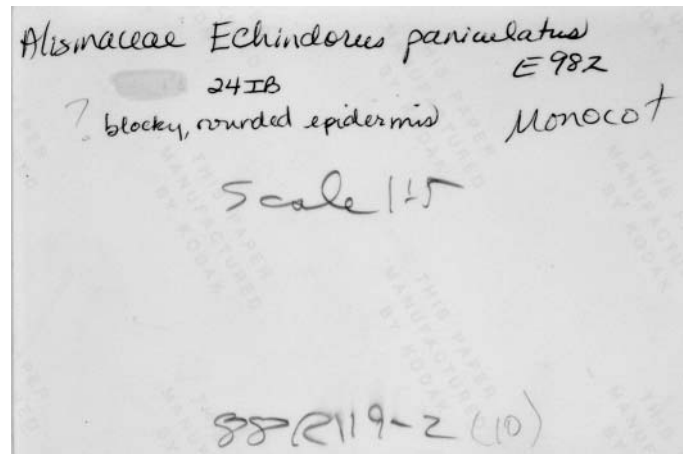
24IA photo5b.jpg



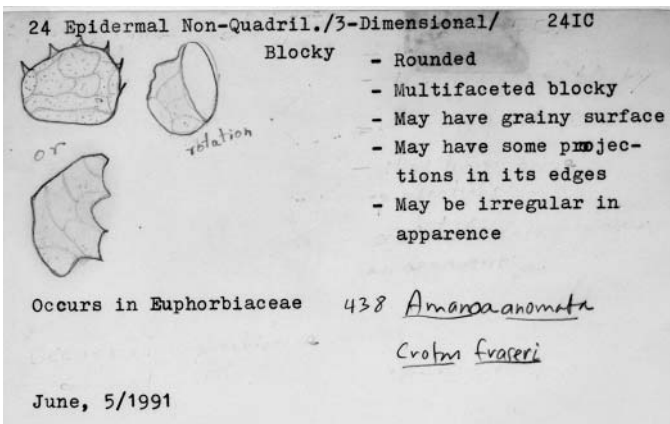
24IB card1.jpg



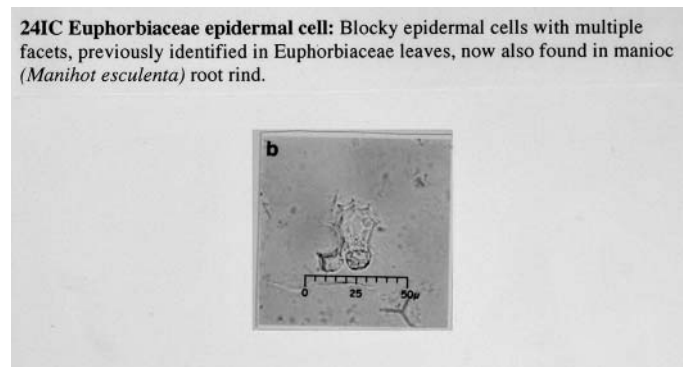
24IB photo1f.jpg



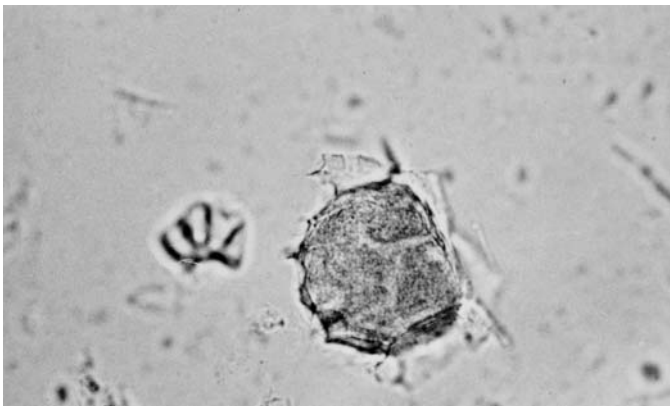
24IB photo1b.jpg



24IC card1.jpg



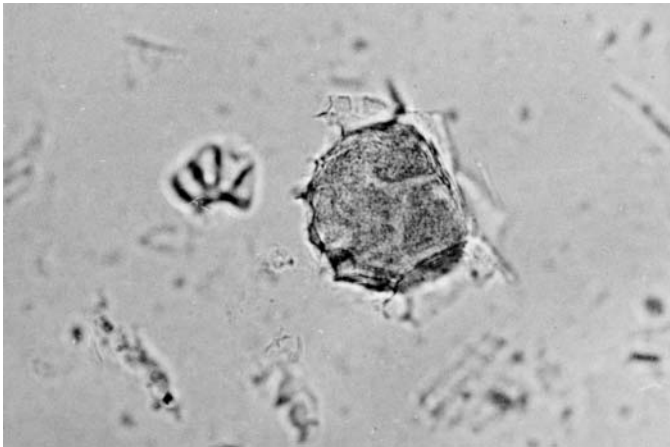
24IC photo1f.jpg



24IC photo2f.jpg

438 (L)
 Euphorbiaceae
Amorua anomala
 24IC
 268
 Fr 1
 5.6 # 3 1/2
 10sec

24IC photo2b.jpg



24IC photo3f.jpg

438
 Euphorbiaceae
Amorua anomala
 24IC
 267-268
 Fr 2
 2 1/2 f 11
 10SEC

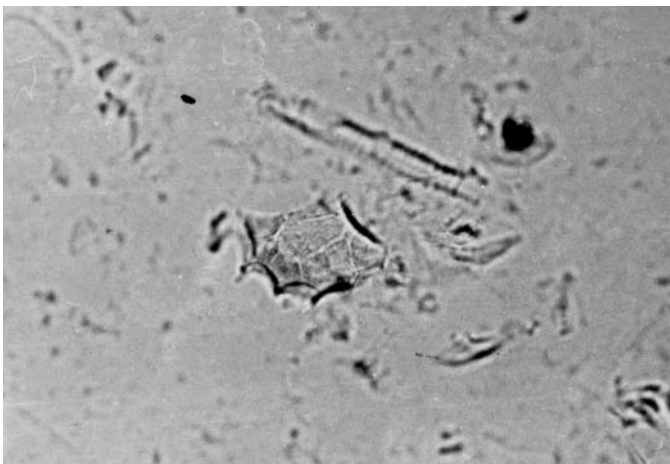
24IC photo3b.jpg



24IC photo4f.jpg

Euphorbiaceae
Amorua anomala
 438 L.
 24IC
 322
 35

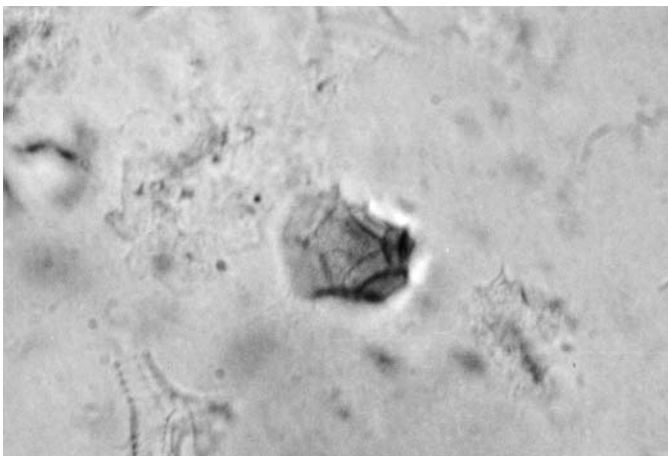
24IC photo4b.jpg



24IC photo5f.jpg

438 (L)
 Euphorbiaceae
Amorua anomala
 24IC
 267-268
 Fr 43
 2 1/2 f 11
 10sec

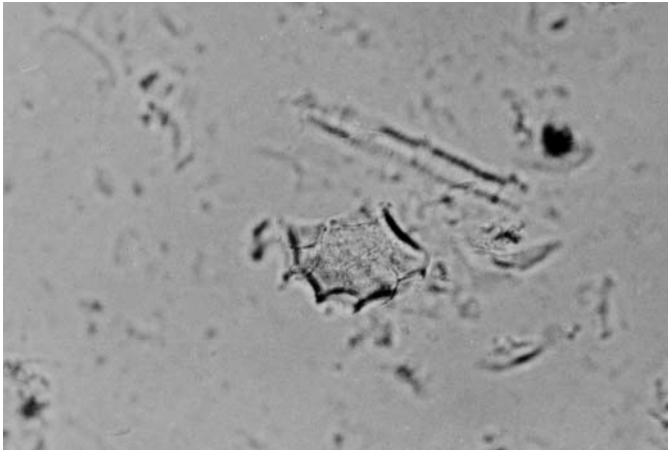
24IC photo5b.jpg



24IC photo6f.jpg

Euphorbiaceae 24IC 225
Amonoa anomala Fr 34
 5.6 3 1/2
 9sec
 Epidermal
 multi-faceted
 hair base

24IC photo6b.jpg



24IC photo7f.jpg

#438 267-268
 Euphorbiaceae Fr 1
Amonoa anomala 2 1/2 f11
 24IC 10sec

24IC photo7b.jpg

MU# 24IC Image
 Recno 57
 Family Euphorbiaceae
 Genus Amonoa
 Species anomala
 Authority Little
 Comments
 View of rounded side... projections not visible, facets not distinct in this view. Be sure to rotate to see both views. Diagnostic level: family

Description
 - Multifaceted, blocky quadrilateral, on at least one side rounded or spheroidal in rotation
 - May have grainy surface
 - Projections on some edges
 - May be irregular in appearance

Entered by Karol Chandler-Ezell
 Updated 10/7/2002

24IC photo8f.jpg

MU# 24IC Image
 Family Euphorbiaceae
 Genus Amonoa
 Species anomala
 Binomial Name
 Comments
 be sure to rotate blocky quadrilaterals to see the distinct nature of the projections in this type.

Description
 Multifaceted, blocky quadrilateral, on at least one side rounded or spheroidal in rotation may have grainy surface projections on some edges may be irregular in appearance

Entered by Karol Chandler-Ezell
 Date 4/9/99

Contributed Information

24IC photo9f.jpg

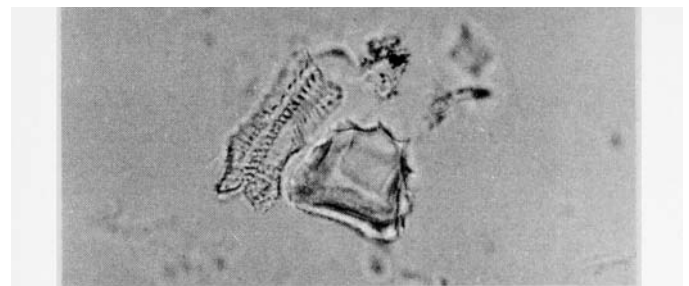
MU# 24IC Image
 Family Euphorbiaceae
 Genus Amonoa
 Species anomala
 Binomial Name
 Comments

Description
 Multifaceted, blocky quadrilateral, on at least one side rounded or spheroidal in rotation may have grainy surface projections on some edges may be irregular in appearance

Entered by Karol Chandler-Ezell
 Date 4/9/99

Contributed Information

24IC photo10f.jpg

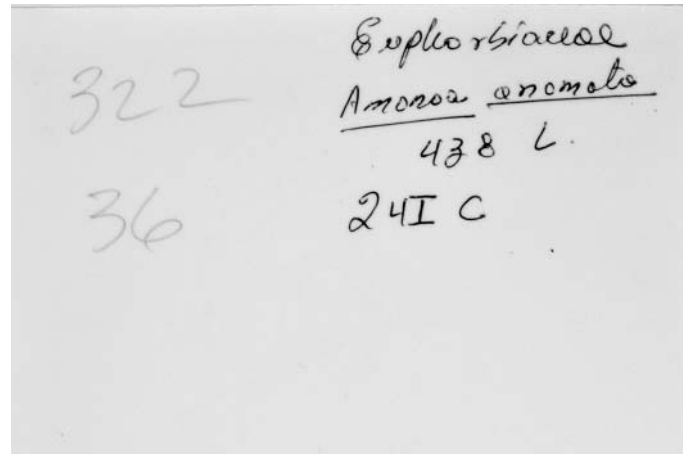


24IC
 Description:
 Epidermal nonquadrilateral blocky. Rounded or spheroidal on at least one side. Multifaceted projections on some facet edges. May have grainy surfaces. Overall shape varies from spheroidal to hemispherical.

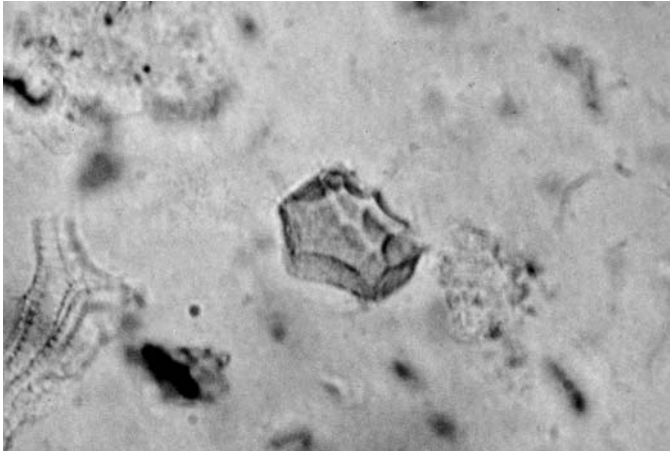
24IC photo11f.jpg



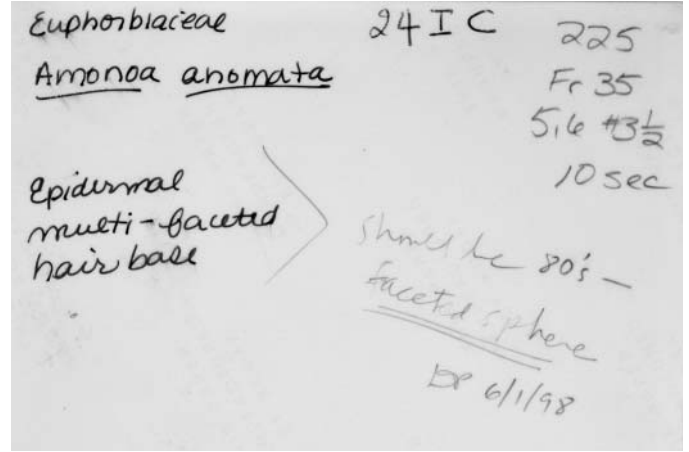
24IC photo12f.jpg



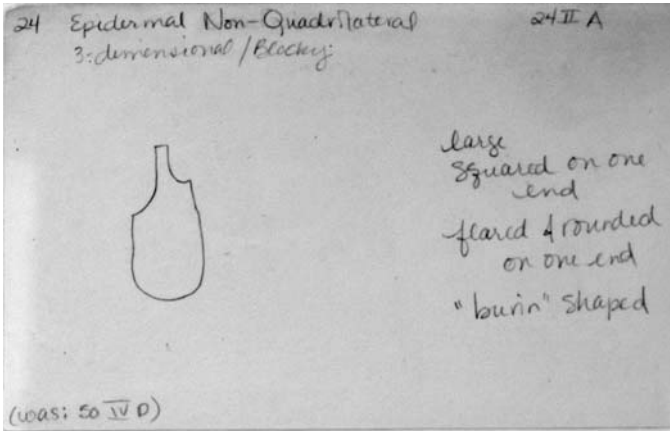
24IC photo12b.jpg



24IC photo13f.jpg



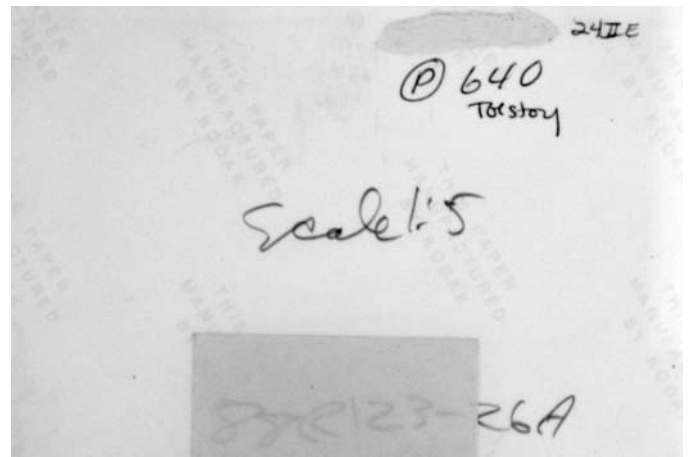
24IC photo13b.jpg



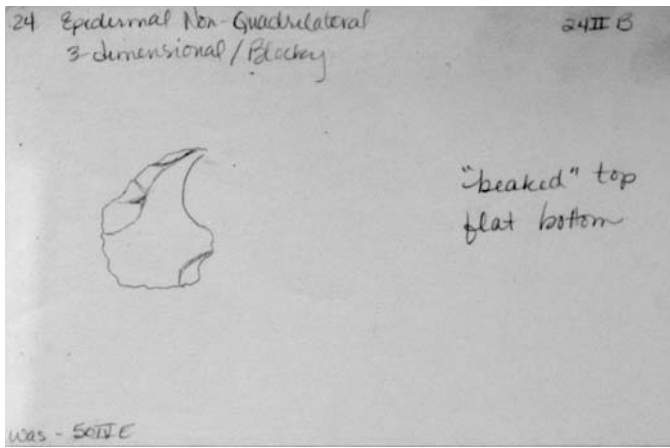
24IIA card1.jpg



24IIE photo0f.jpg



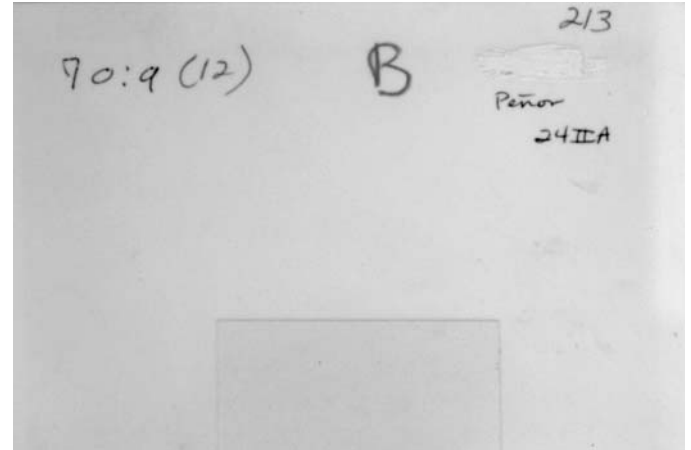
24IIE photo0b.jpg



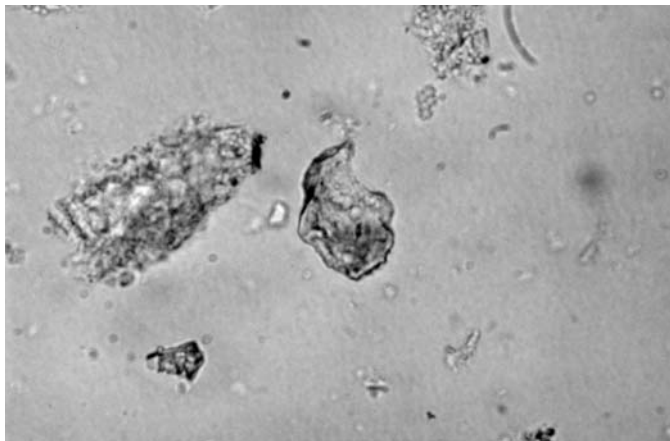
24IIB card1.jpg



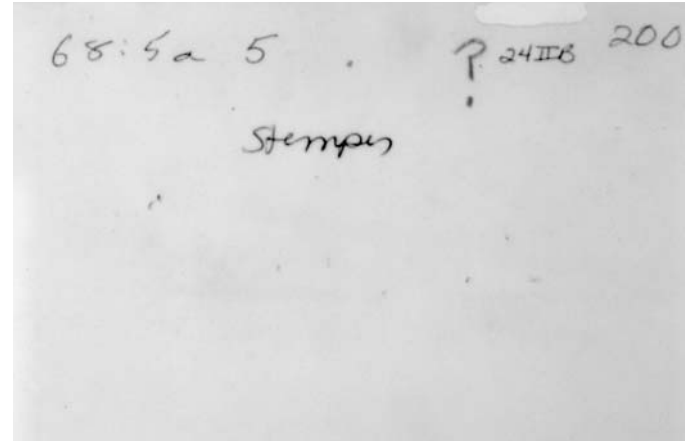
24IIA photo1f.jpg



24IIA photo1b.jpg



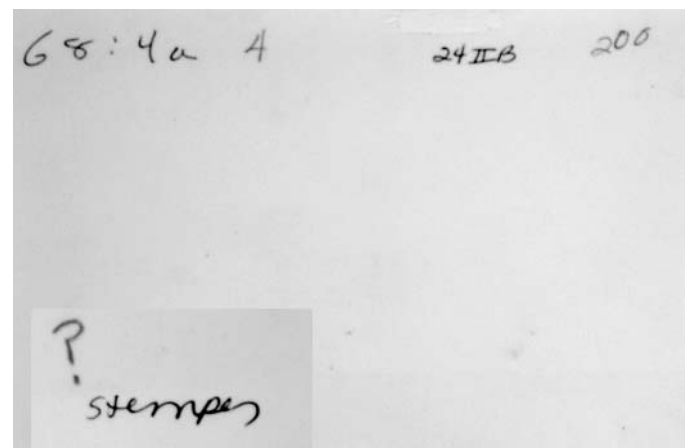
24IIB Photo1f.jpg



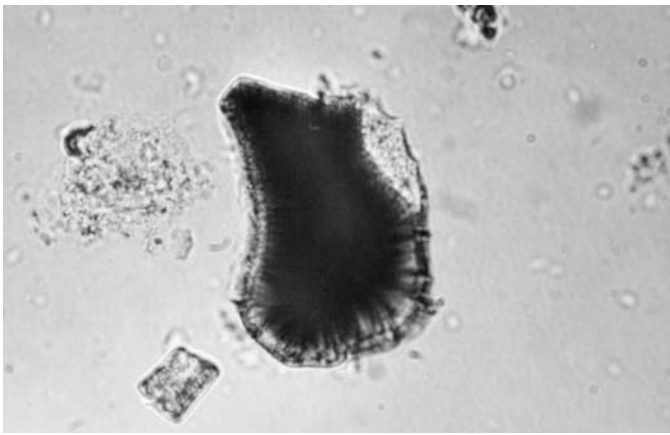
24IIB Photo1b.jpg



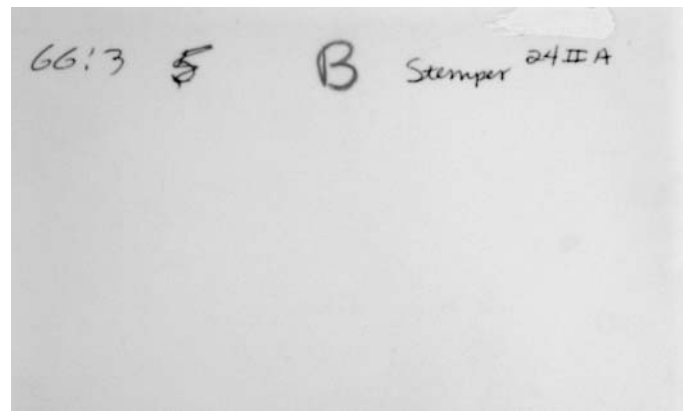
24IIB Photo2f.jpg



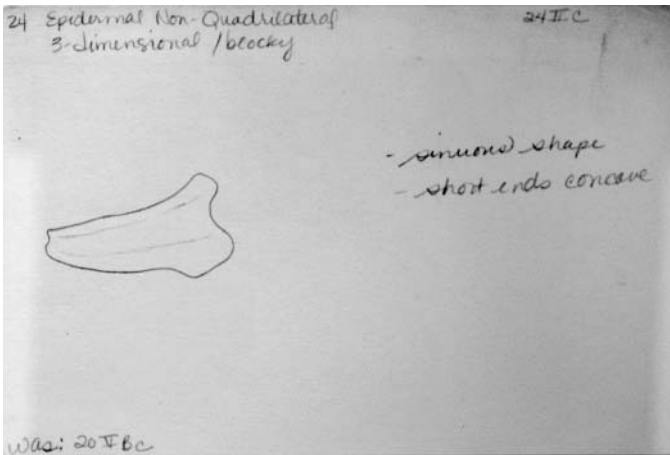
24IIB Photo2b.jpg



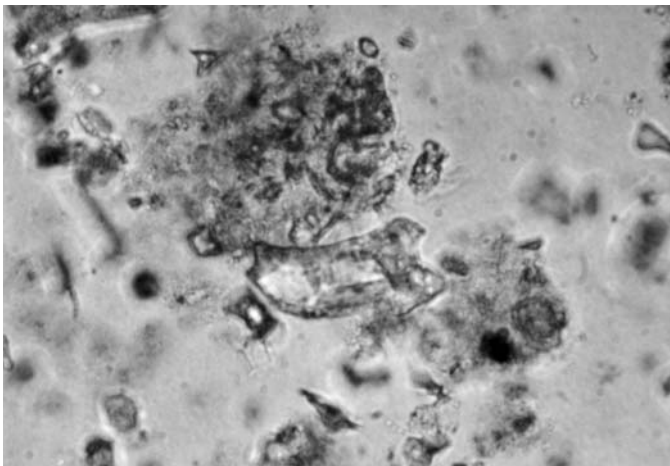
24IIA photo2f.jpg



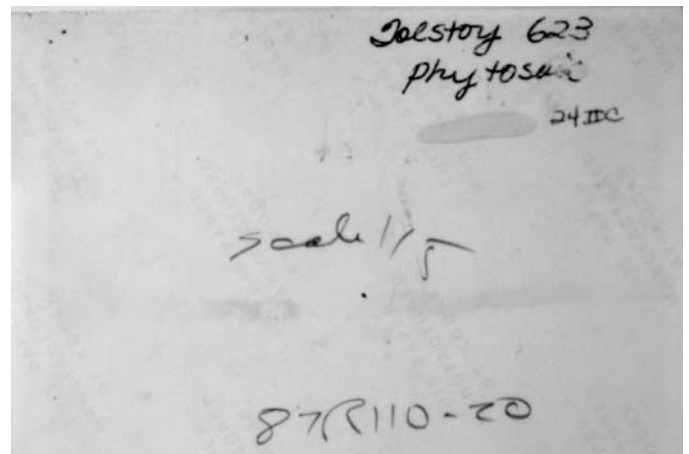
24IIA photo2b.jpg



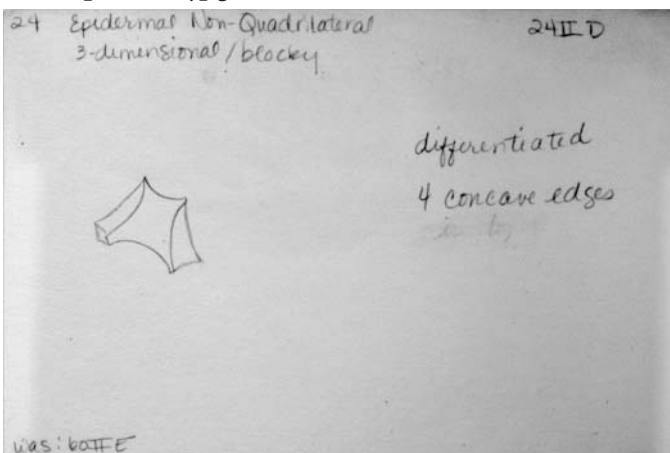
24IIC card1.jpg



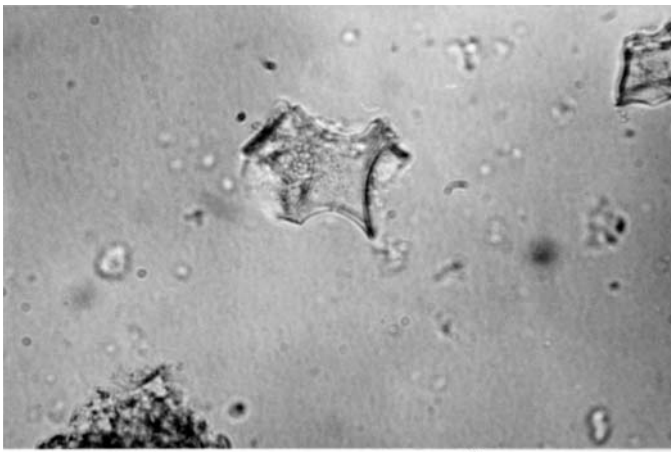
24IIC photo1f.jpg



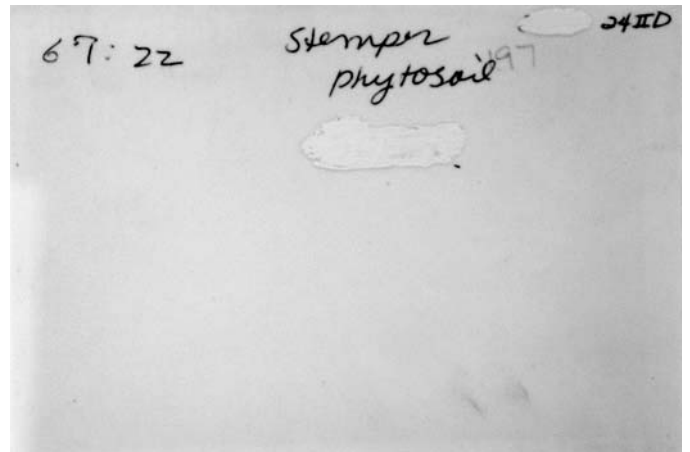
24IIC photo1b.jpg



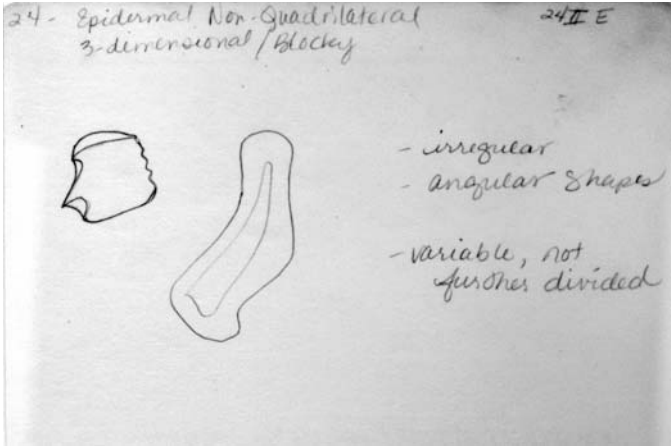
24IID card1.jpg



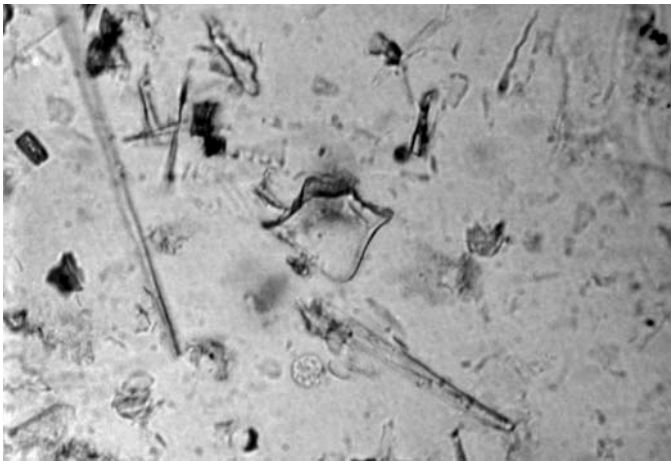
24IID photo1f.jpg



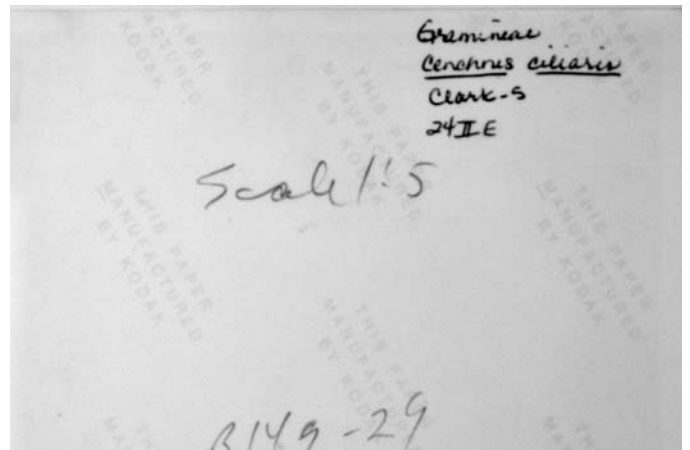
24IID photo1b.jpg



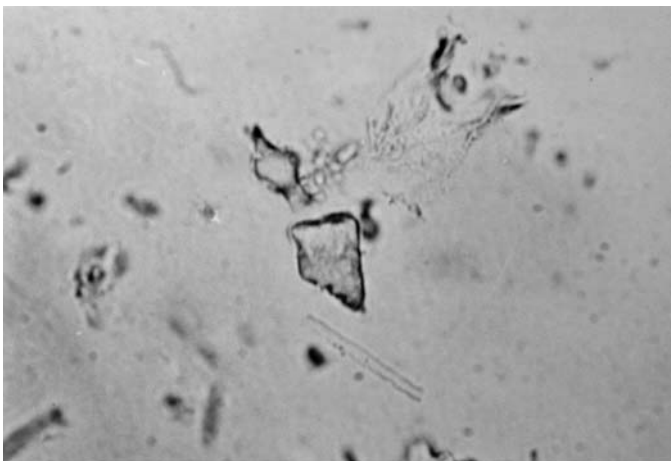
24IIE card1.jpg



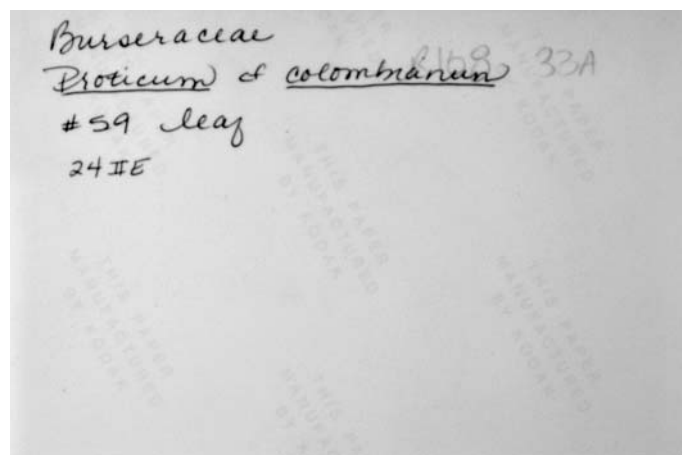
24IIE photo1f.jpg



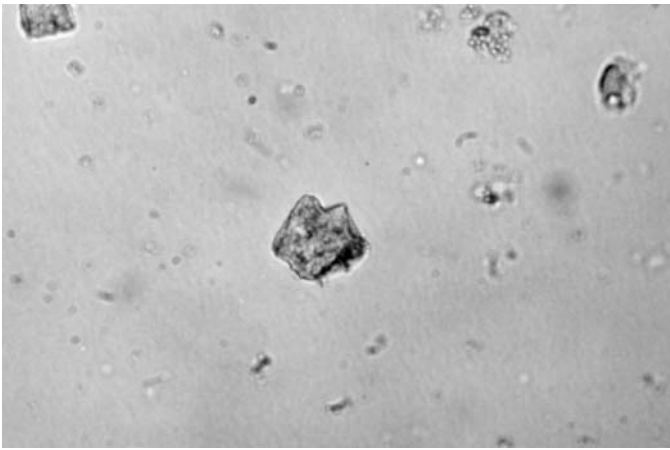
24IIE photo1b.jpg



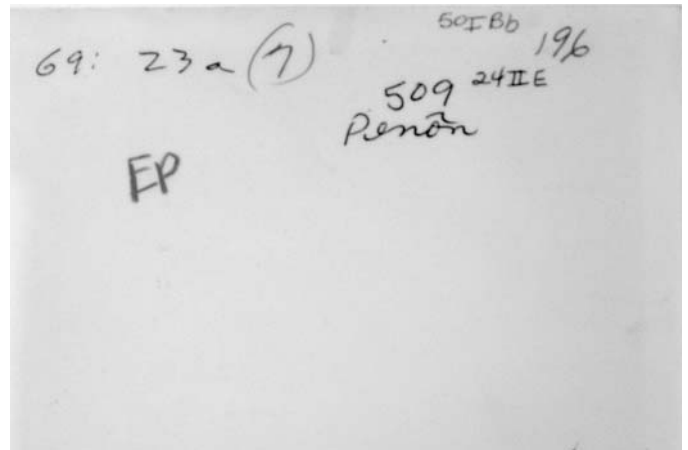
24IIE photo2f.jpg



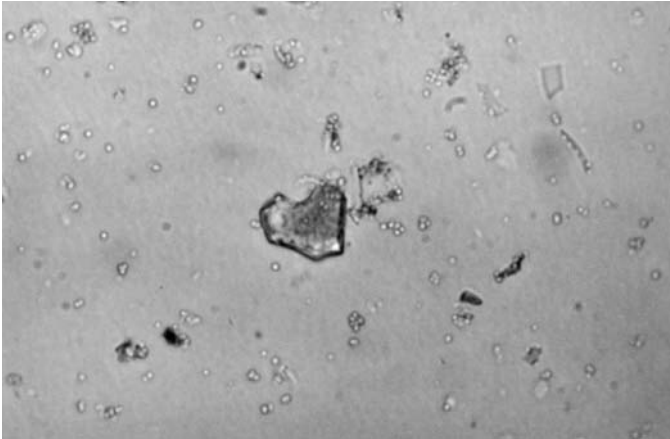
24IIE photo2b.jpg



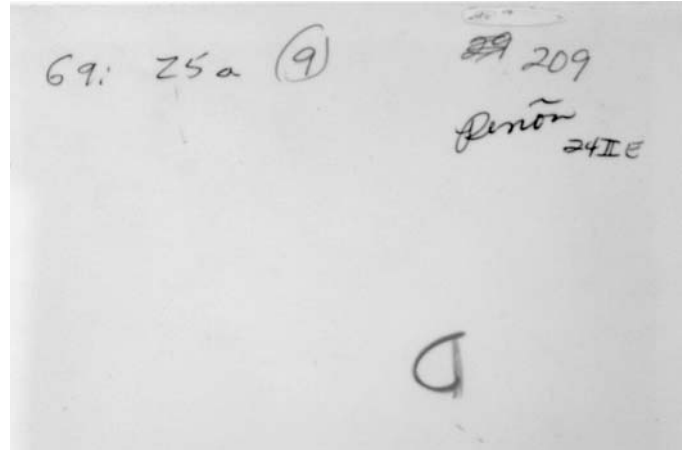
24IIE photo3f.jpg



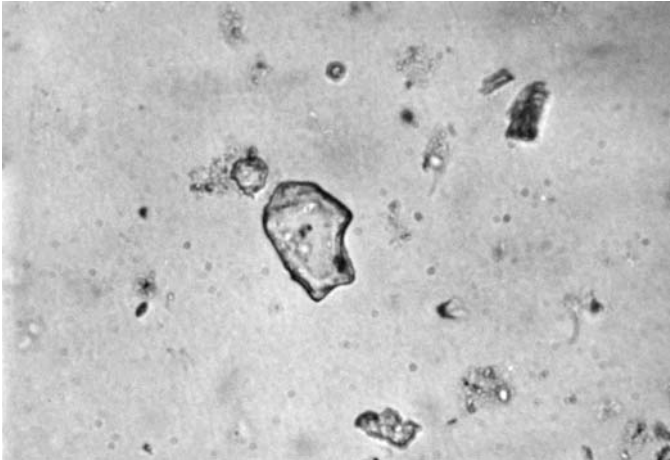
24IIE photo3b.jpg



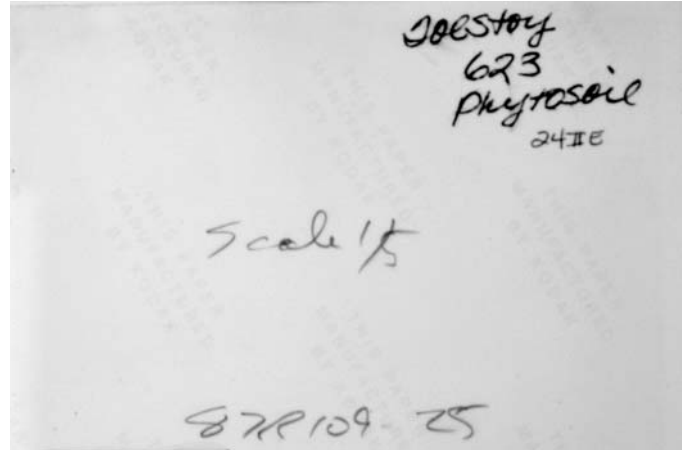
24IIE photo4f.jpg



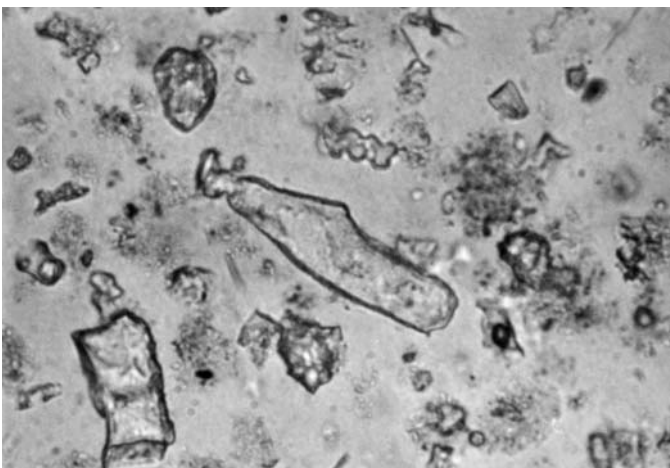
24IIE photo4b.jpg



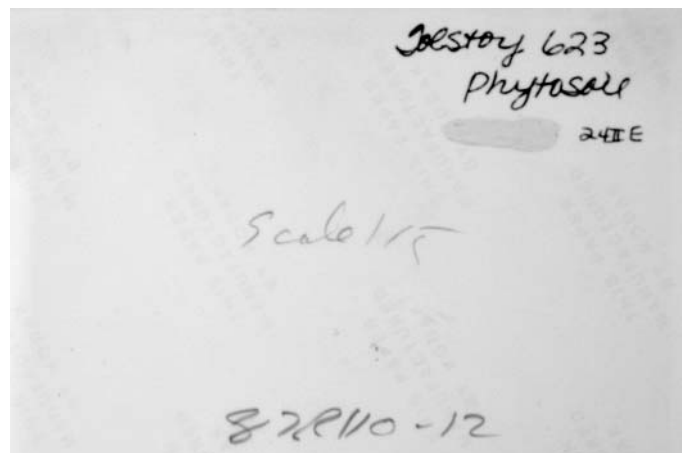
24IIE photo5f.jpg



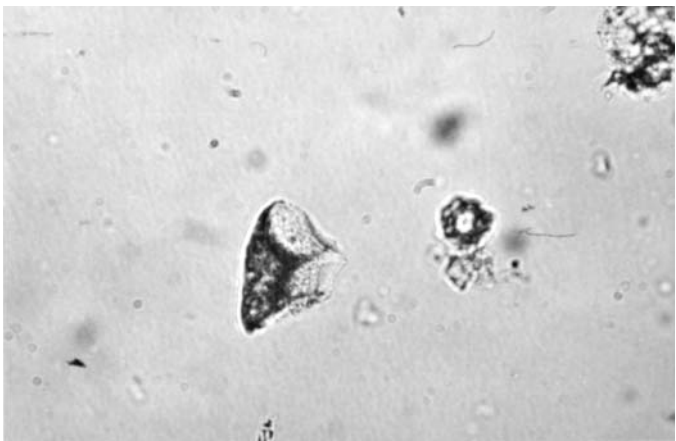
24IIE photo5b.jpg



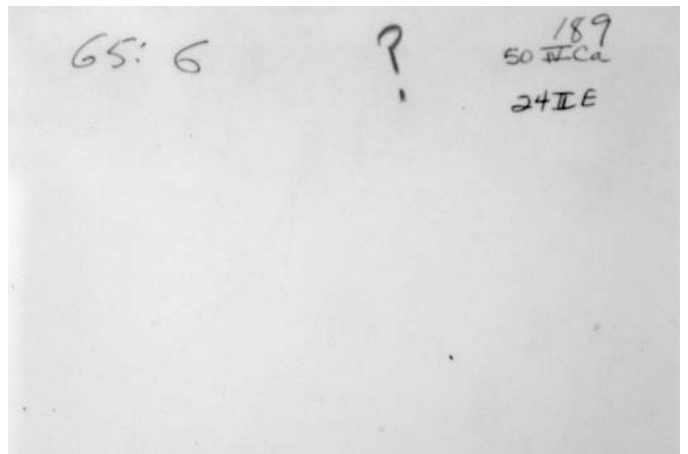
24IIE photo6f.jpg



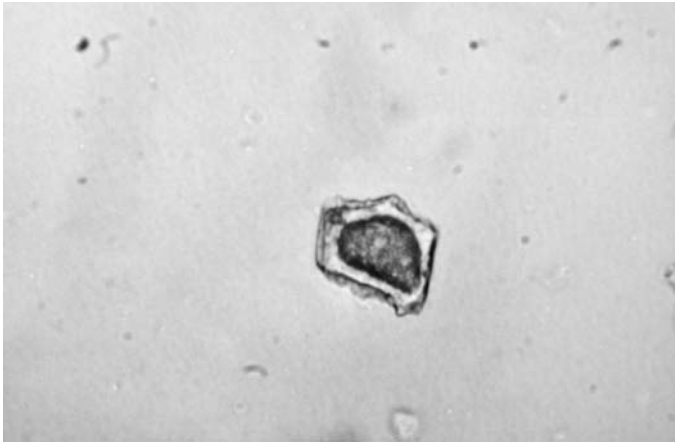
24IIE photo6b.jpg



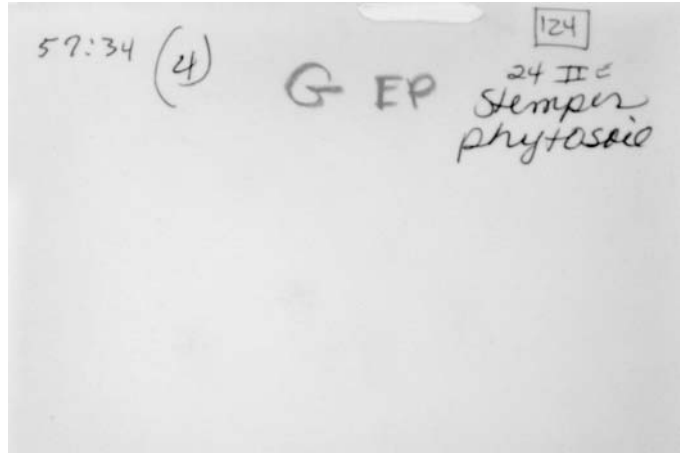
24IIE photo7f.jpg



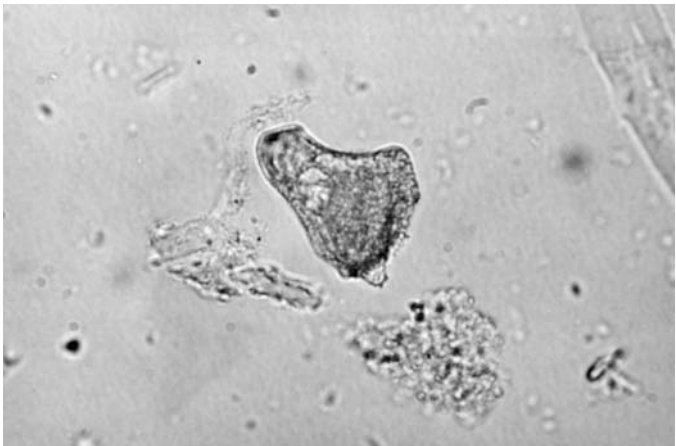
24IIE photo7b.jpg



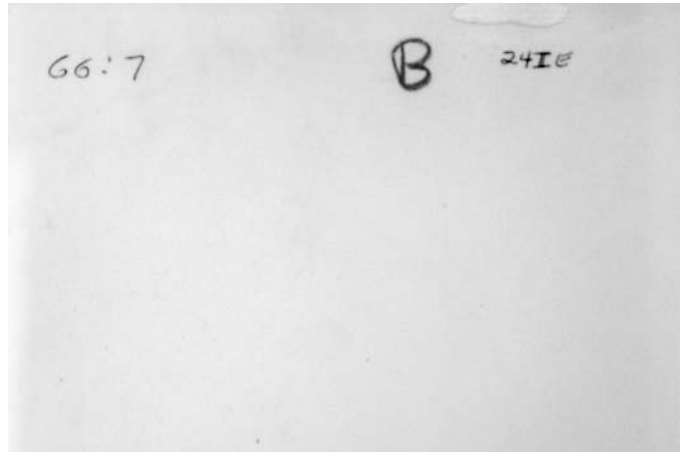
24IIE photo8f.jpg



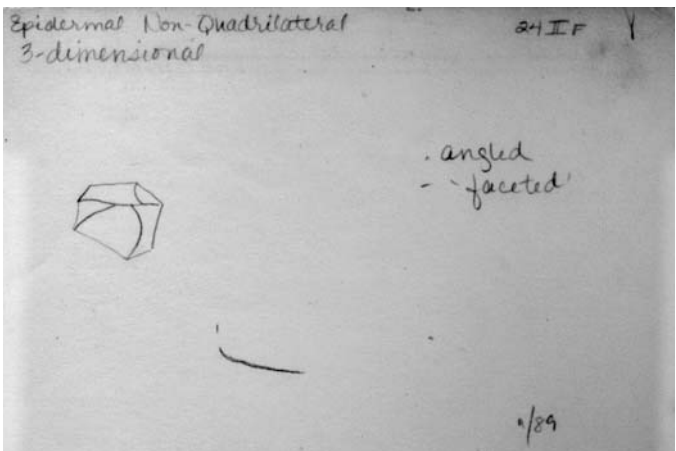
24IIE photo8b.jpg



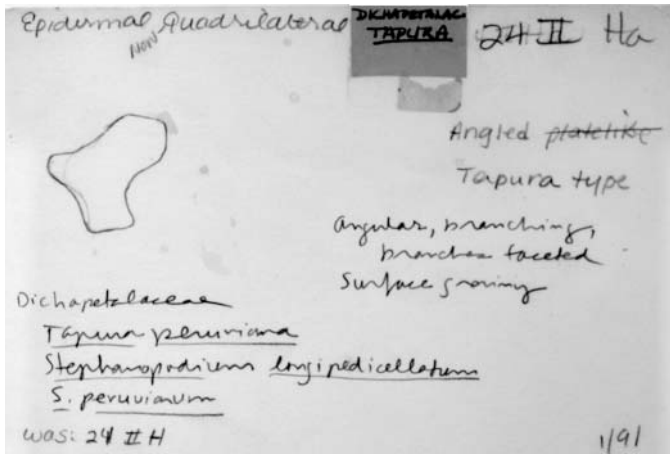
24IIE photo9f.jpg



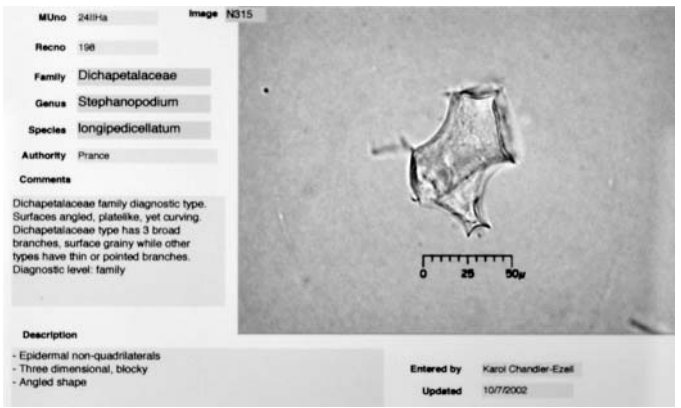
24IIE photo9b.jpg



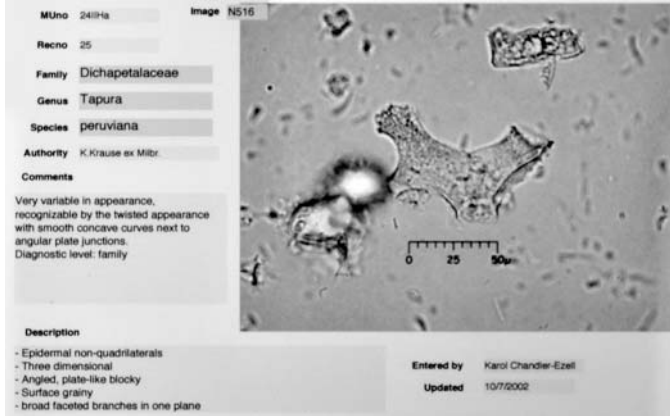
24IIF card1.jpg



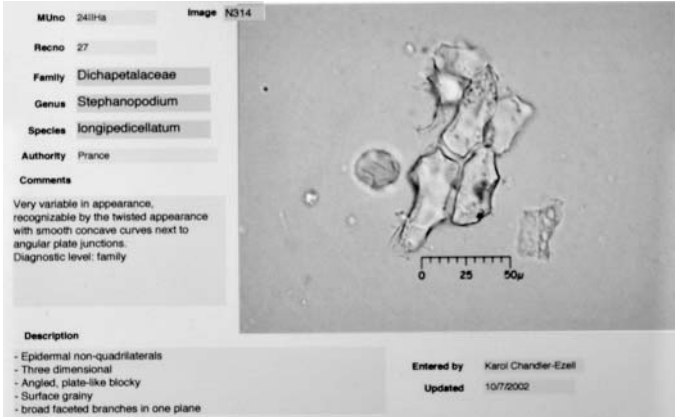
24IIHa card1.jpg



24IIHa photo1.jpg



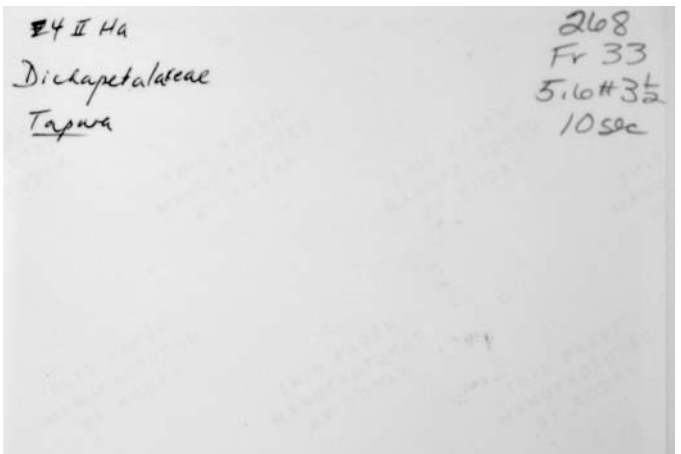
24IIHa photo2.jpg



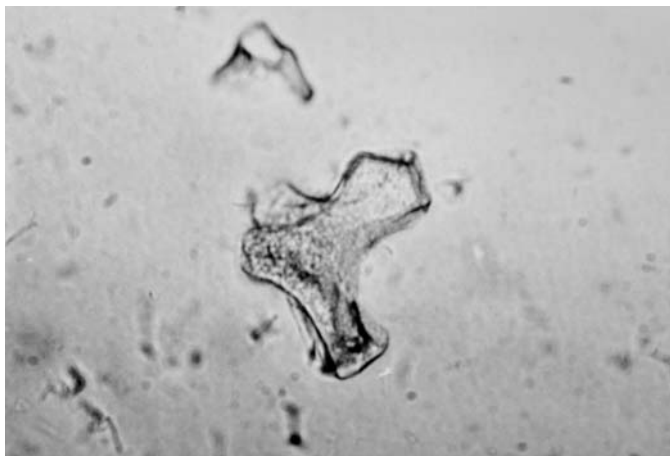
24IIHa photo3.jpg



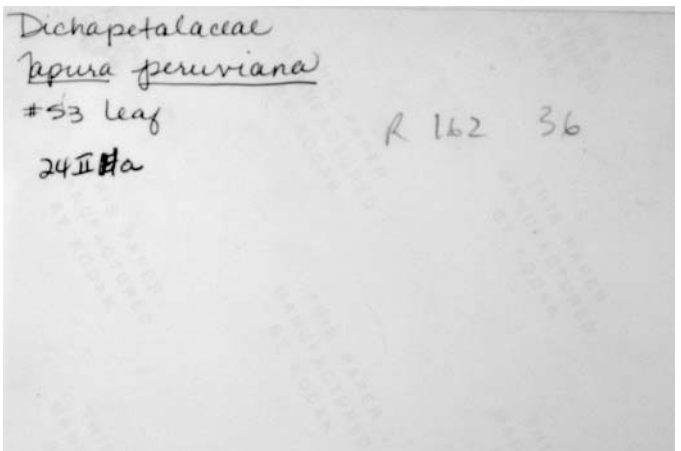
24IIHa photo4f.jpg



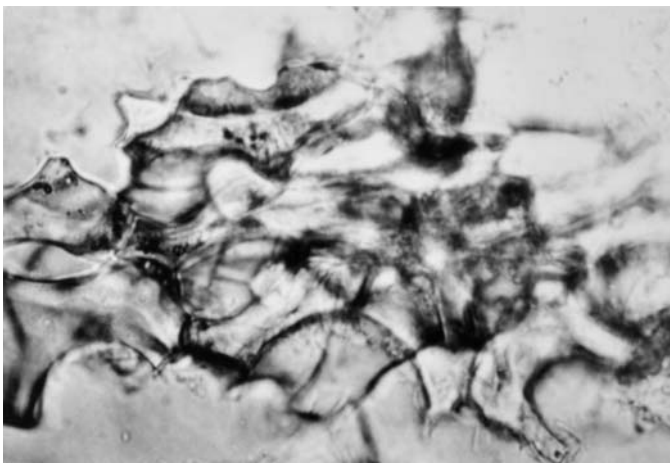
24IIHa photo4b.jpg



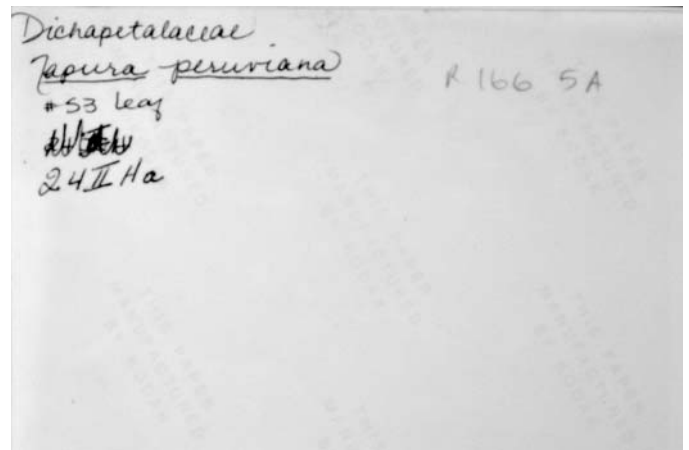
24IIHa photo5f.jpg



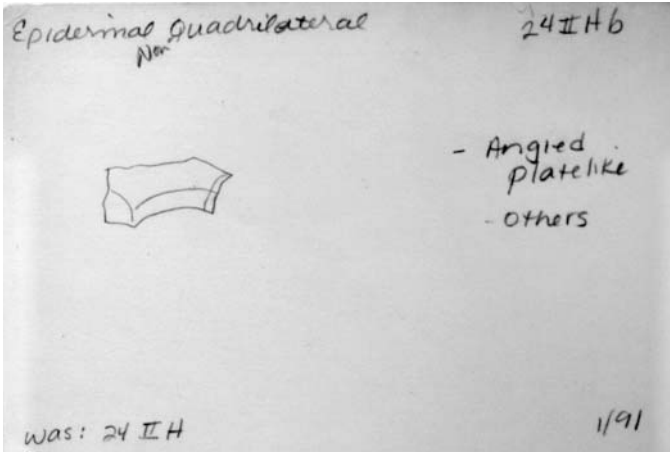
24IIHa photo5b.jpg



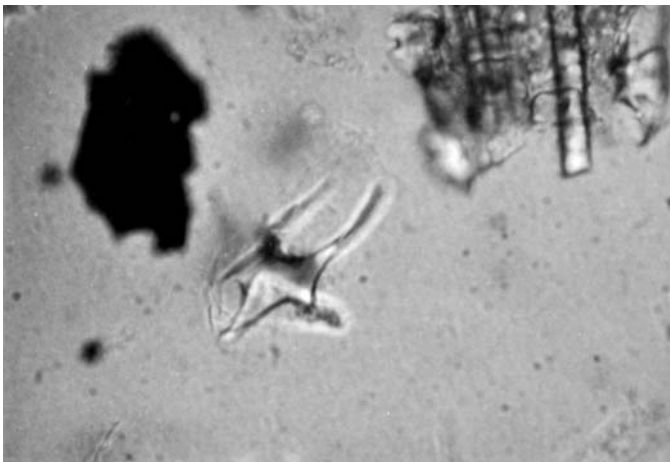
24IIHa photo6f.jpg



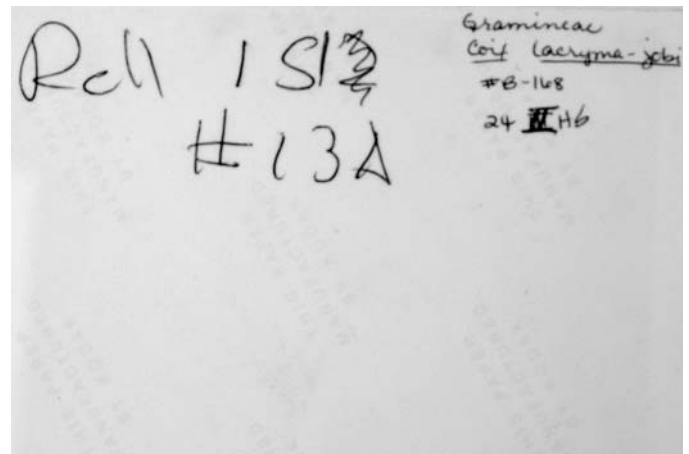
24IIHa photo6b.jpg



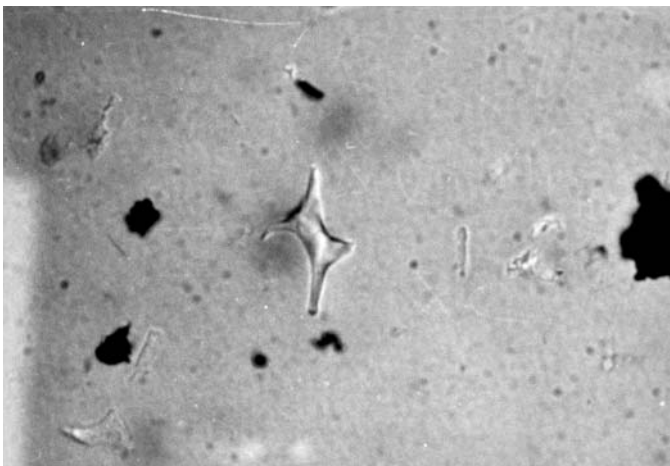
24IIHb card1.jpg



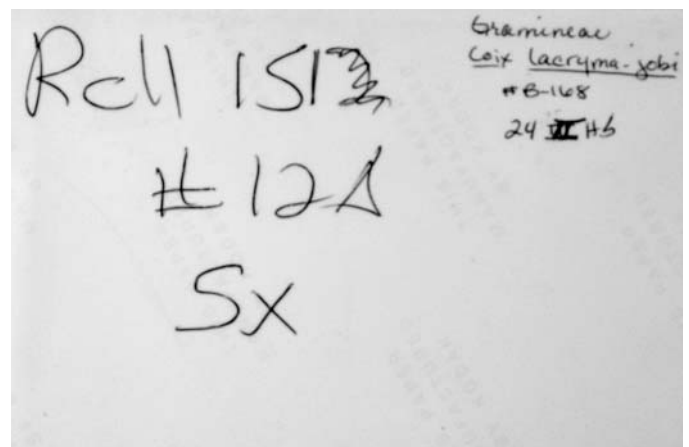
24IIHb photo1f.jpg



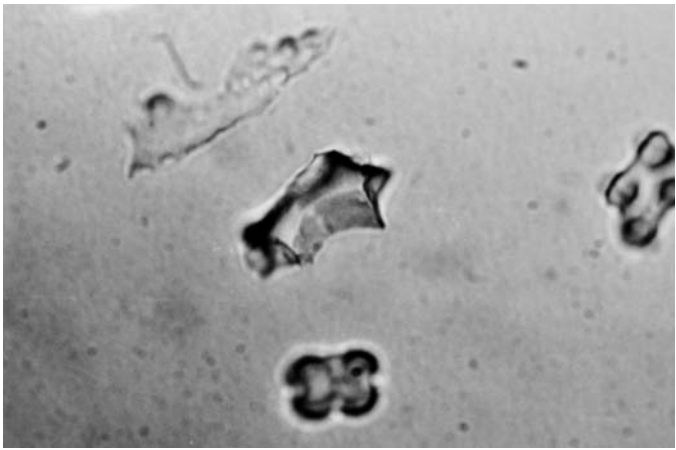
24IIHb photo1b.jpg



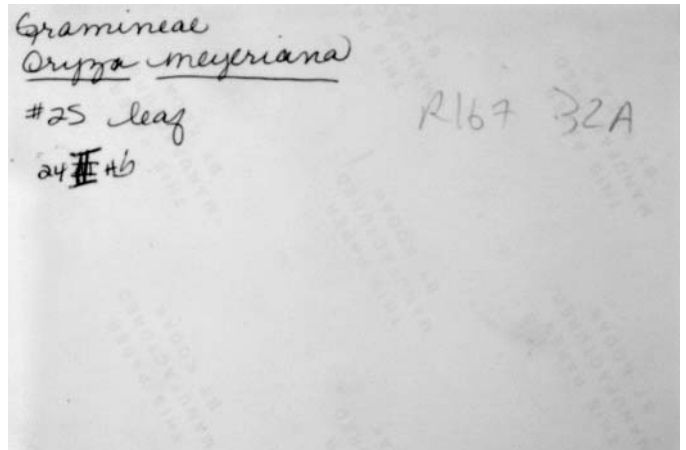
24IIHb photo2f.jpg



24IIHb photo2b.jpg



24IIHb photo3f.jpg



24IIHb photo3b.jpg