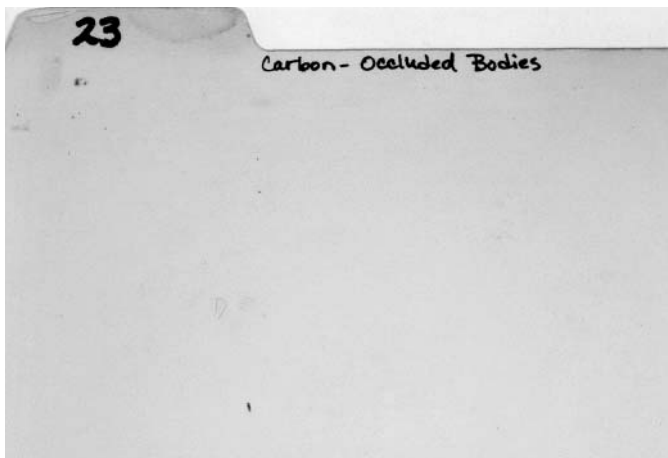


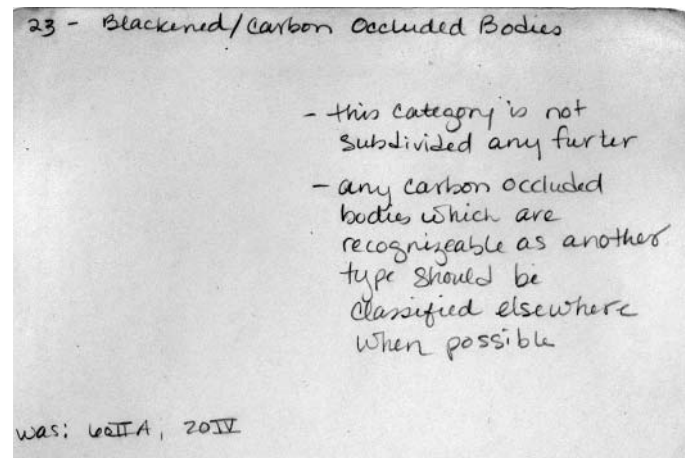
CATEGORY 23

Epidermal Non-Quadrilateral Carbon-Occluded Cells

(not further divided; includes occluded plates and cell walls of
other tissue origins, such as parenchyma)

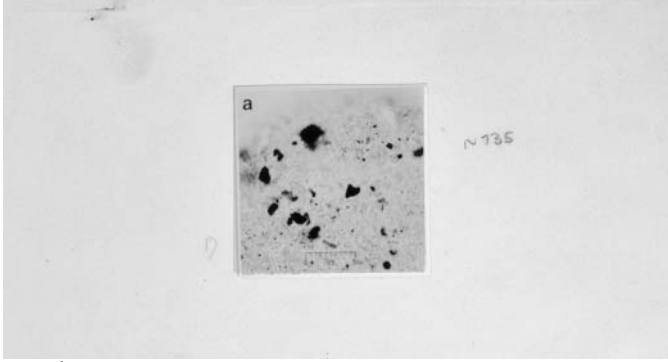


23 card1.jpg

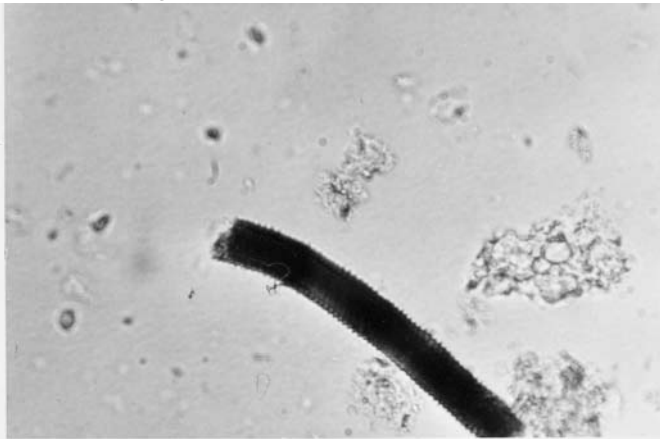


23 card2.jpg

23 Occluded plates, cell walls: Blackened bodies derived from epidermis or possibly parenchyma cell walls.

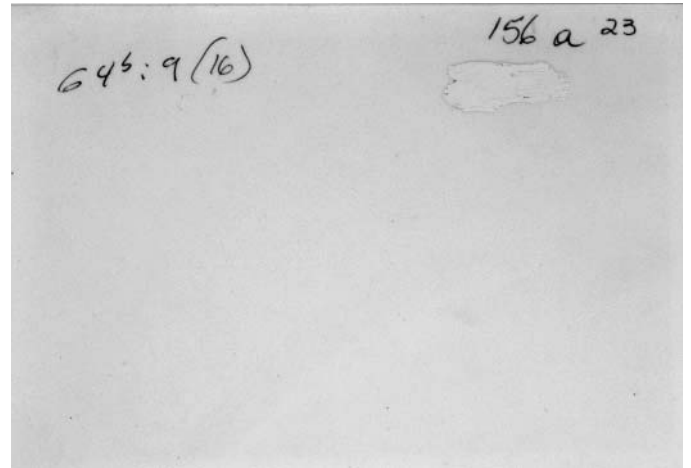


23 photo1.jpg

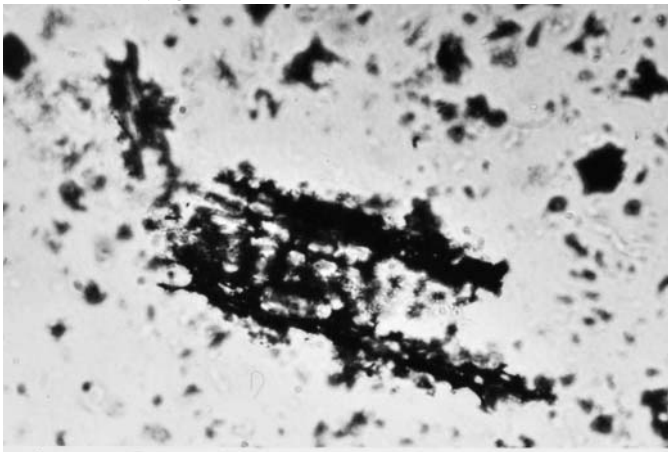


60-196

23 photo2f.jpg

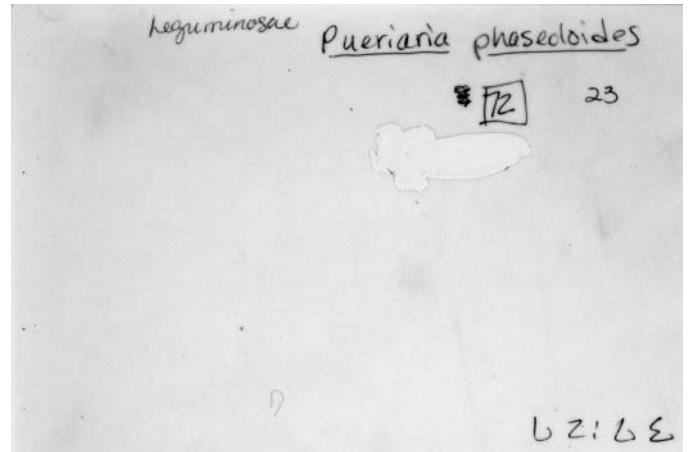


23 photo2b.jpg

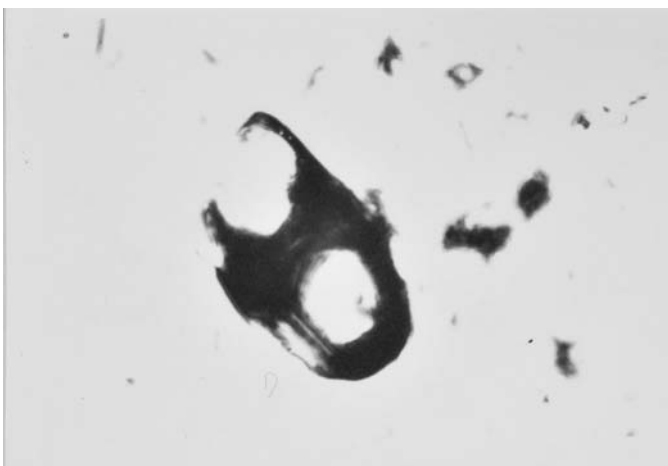


60-72

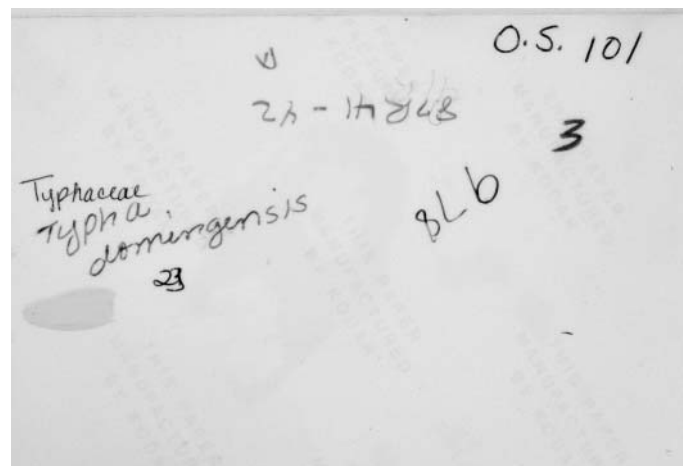
23 photo3f.jpg



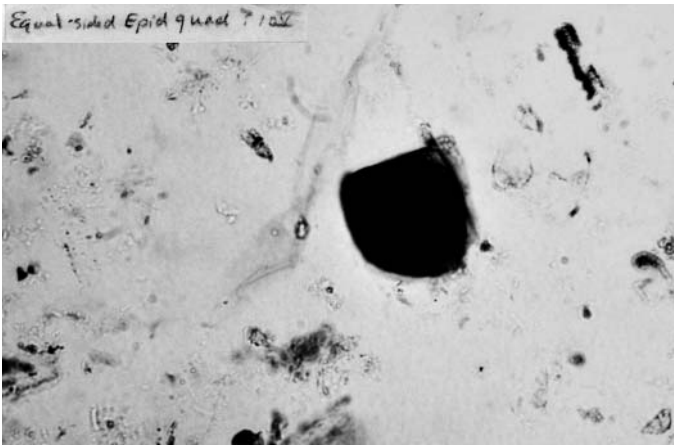
23 photo3b.jpg



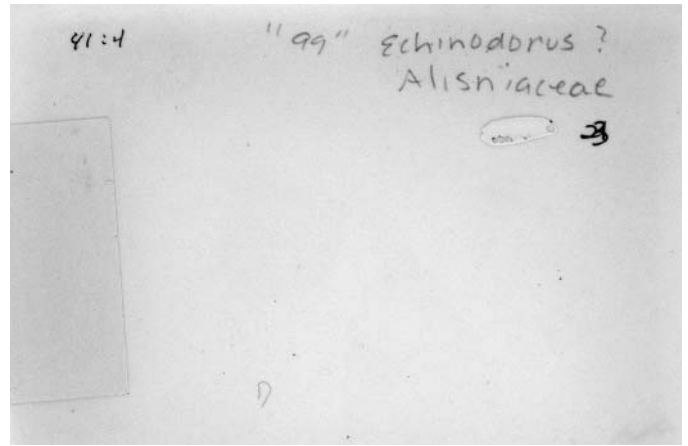
23 photo4f.jpg



23 photo4b.jpg



23 photo5f.jpg



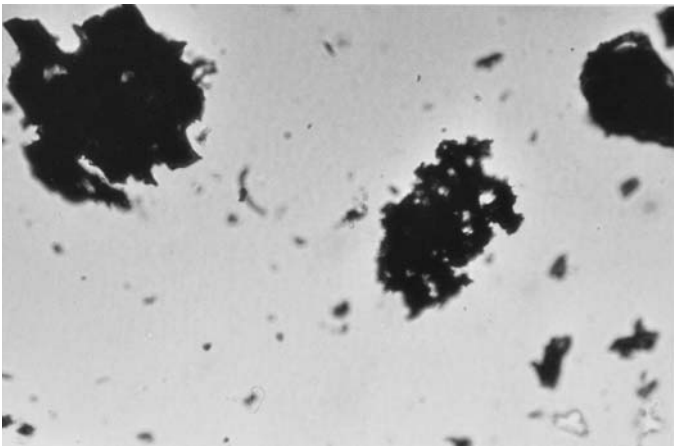
23 photo5b.jpg



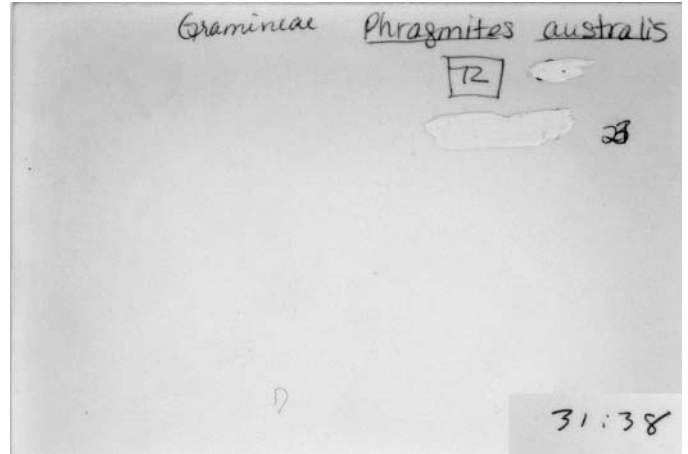
23 photo6f.jpg



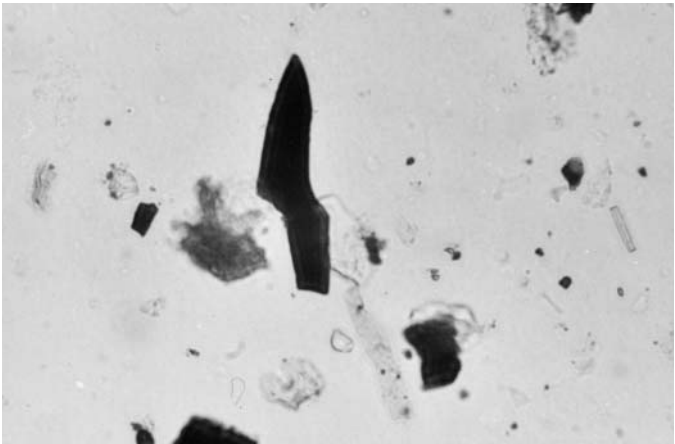
23 photo6b.jpg



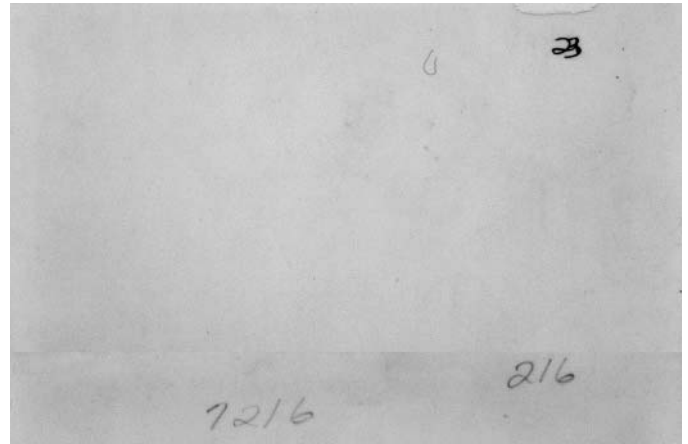
23 photo7f.jpg



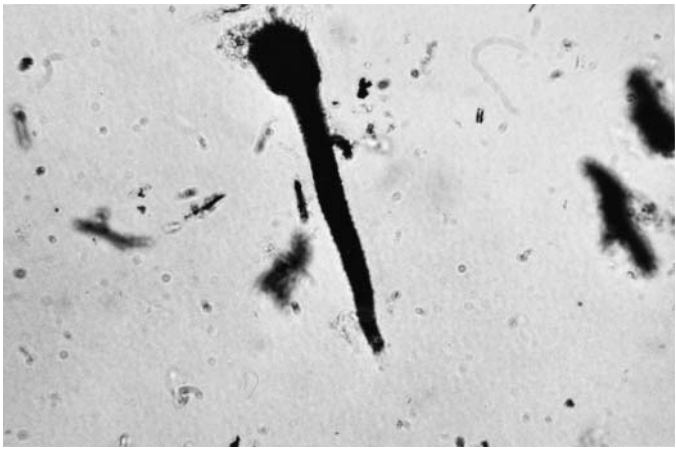
23 photo7b.jpg



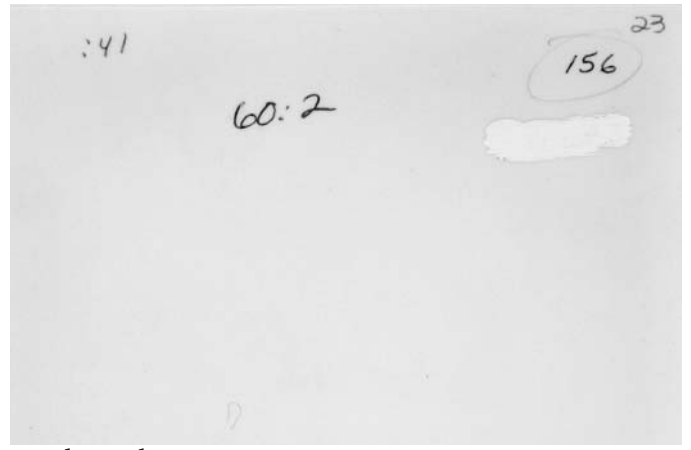
23 photo8f.jpg



23 photo8b.jpg



23 photo9f.jpg



23 photo9b.jpg