

CATEGORY 21

Epidermal Non-Quadrilateral Fragments

21I. smooth surface

21IA. Classic platelike

21IB. smooth with perforations

a. transparent

b. opaque (blackened) (Asteraceae, family level diagnostic)

21IC. Thick; platelike

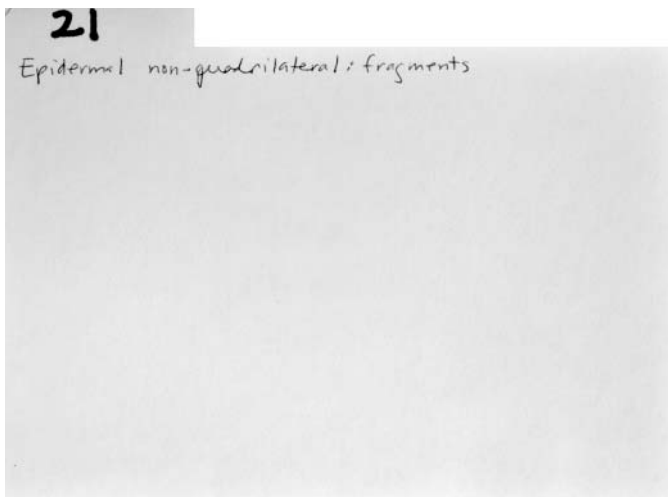
21II. Surface not smooth

21IIA. Grainy

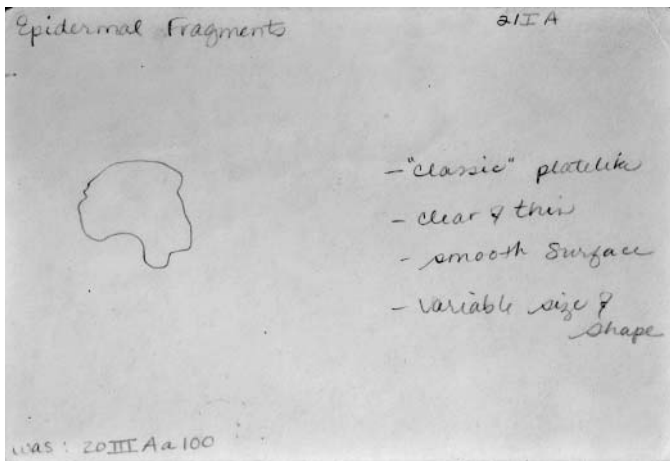
21IIB. Uneven

21IIC. Uneven with large perforations

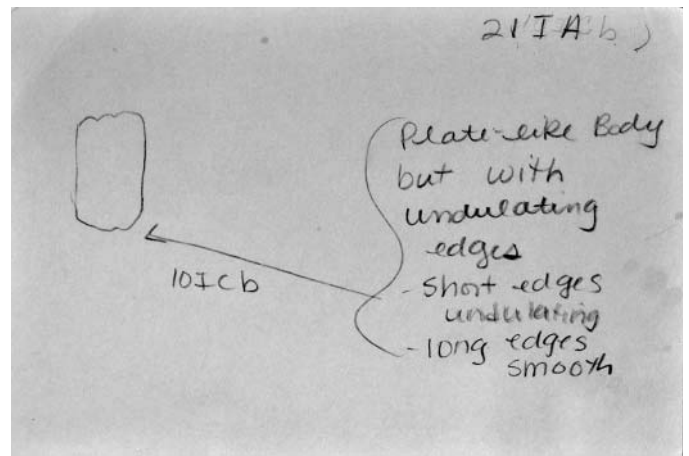
*No card in MU card file



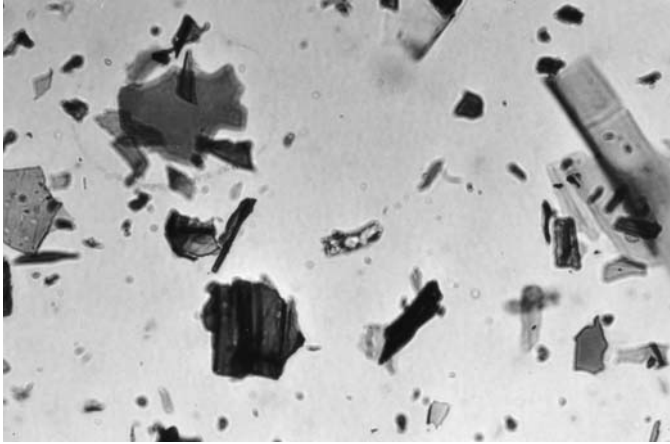
21 card1.jpg



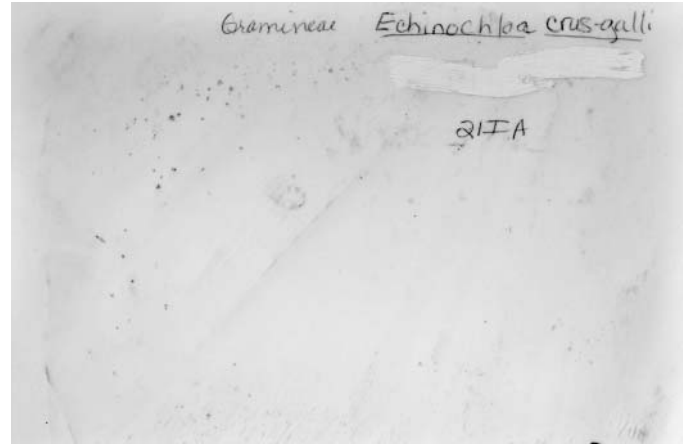
21IA card1.jpg



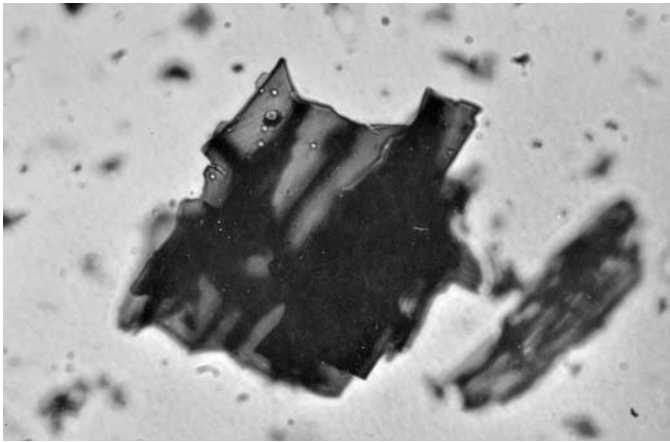
21IA card2.jpg



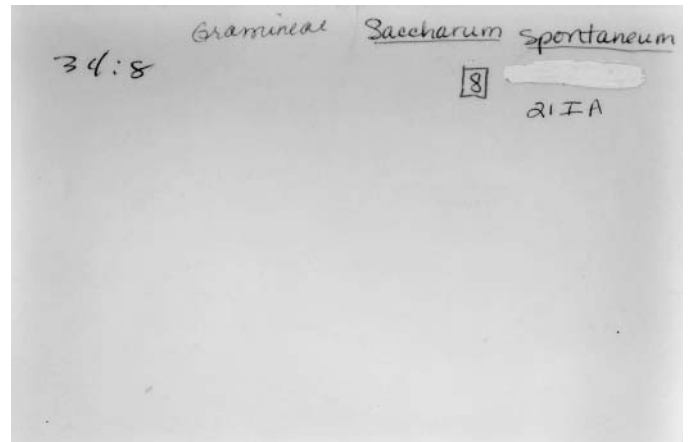
21IA photo1f.jpg



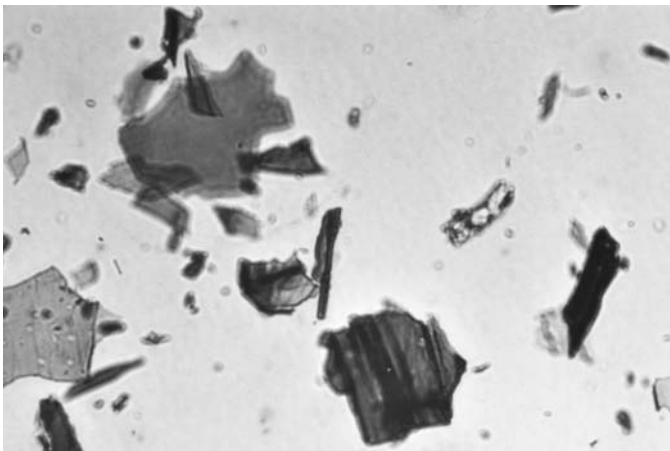
21IA photo1b.jpg



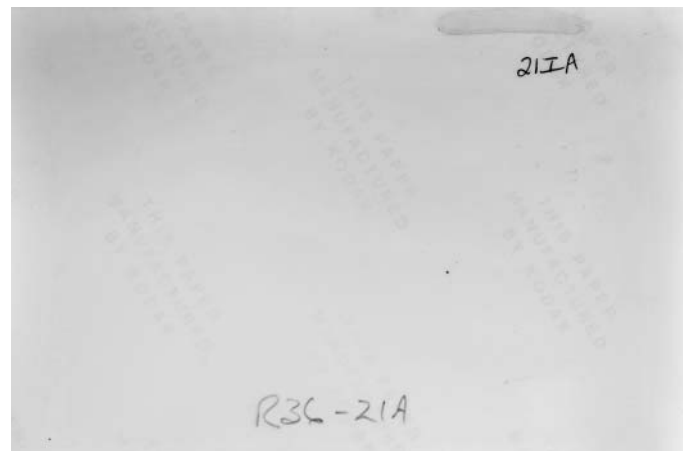
21IA photo2f.jpg



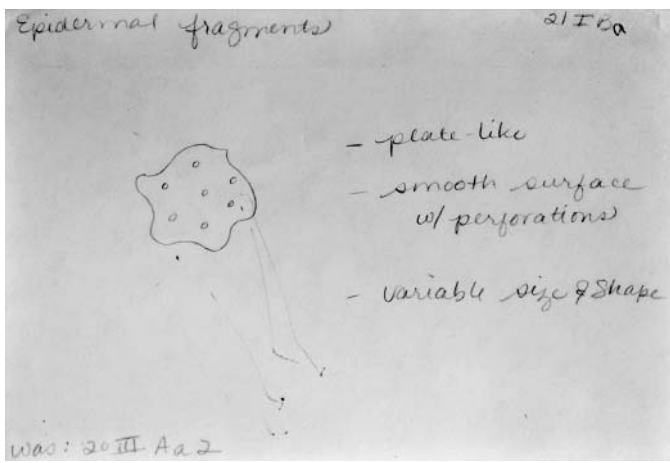
21IA photo2b.jpg



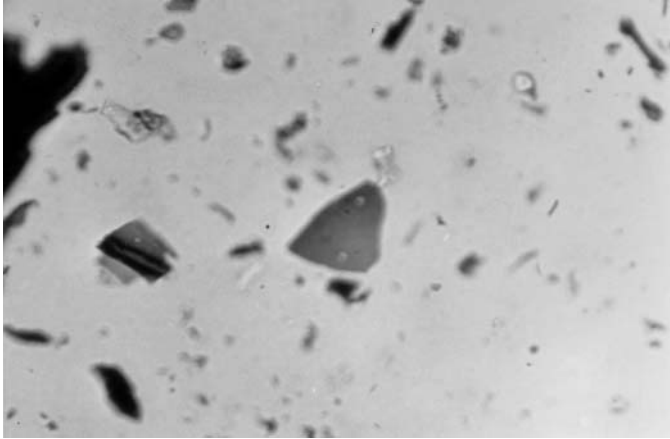
21IA photo3f.jpg



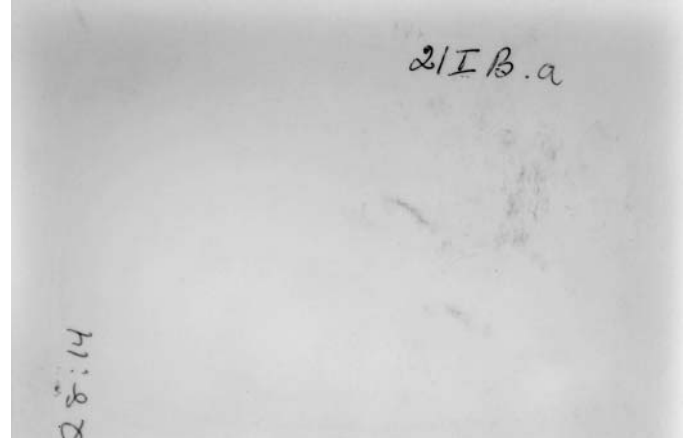
21IA photo3b.jpg



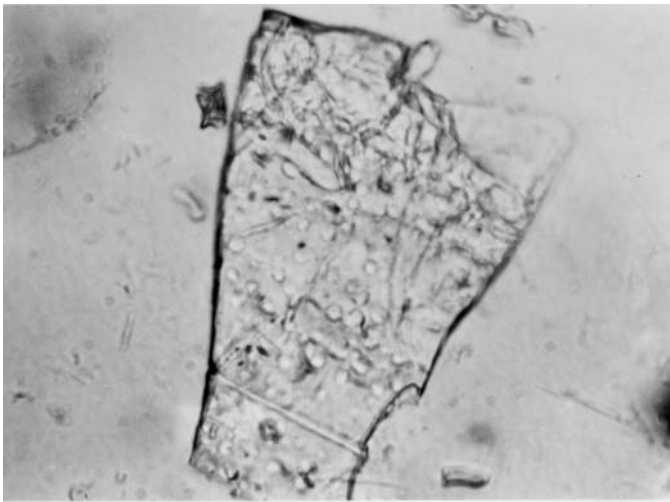
21IBa card1.jpg



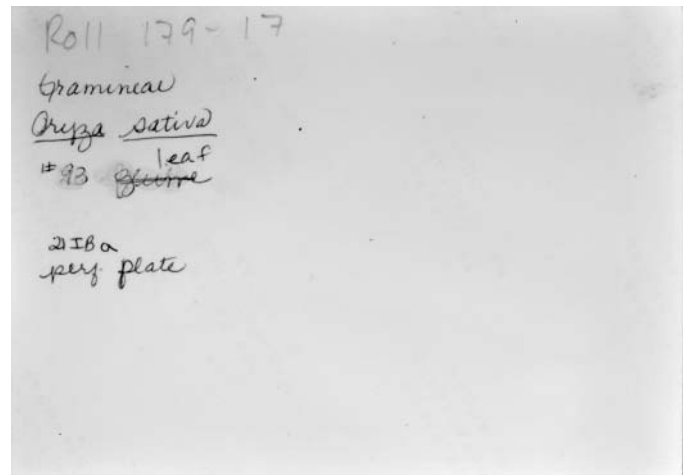
21IBa photo1f.jpg



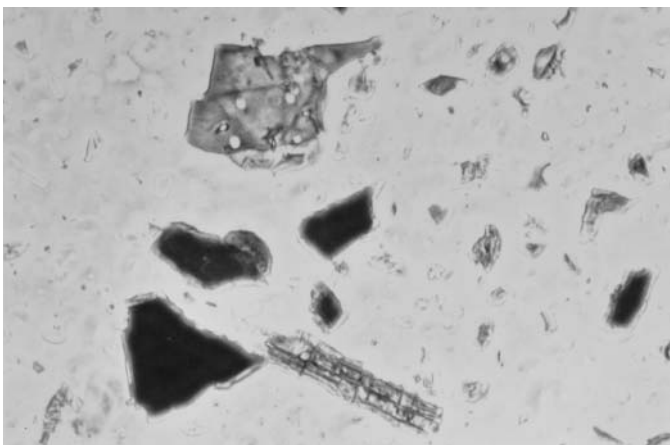
21IBa photo1b.jpg



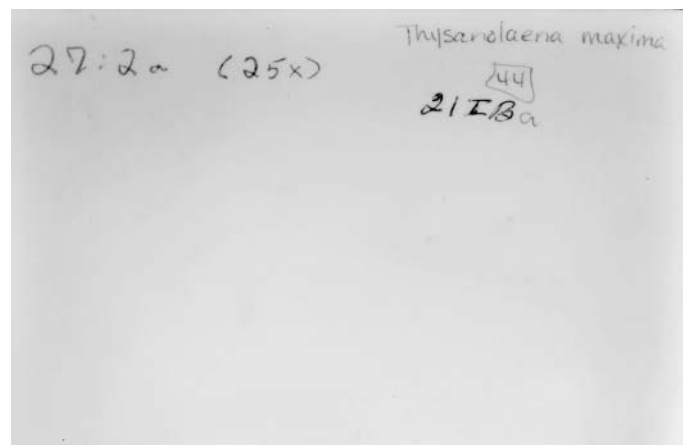
21IBa photo2f.jpg



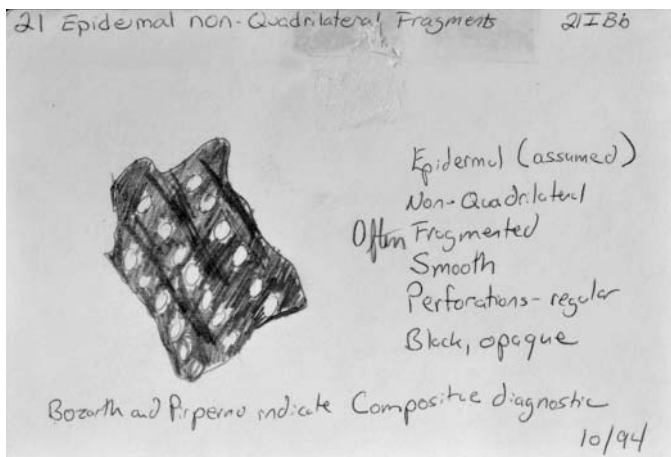
21IBa photo2b.jpg



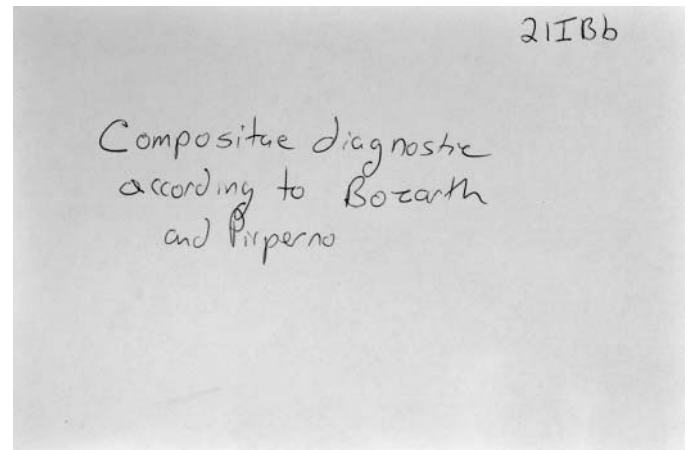
21IBa photo3f.jpg



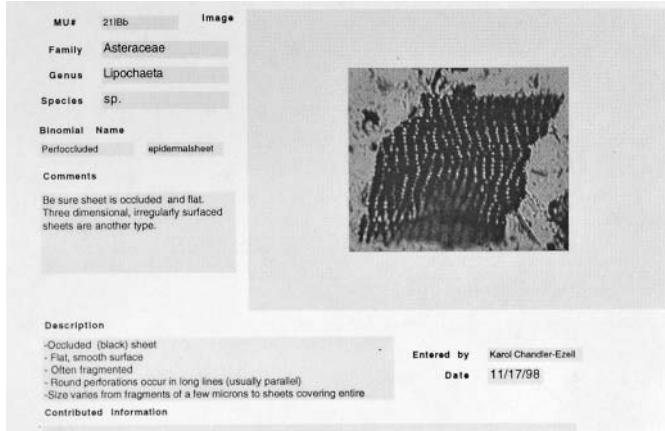
21IBa photo3b.jpg



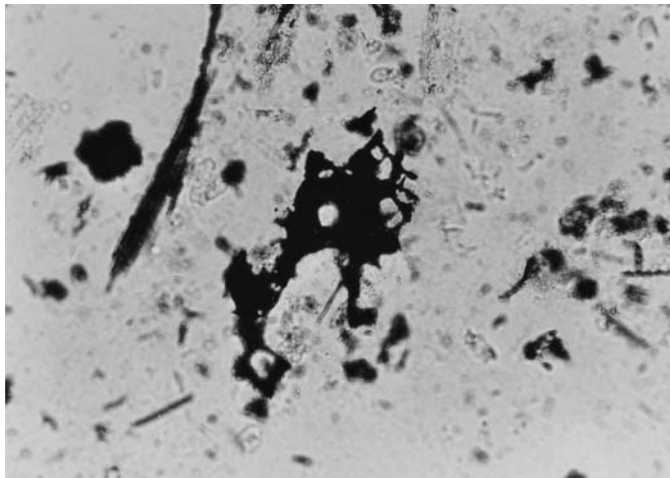
21IBb card1.jpg



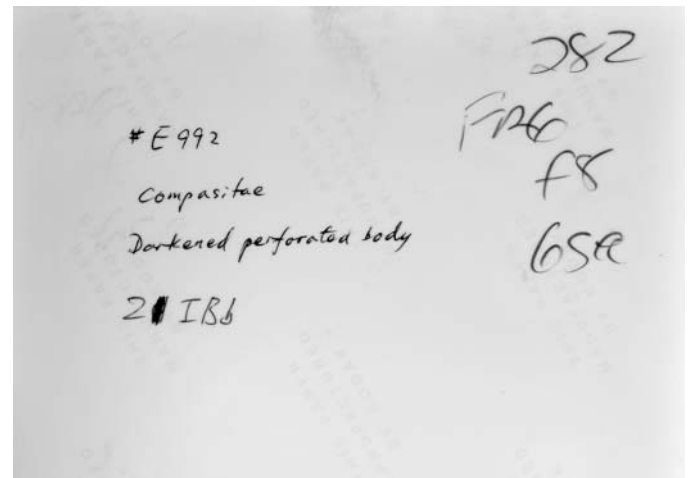
21IBb card2.jpg



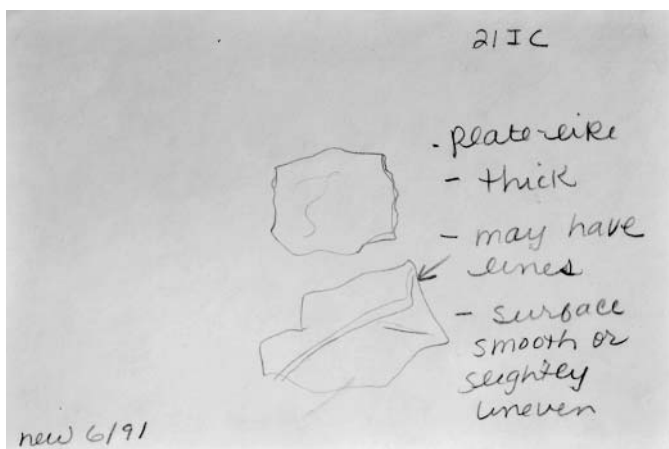
21IBb photo1f.jpg



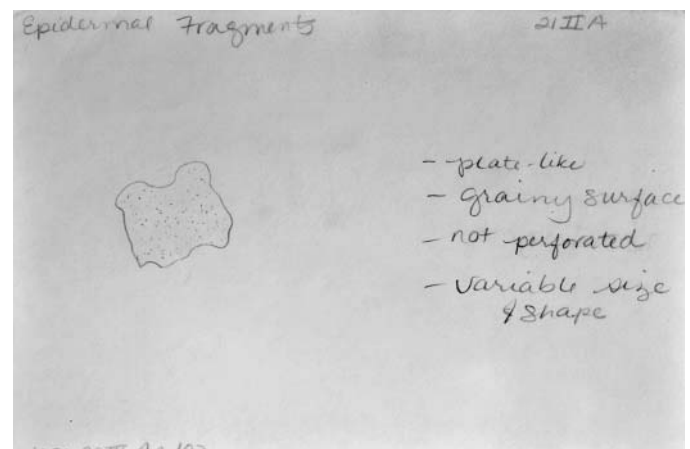
21IBb photo2f.jpg



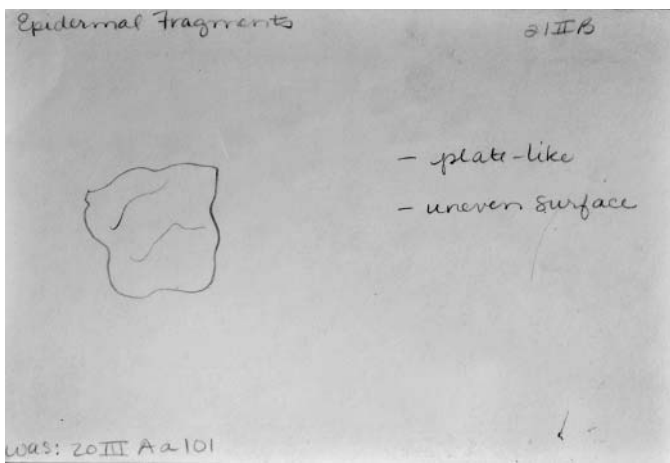
21IBb photo2b.jpg



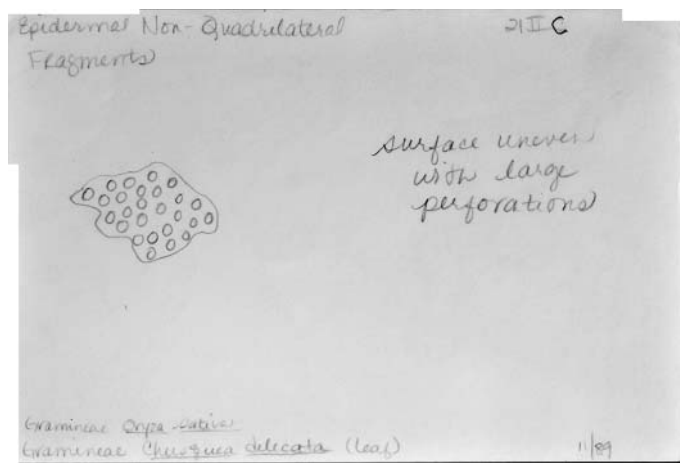
21IC card1.jpg



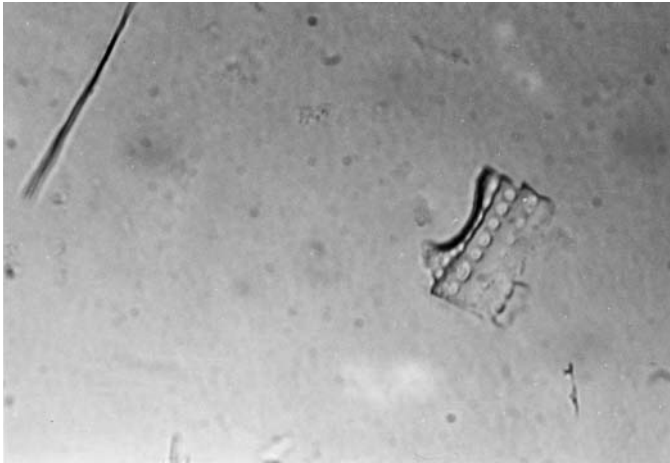
21IIA card1.jpg



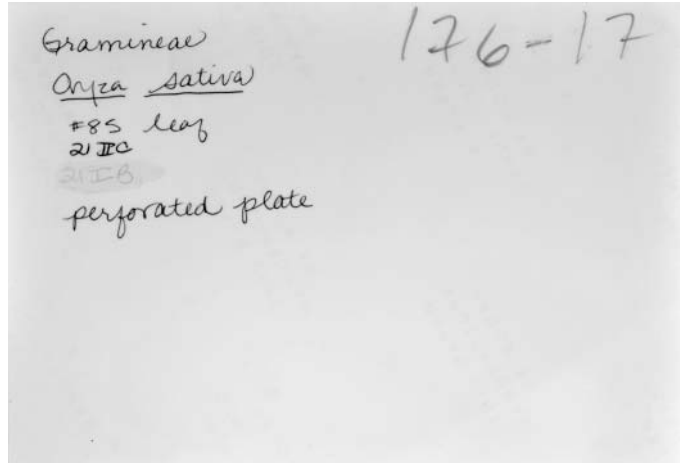
21IIB card1.jpg



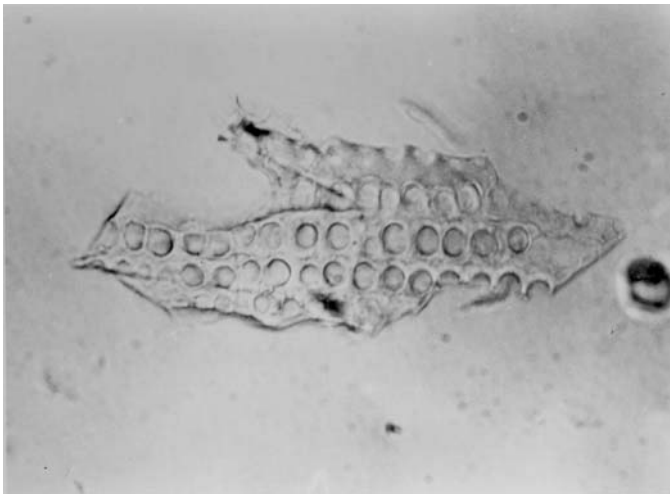
21IIC card1.jpg



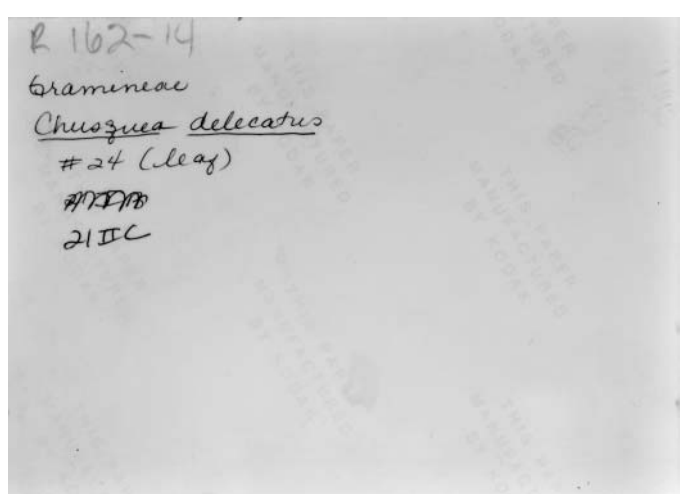
21IIC photo1f.jpg



21IIC photo1b.jpg



21IIC photo2f.jpg



21IIC photo2b.jpg