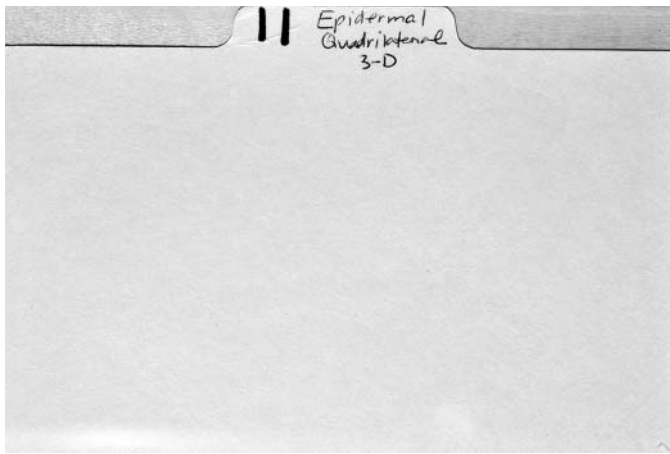


CATEGORY 11

Epidermal Quadrilateral Three-Dimensional

- 11I. all edges roughly same length
 - 11IA. Moderately undulating edges
 - a. bulbous projection in center (Fabaceae, *Inga densiflora*, genus level diagnostic)
 - b. no projection
 - 11IB. slightly undulating edges
 - a. smooth surface
 - 1. no projections
 - 2. long, thin, irregularly placed projections (not speculate; see 22 VIII)
 - b. uneven surface
 - 11II. Long (two to four times width)
 - 11IIA. Non-curvilinear
 - a. three to four edges smooth
 - 1. smooth surface
 - 00. variable in shape
 - 01. ends perfect circles, cylindrical in rotation; cross sections circular
 - 2. grainy/uneven surface
 - 3. one large projection
 - 4. top smaller than bottom; with spikes or facets
 - b. three edges smooth or undulating; one long edge serrated
 - 1. convex short edges
 - 2. surface with striations parallel to short ends
 - c. all edges undulating
 - 1. striated surface; “ribbed” appearance
 - 2. uneven surface
 - 3. smooth surface
 - 00. long edges slightly undulating
 - A. no projections
 - B. long, thin projections
 - C. regular, large, rounded projections
 - 01. long edges moderately undulating
 - 4. wrinkled surface
 - 5. irregular in shape; three edges straight or slightly undulating; one long edge moderately undulating; smooth surface
 - 6. irregular in shape; three edges straight or slightly undulating; one long edge moderately undulating; uneven surface
 - d. two long serrated edges
 - 11IIB. Curvilinear/bent
 - b. slightly sinuous [sic: no a]
 - c. two long edges concave; smooth surface
- 11III. Very long (greater than four times width)
 - 11IIIA. Smooth edges
 - 11IIIB. Three-sided; junction highly silicified
 - 11IIIC. Pointed projections; may have lumps
 - a. no lumps
 - b. small lump or lumps
 - c. one very large, prominent lump

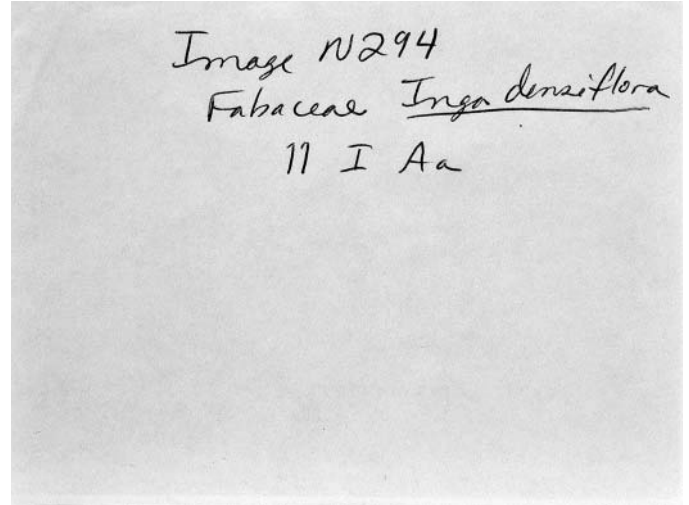
*No card in the MU card file



11 card1.jpg



11Aa photo1f.jpg



11Aa photo1b.jpg

Epidermal Quadrilateral 11 I Aa

MU# 111Aa Image N293

Family Fabaceae

Genus Inga

Species densiflora

Comments

0 25 50μ

Description
Epidermal quadrilateral, 3-dimensional. shape square to rectangular epidermal cell (length less than 2x width) with round/spherical bulb or projection in center of one flattened side. All surfaces smooth, but surface of rectangle and edges are upturned and undulating

Entered by Karol Chandler-Ezell
Date 6/27/2002

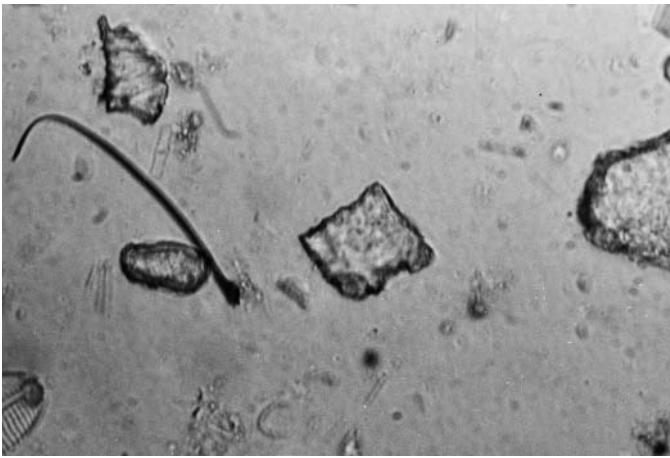
11Aa photo2f.jpg

Epidermal Quadrilateral 3-Dimensional [11 I A] Low nos 11 I A b 2/05

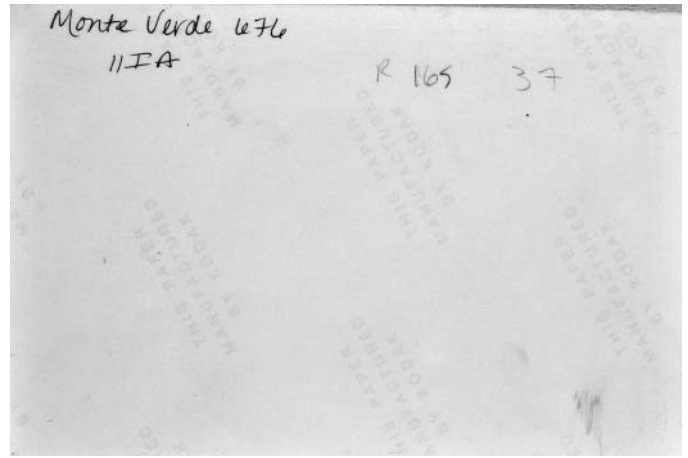
- roughly square
- moderately sinuous edges

was: 10 I I A a 1

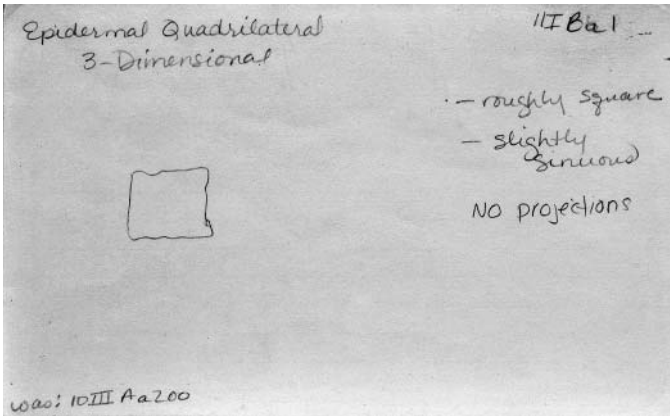
11IAb card1.jpg



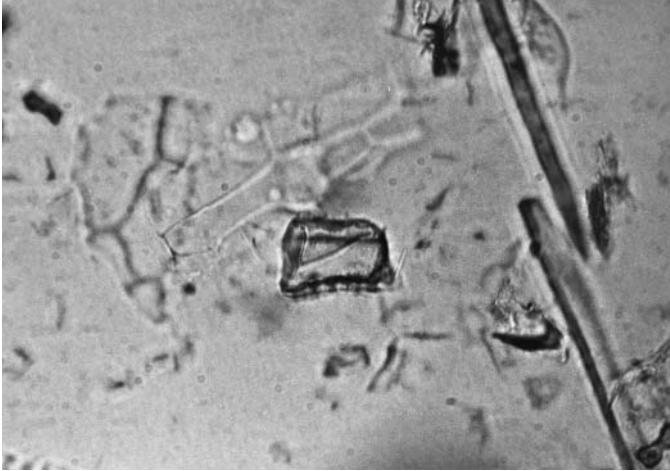
11IAb photo1f.jpg



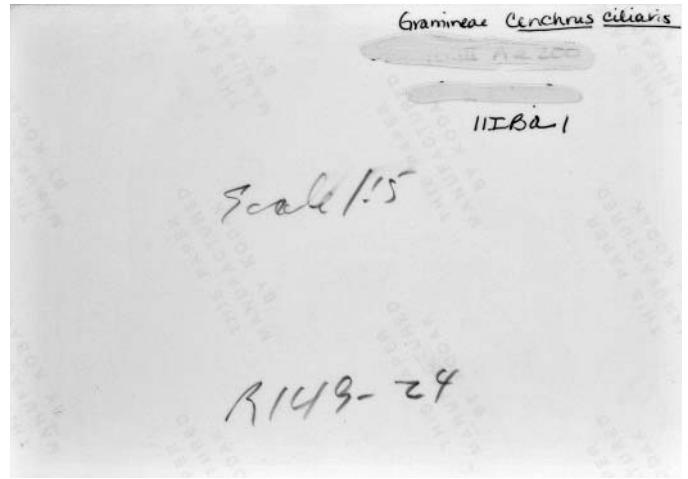
11IAb photo1b.jpg



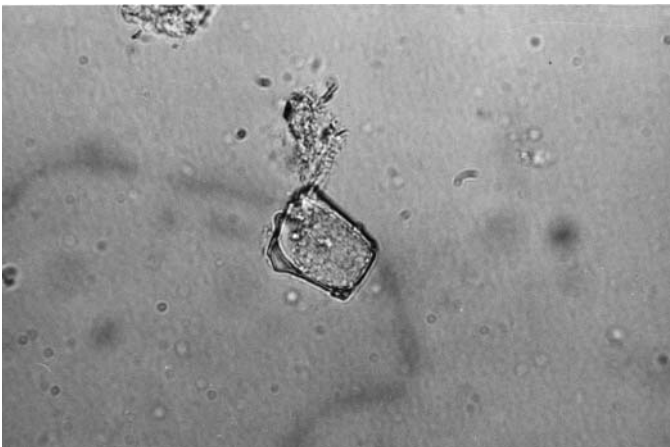
11IBa card1.jpg



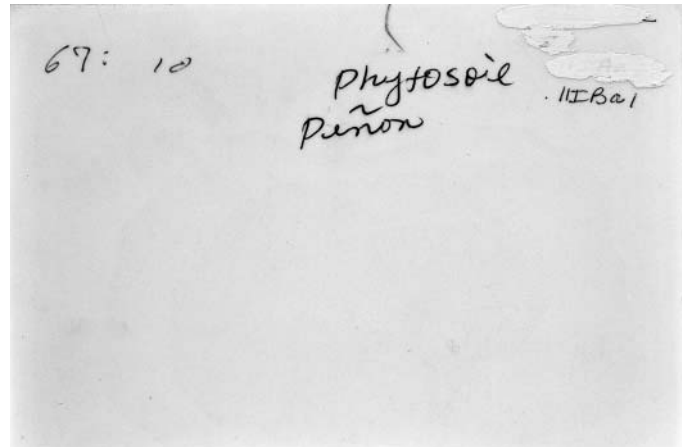
11IBa photo1f.jpg



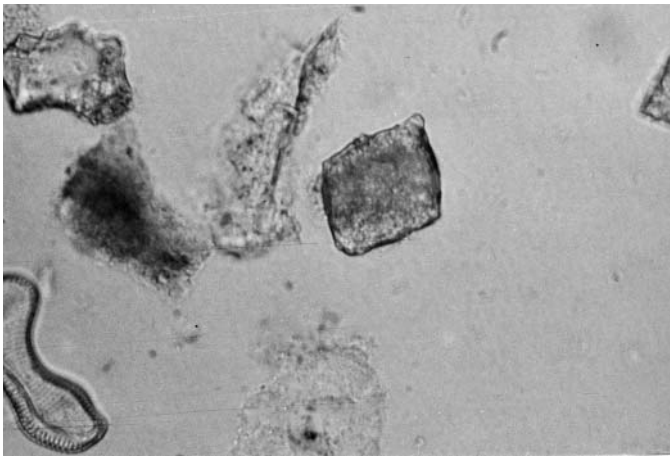
11IBa photo1b.jpg



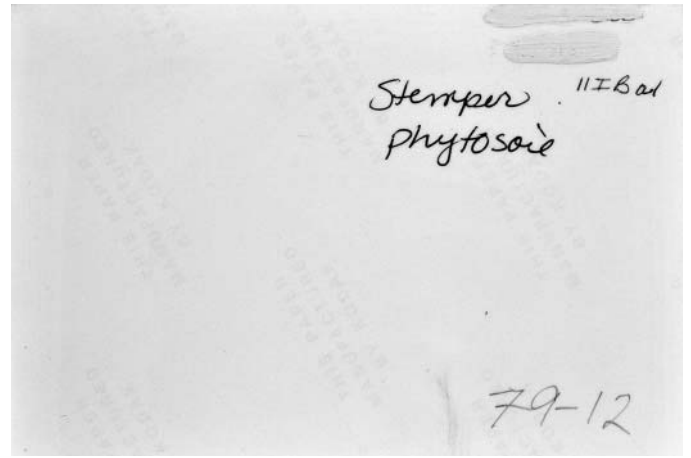
11IBa photo2f.jpg



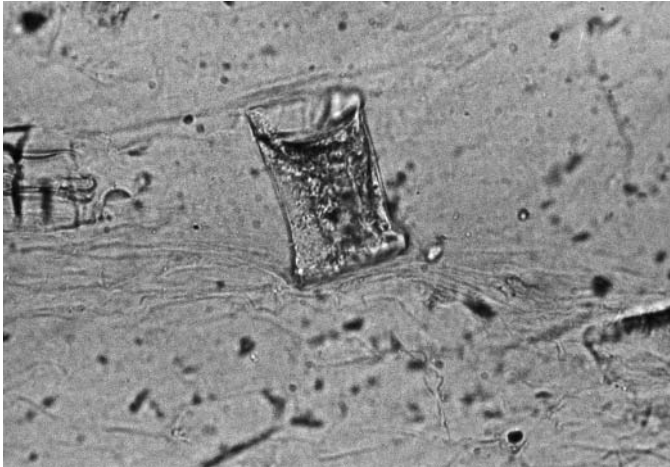
11IBa photo2b.jpg



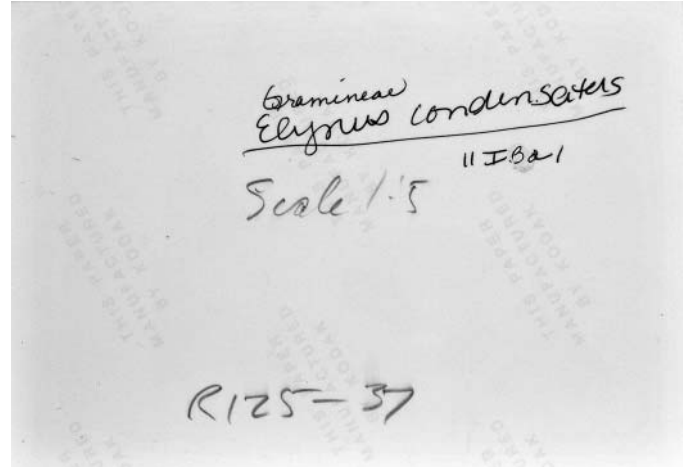
11IBa photo3f.jpg



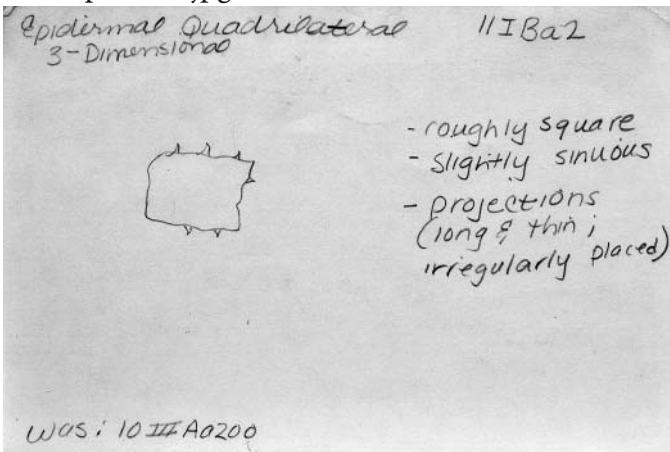
11IBa photo3b.jpg



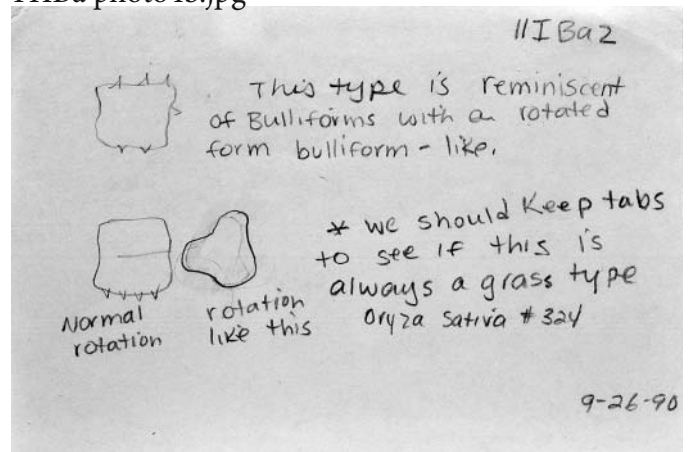
11IBa photo4f.jpg



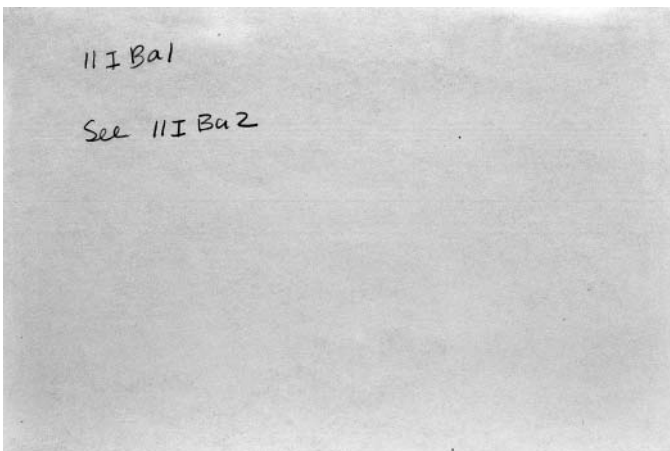
11IBa photo4b.jpg



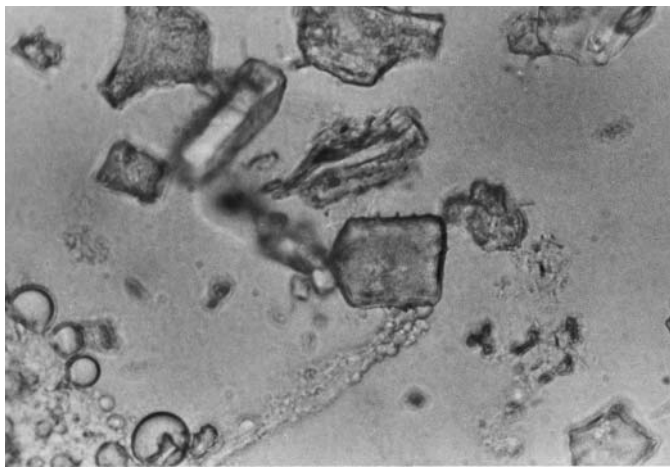
11IBa2 card1.jpg



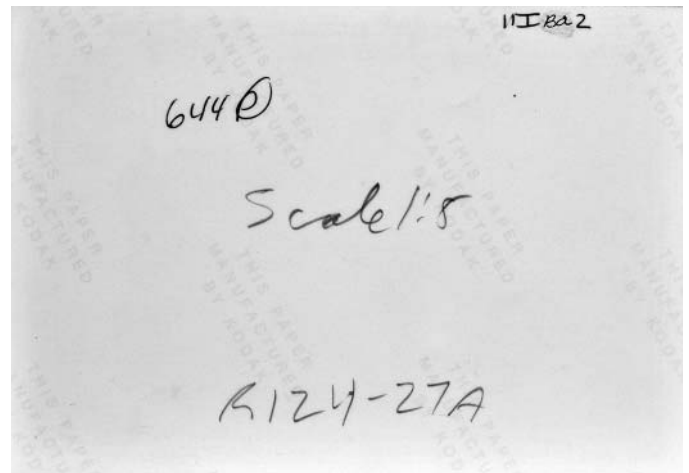
11IBa2 card2.jpg



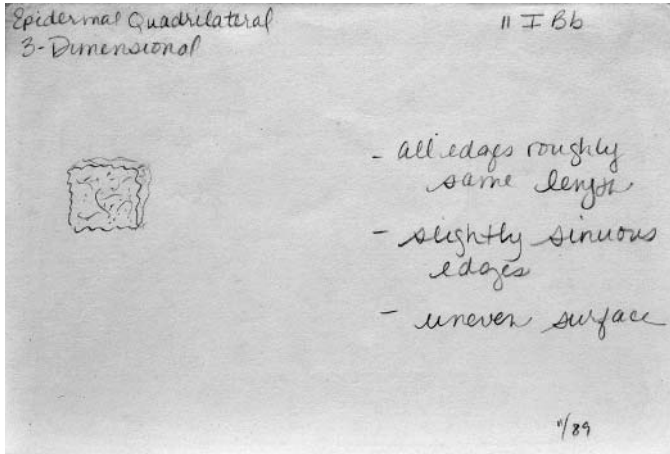
11IBa1 card1.jpg



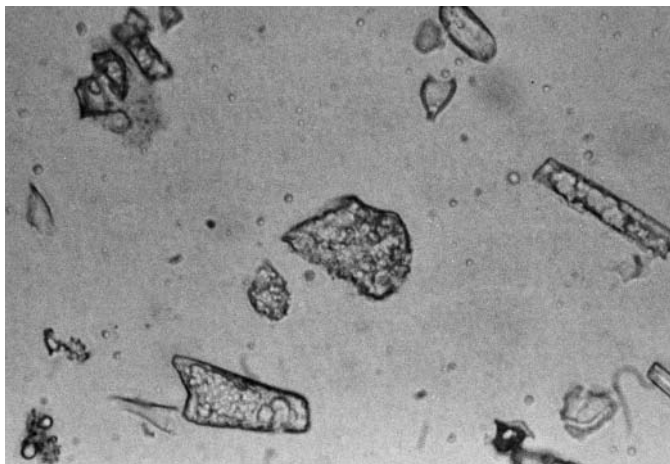
11IBa2 photo1f.jpg



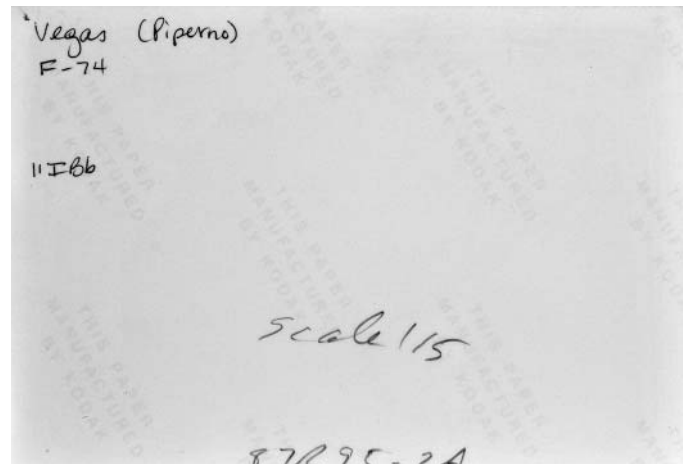
11IBa2 photo1b.jpg



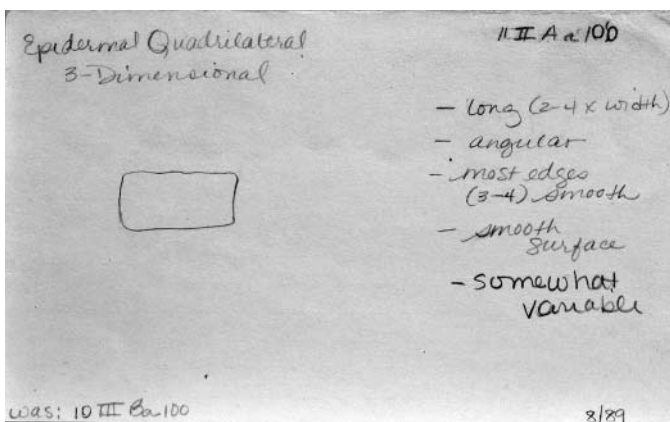
11IBb card1.jpg



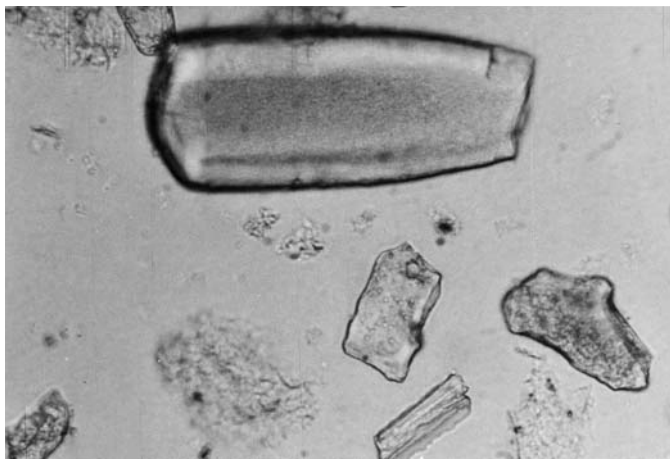
11IBb photo1f.jpg



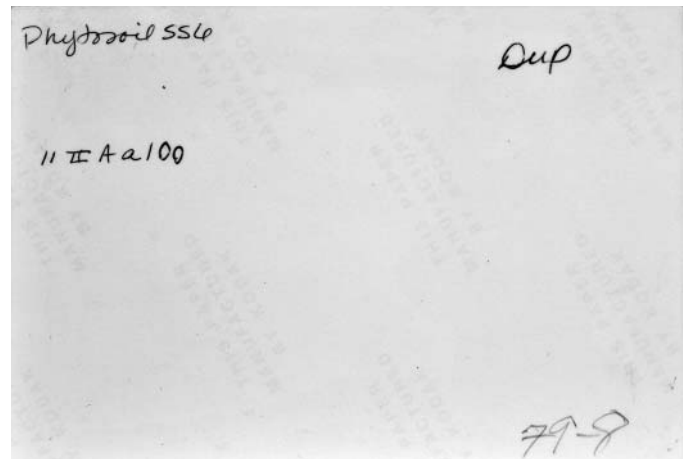
11IBb photo1b.jpg



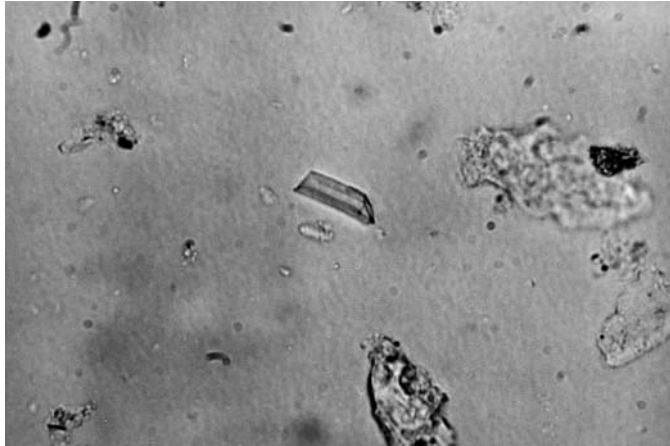
11IIAa100 card1.jpg



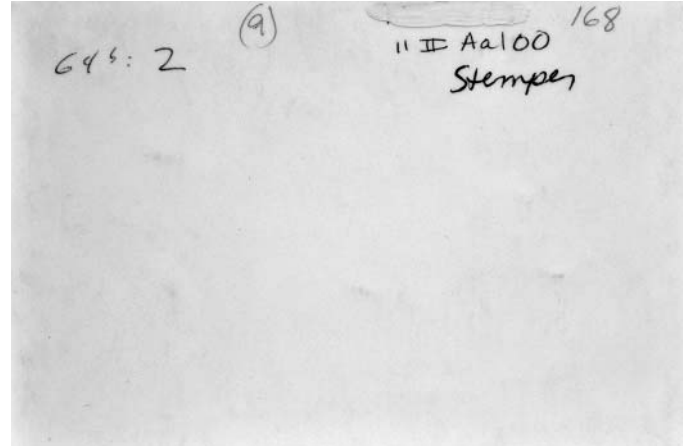
11IIAa100 photo1f.jpg



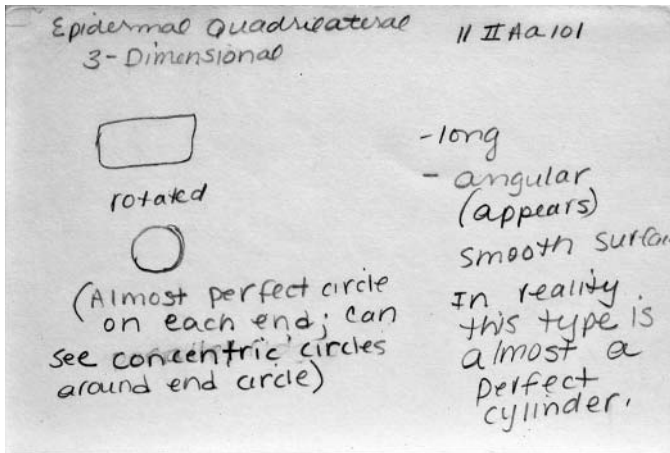
11IIAa100 photo1b.jpg



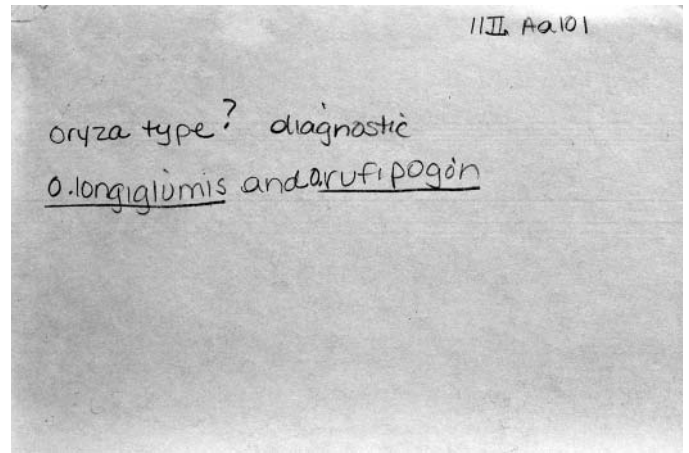
11IIAa100 photo2f.jpg



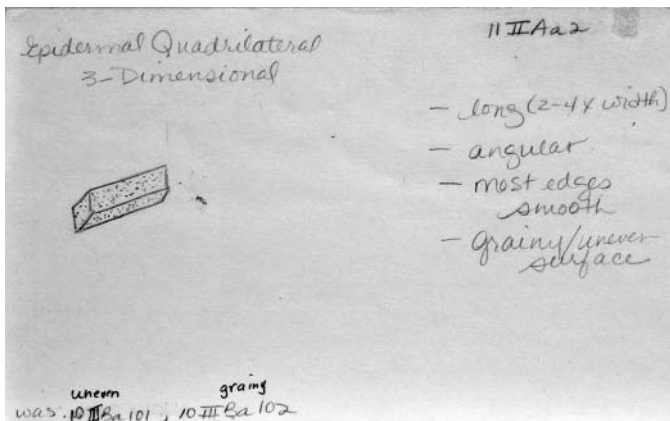
11IIAa100 photo2b.jpg



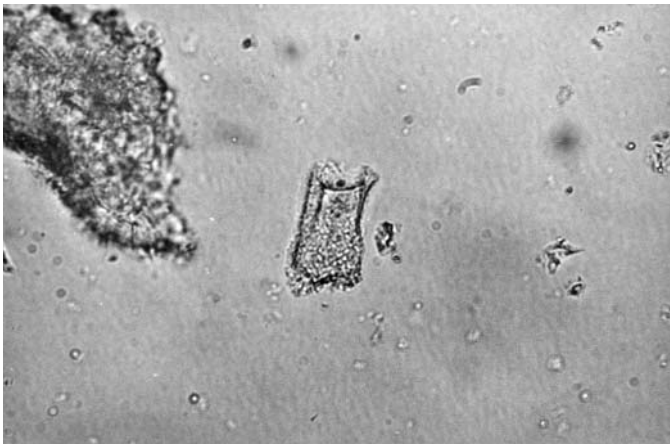
11IIAa101 card1.jpg



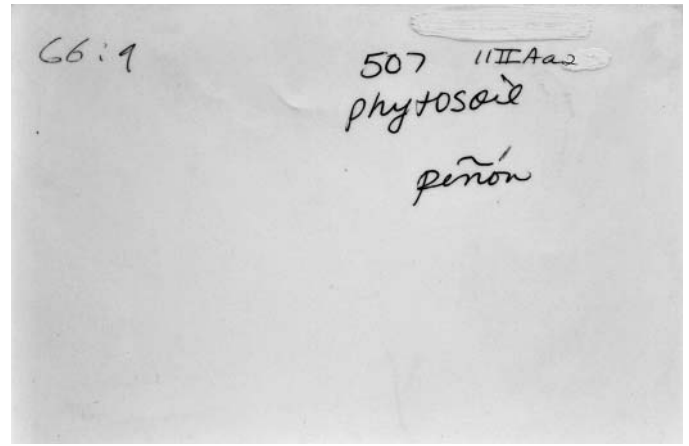
11IIAa101 card2.jpg



11IIAa2 card1.jpg



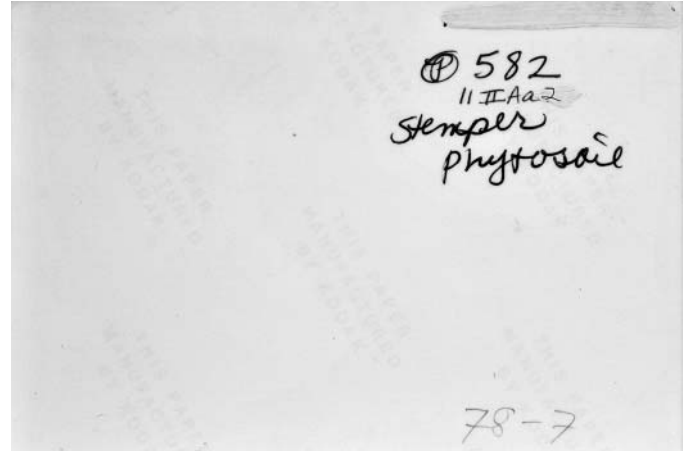
11IIAa2 photo1f.jpg



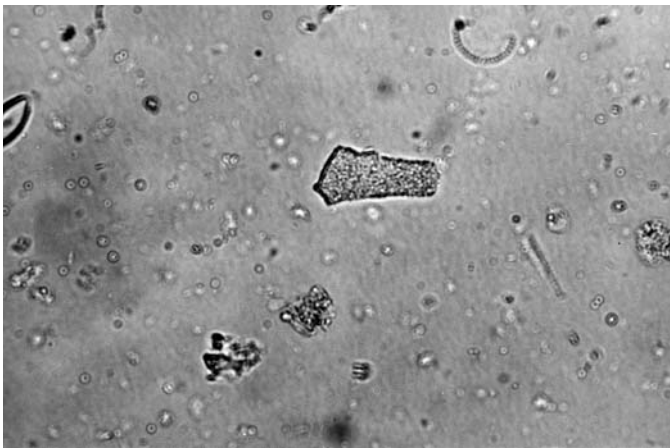
11IIAa2 photo1b.jpg



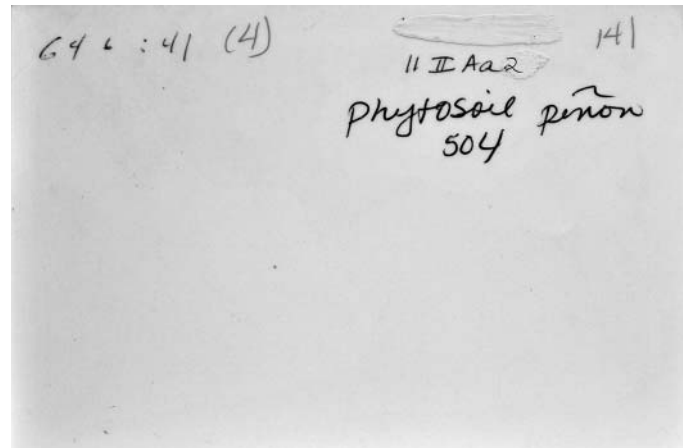
11IIAa2 photo2f.jpg



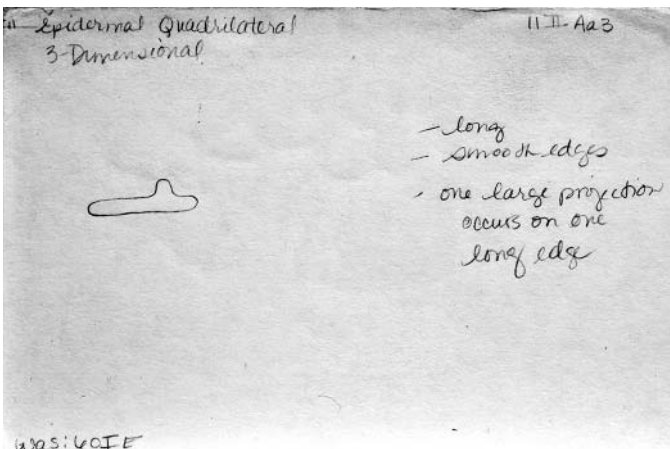
11IIAa2 photo2b.jpg



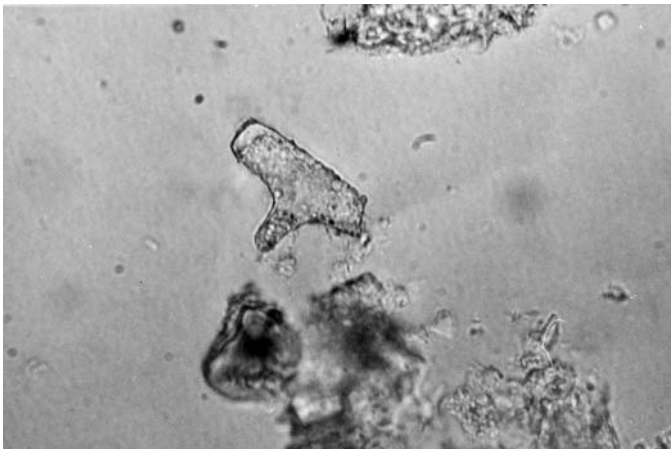
11IIAa2 photo3f.jpg



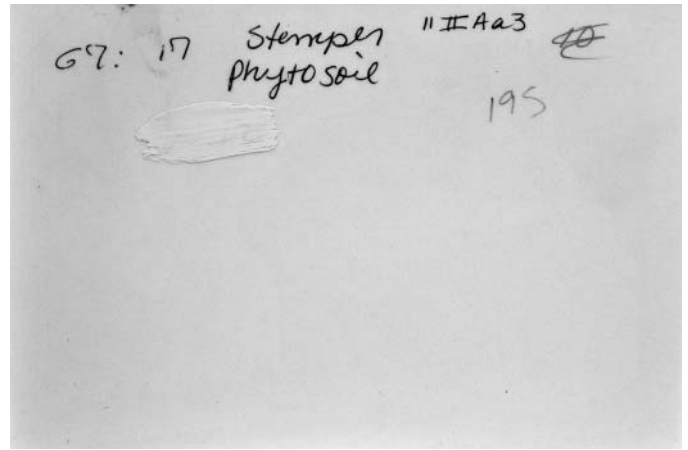
11IIAa2 photo3b.jpg



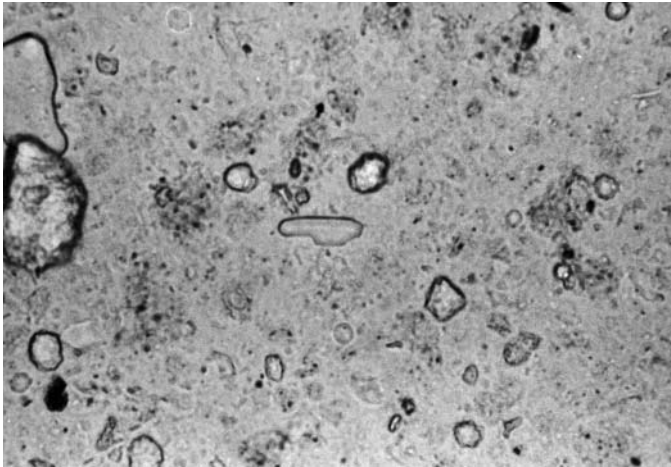
11IIAa3 card1.jpg



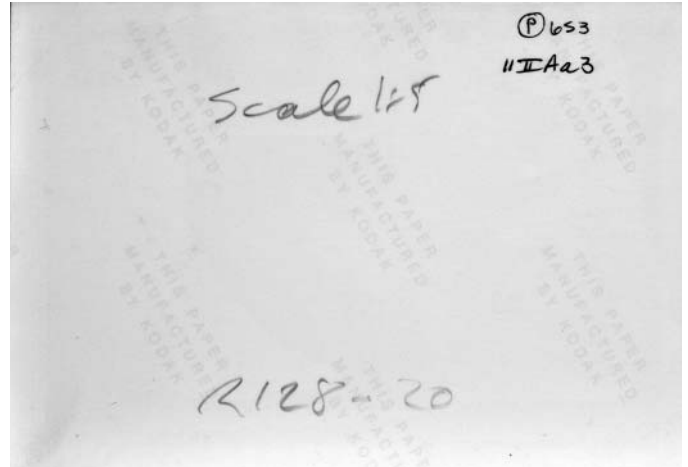
11IIIAa3 photo1f.jpg



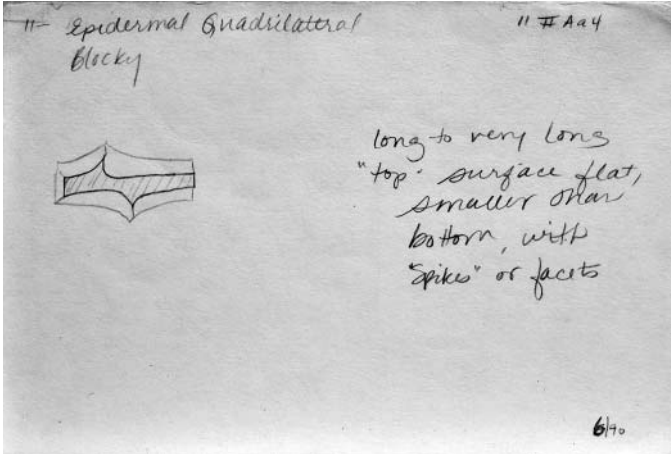
11IIIAa3 photo1b.jpg



11IIIAa3 photo2f.jpg



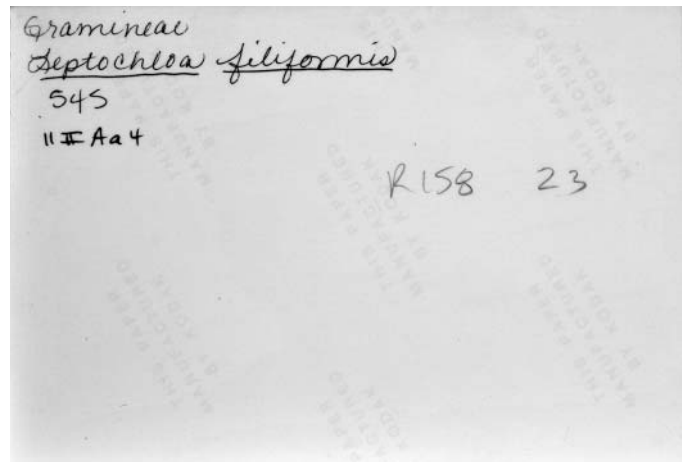
11IIIAa3 photo2b.jpg



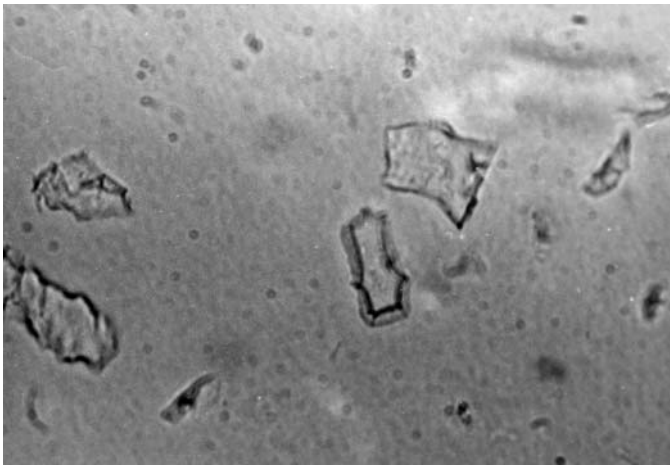
11IIIAa4 card1.jpg



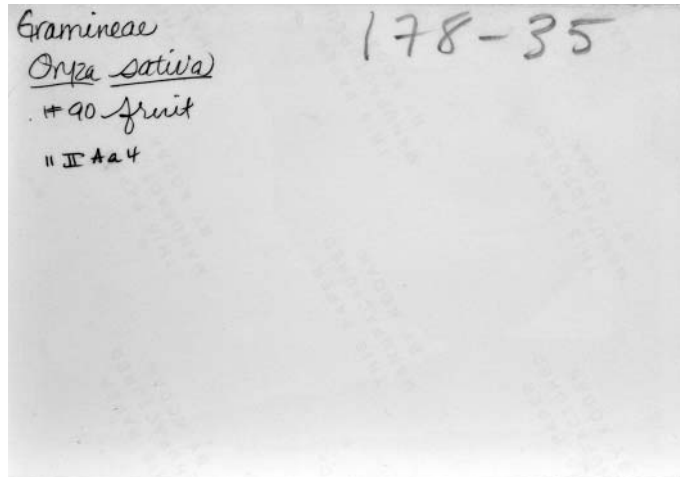
11IIIAa4 photo1f.jpg



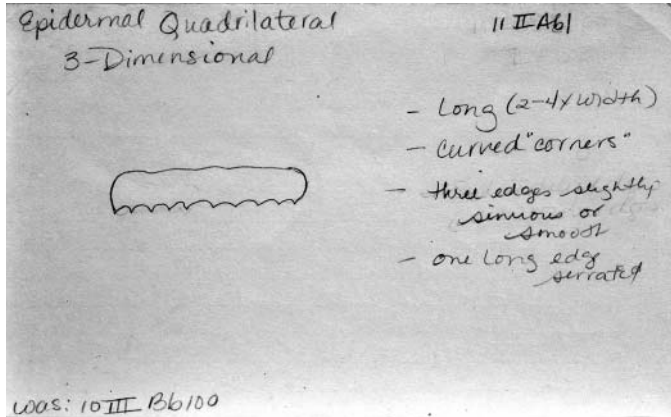
11IIIAa4 photo1b.jpg



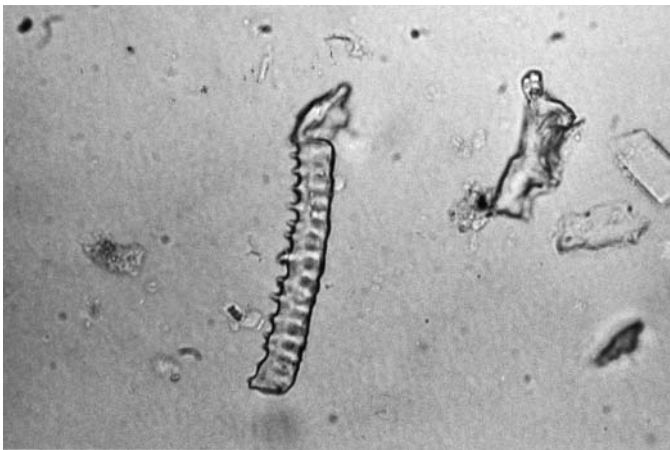
11IIIAa4 photo2f.jpg



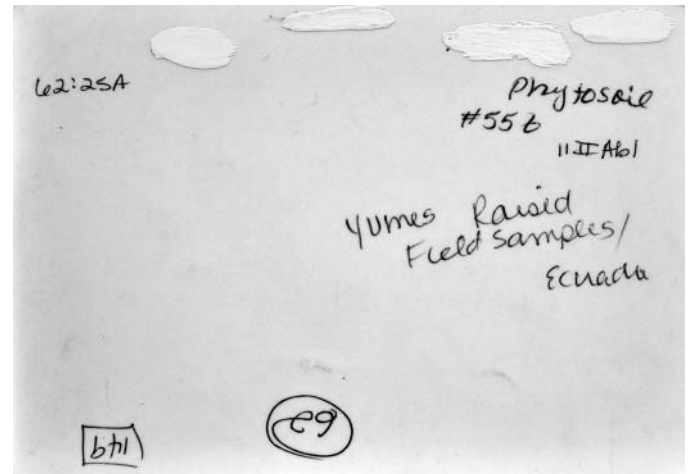
11IIIAa4 photo2b.jpg



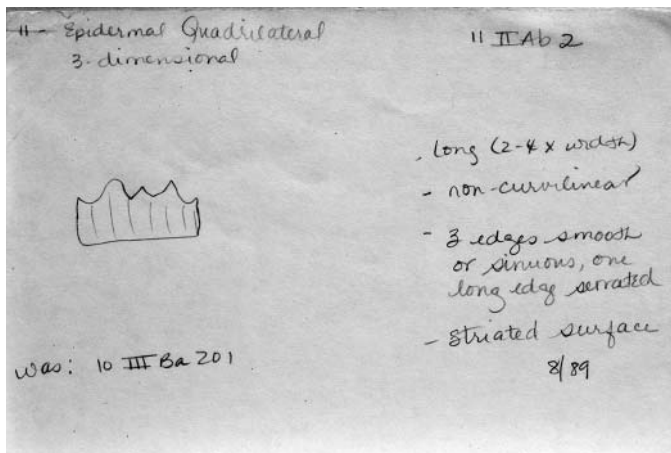
11IIAb1 card1.jpg



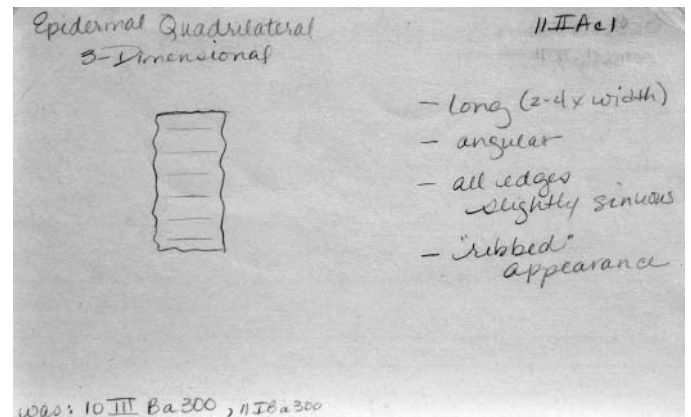
11IIAb1 photo1f.jpg



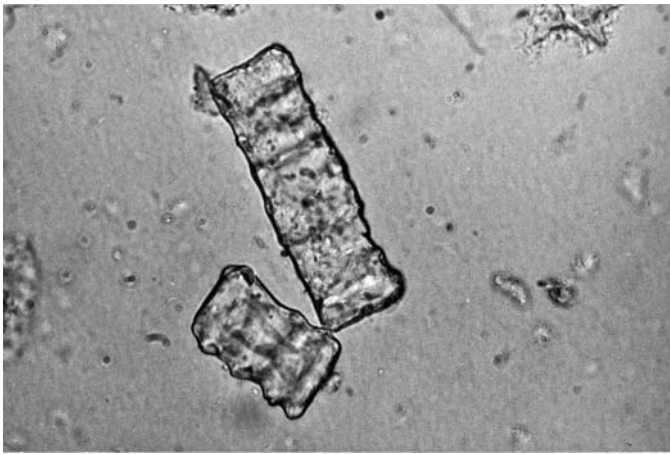
11IIAb1 photo1b.jpg



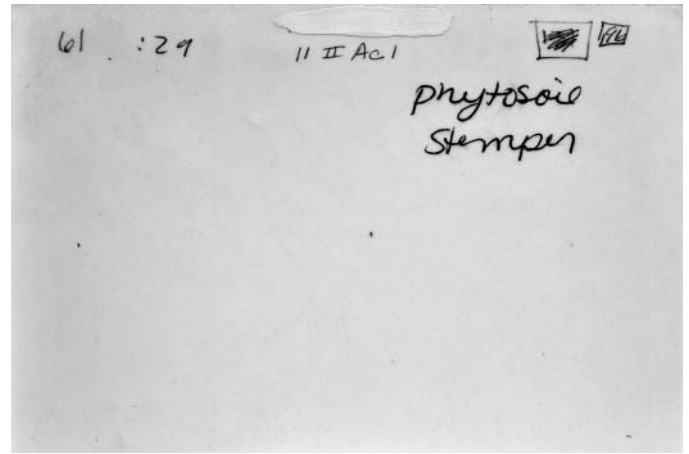
11IIAb2 card1.jpg



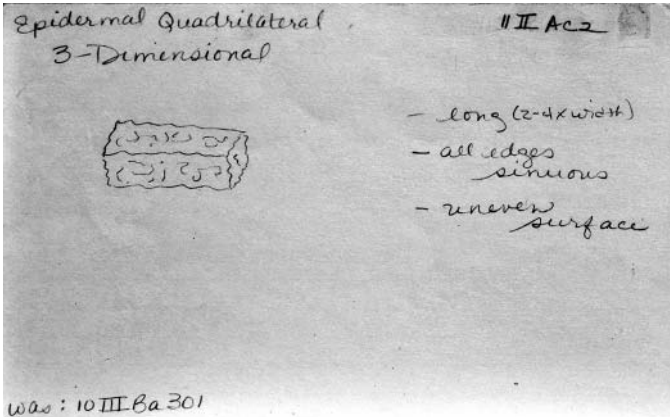
11IIAc1 card1.jpg



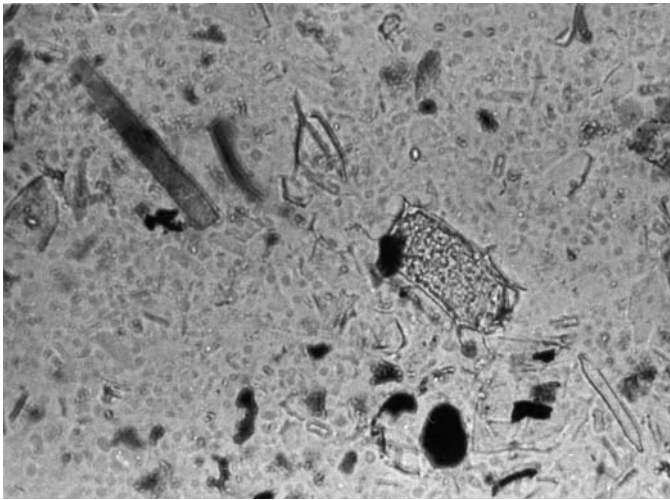
11IIIAc1 photo1f.jpg



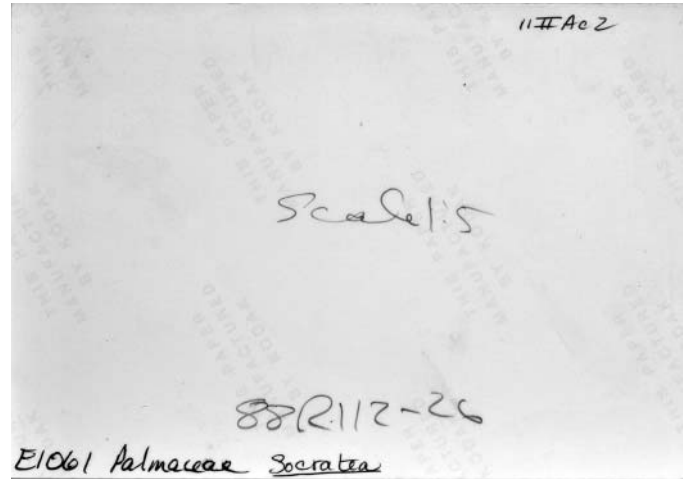
11IIIAc1 photo1b.jpg



11IIIAc2 card1.jpg



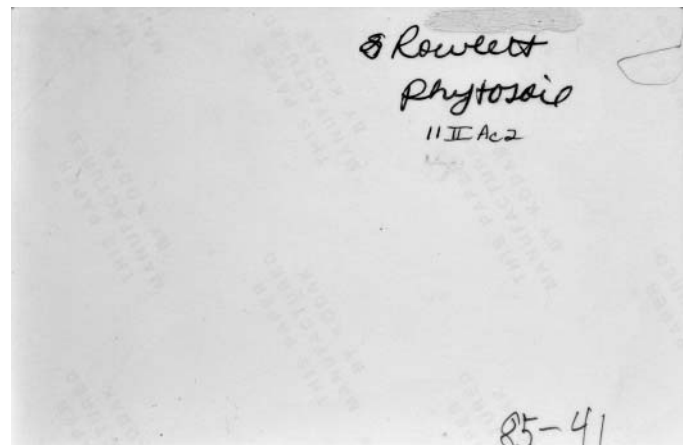
11IIIAc2 photo1f.jpg



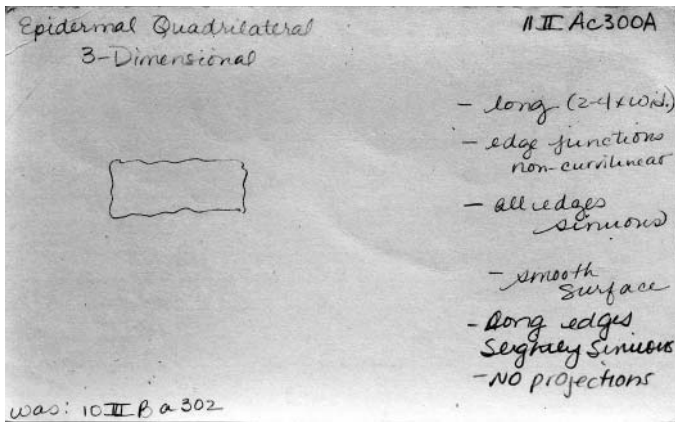
E1061 Palmaceae *Socratea*
11IIIAc2 photo1b.jpg



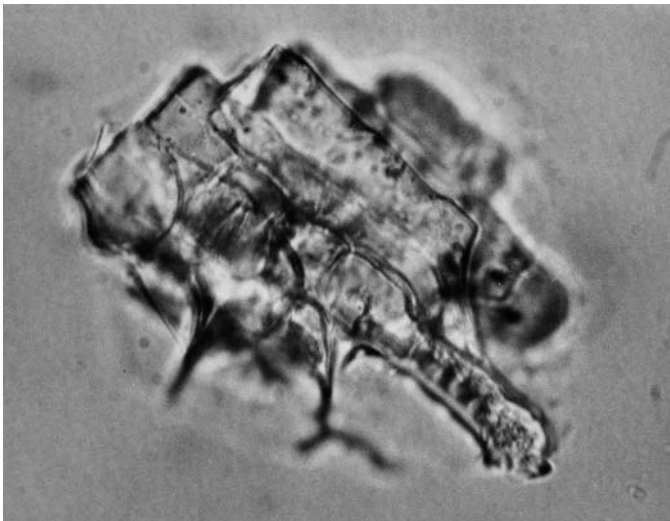
11IIIAc2 photo2f.jpg



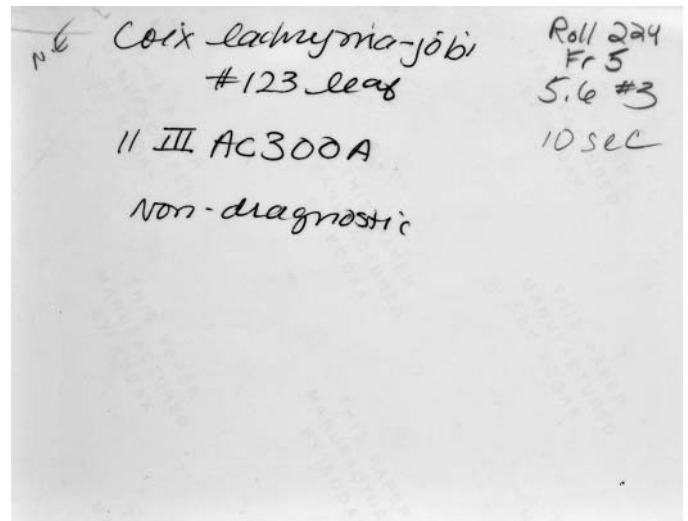
11IIIAc2 photo2b.jpg



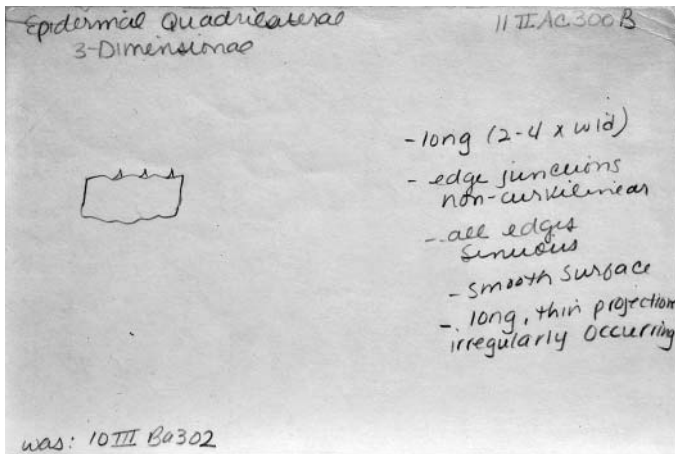
11IIAc300A card1.jpg



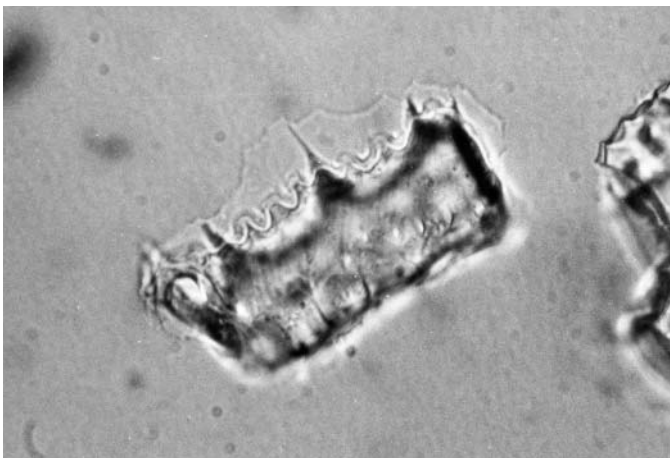
11IIAc300A photo1f.jpg



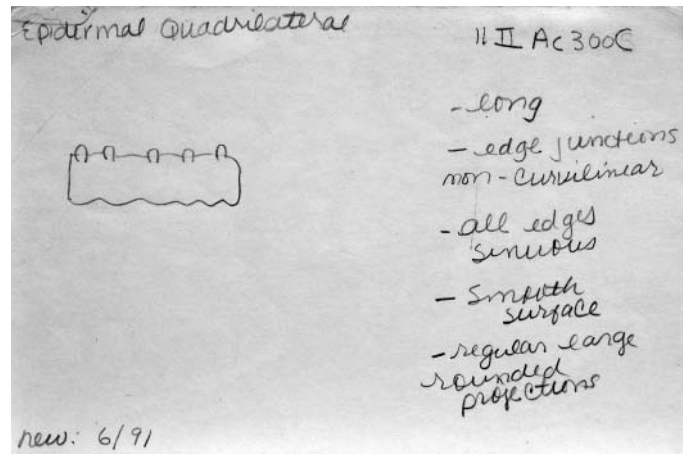
11IIAc300A photo1b.jpg



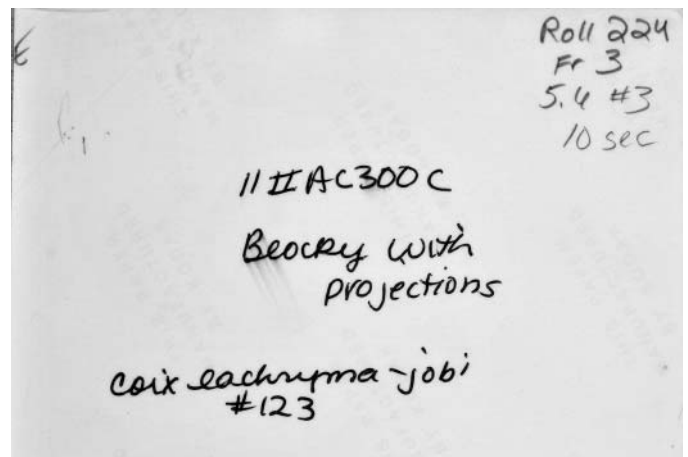
11IIAc300B card1.jpg



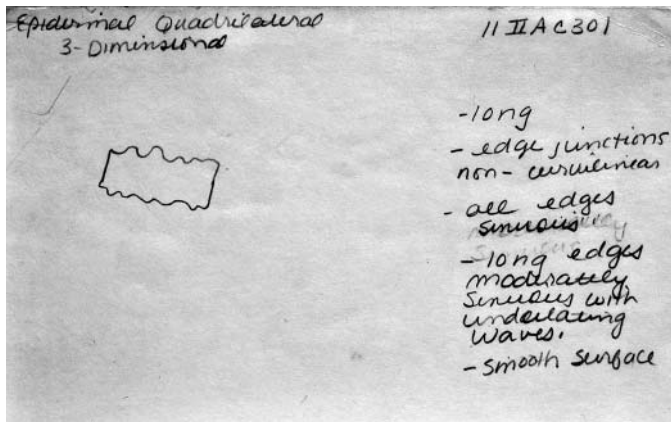
11IIAc300C photo1f.jpg



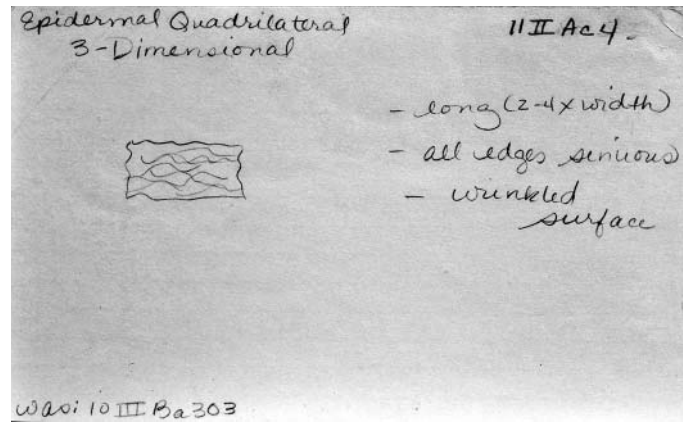
11IIAc300C card1.jpg



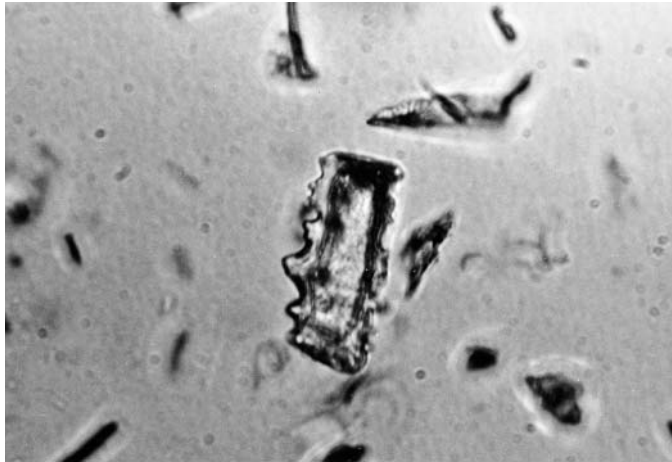
11IIAc300C photo1b.jpg



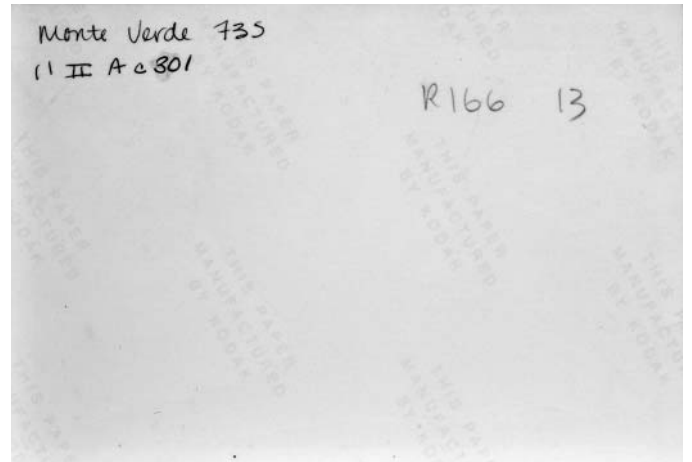
11IIAc301 card1.jpg



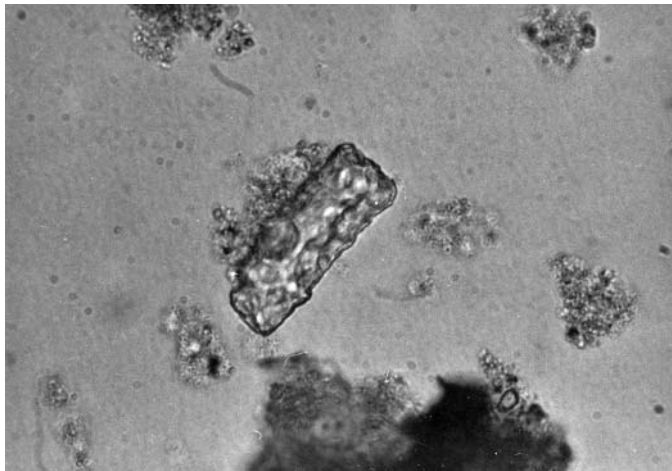
was: 10 III Ba 303
11IIAc4 card1.jpg



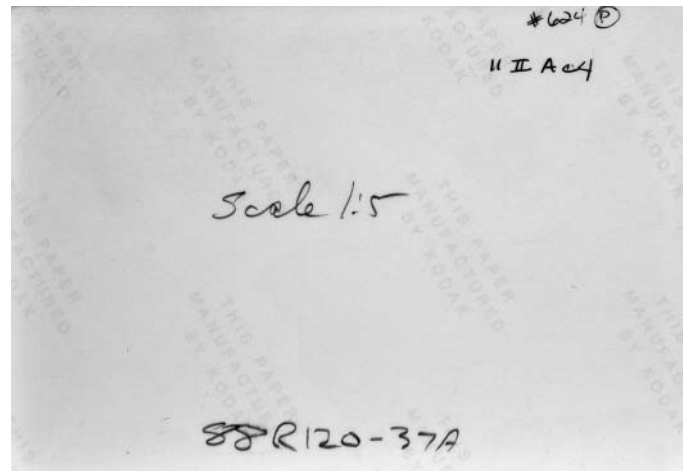
11IIAc301 photo1f.jpg



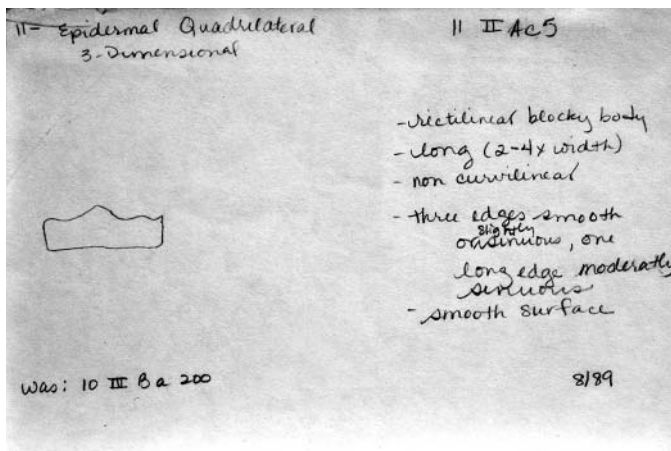
11IIAc301 photo1b.jpg



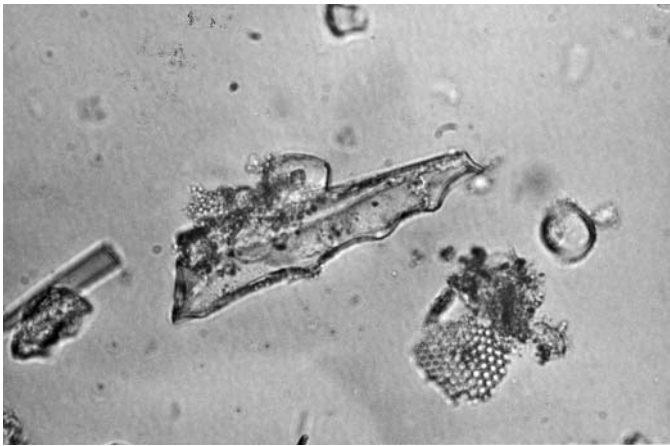
11IIAc301 photo2f.jpg



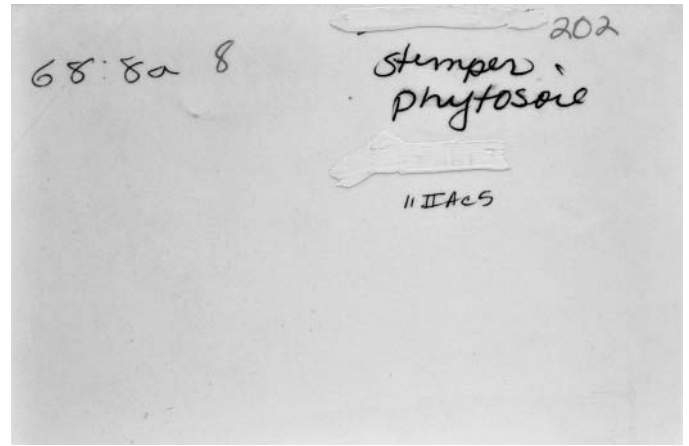
11IIAc301 photo2b.jpg



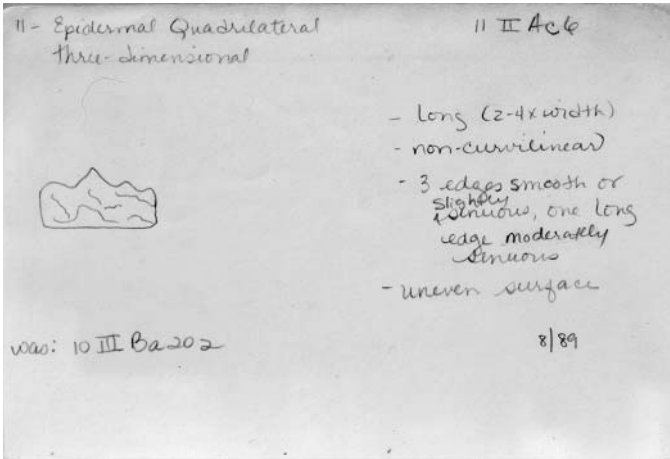
11IIAc5 card1.jpg



11IIAc301 photo3f.jpg



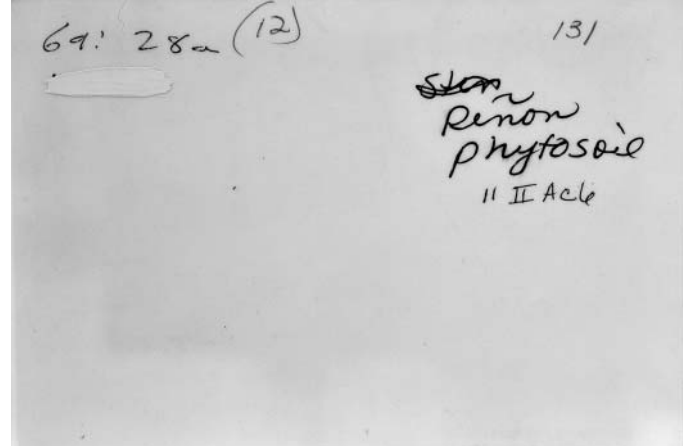
11IIAc301 photo3b.jpg



11IIAc6 card1.jpg



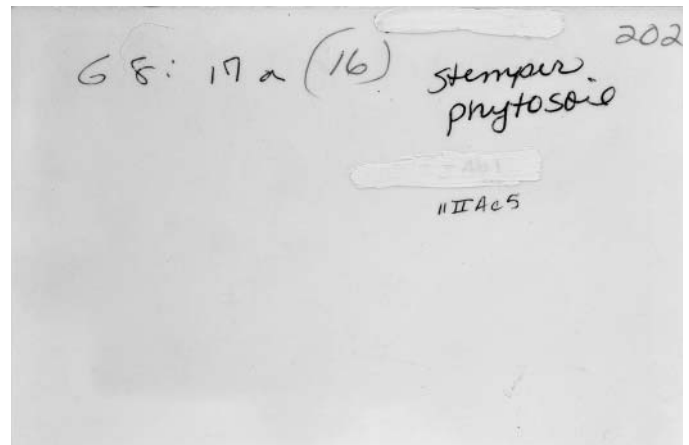
11IIAc6 photo1f.jpg



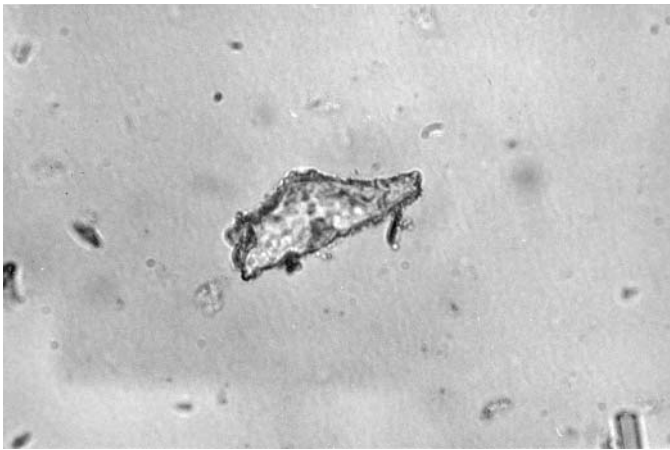
11IIAc6 photo1b.jpg



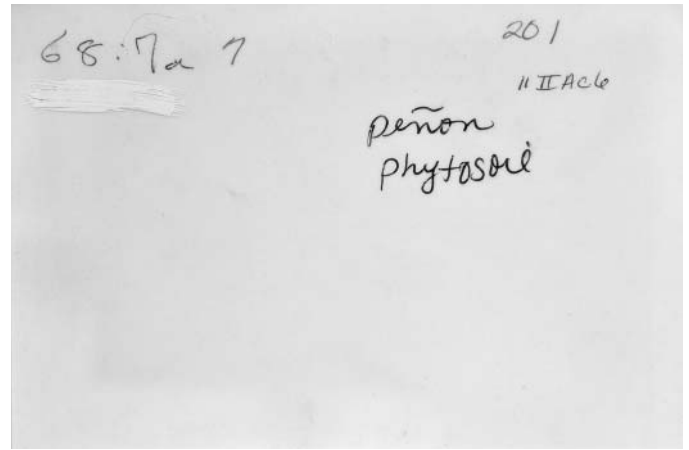
11IIAc6 photo2f.jpg



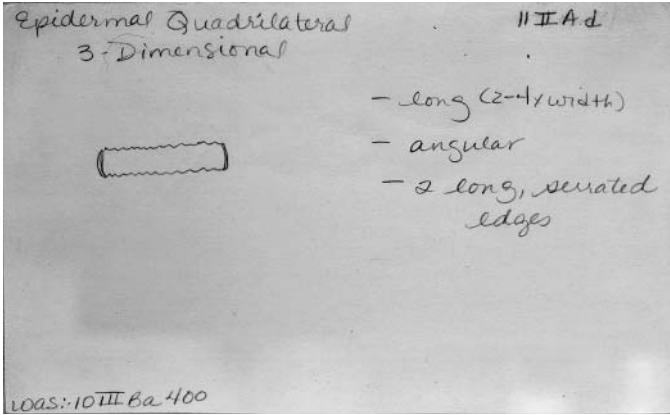
11IIAc6 photo2b.jpg



11IIAc6 photo3f.jpg



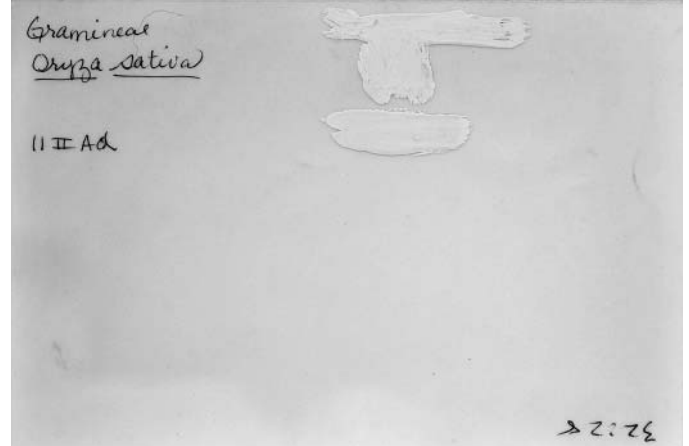
11IIAc6 photo3b.jpg



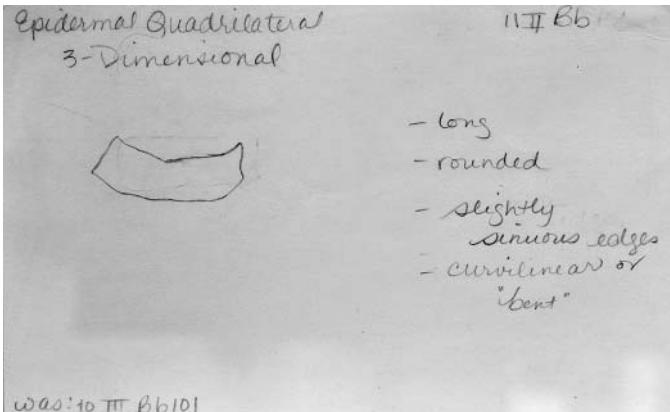
11IIAd card1.jpg



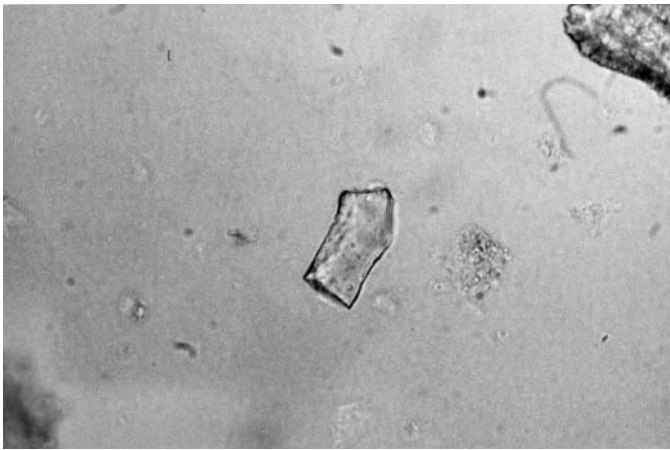
11IIAd photo1f.jpg



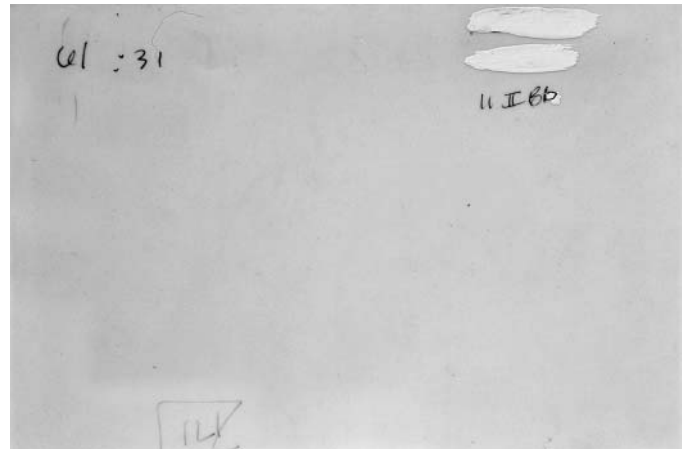
11IIAd photo1b.jpg



11IIBb card1.jpg



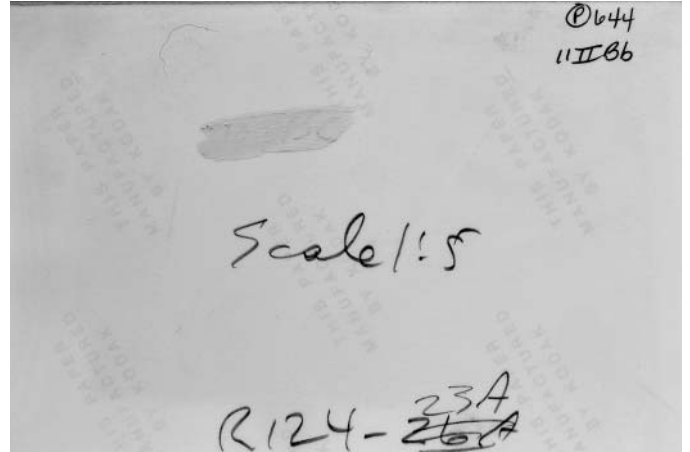
11IIBb photo1f.jpg



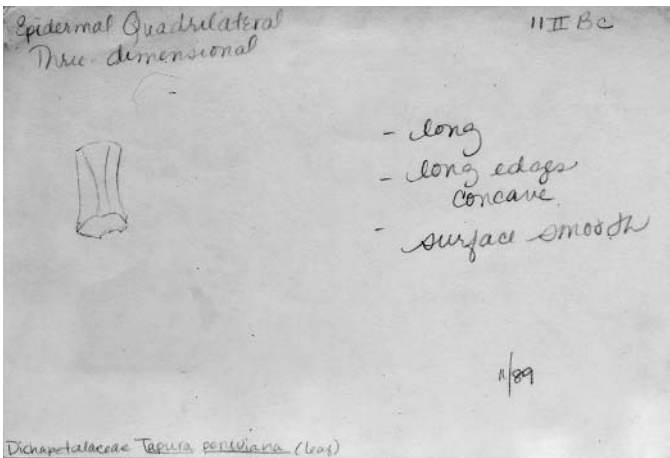
11IIBb photo1b.jpg



11IIBb photo2f.jpg



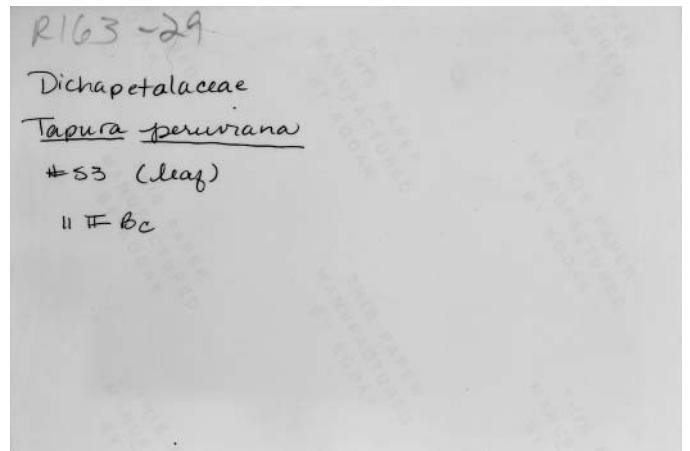
11IIBb photo2b.jpg



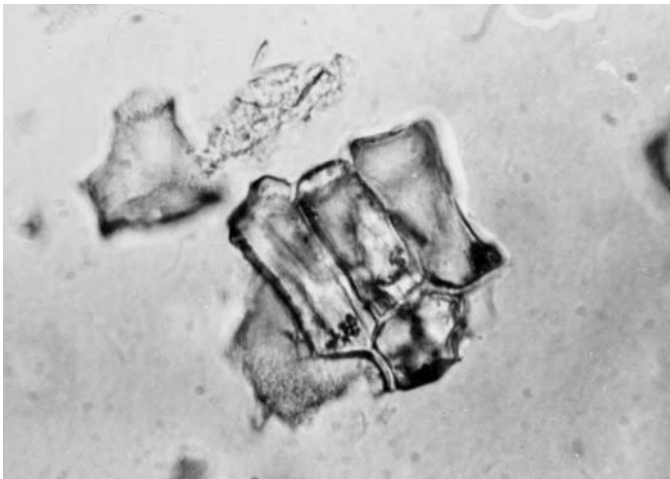
11IIBc card1.jpg



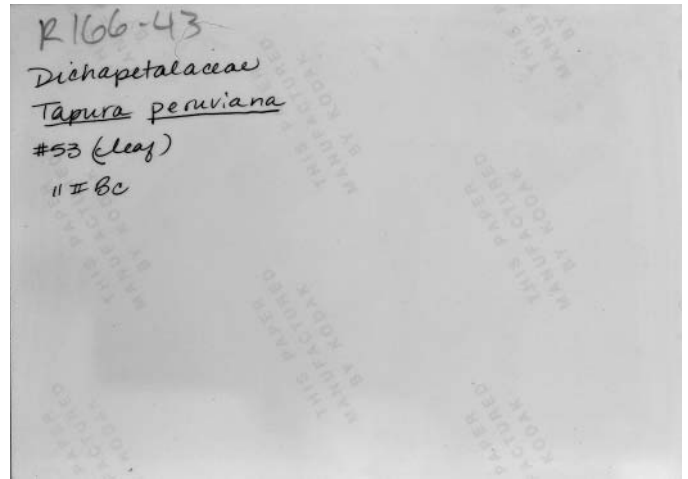
11IIBc photo1f.jpg



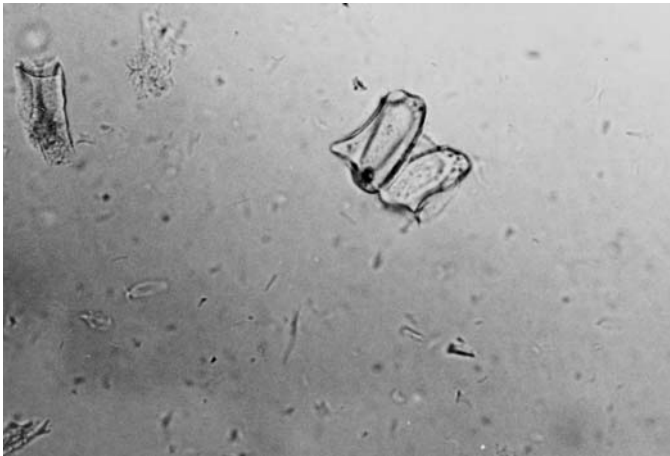
11IIBc photo1b.jpg



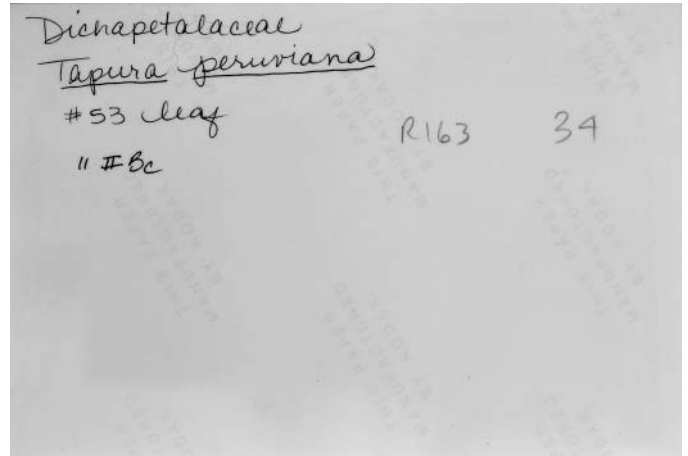
11IIBc photo2f.jpg



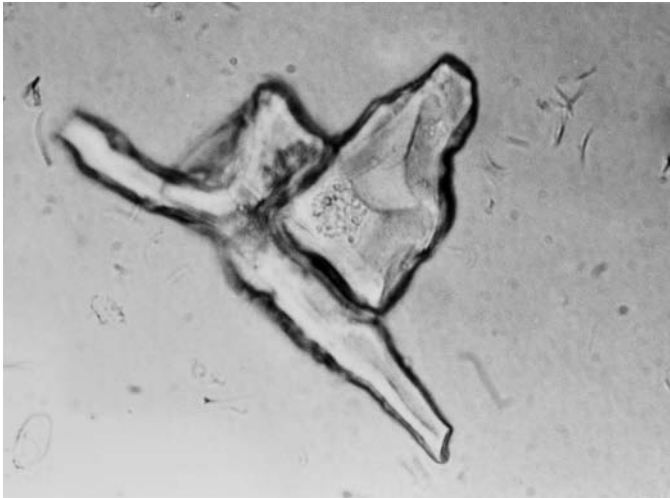
11IIBc photo2b.jpg



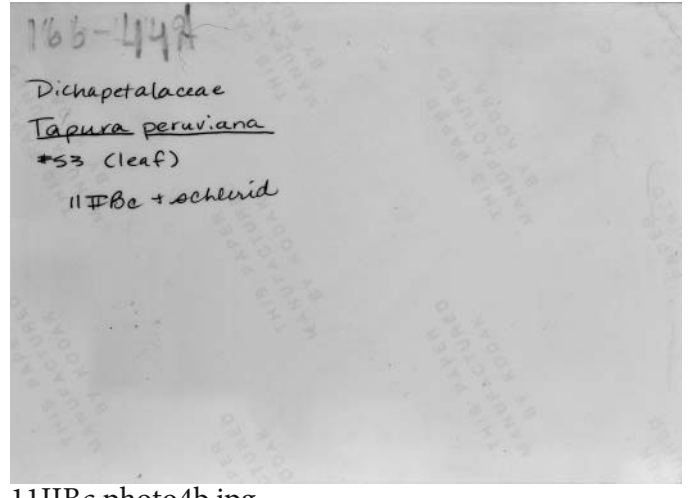
11IIBc photo3f.jpg



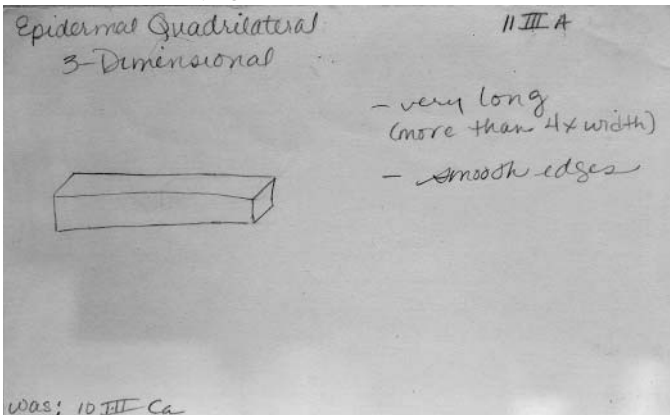
11IIBc photo3b.jpg



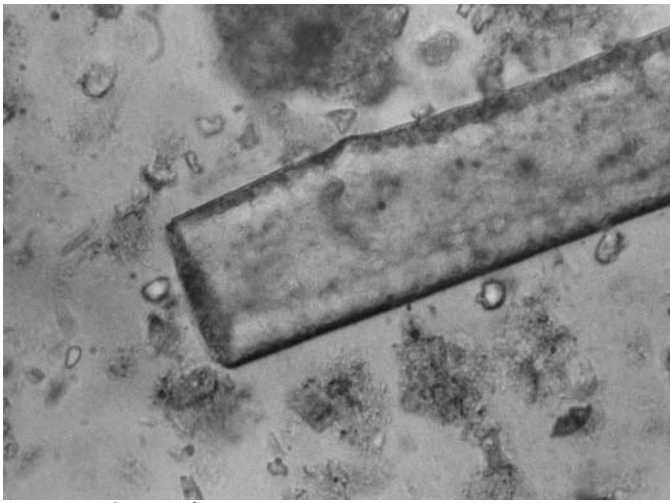
11IIBc photo4f.jpg



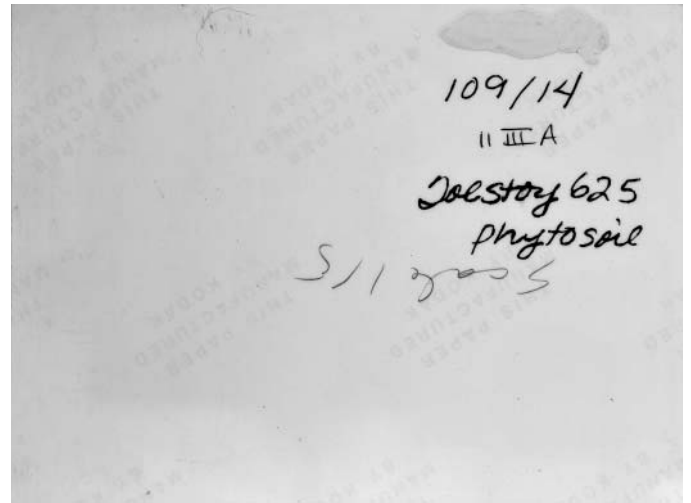
11IIBc photo4b.jpg



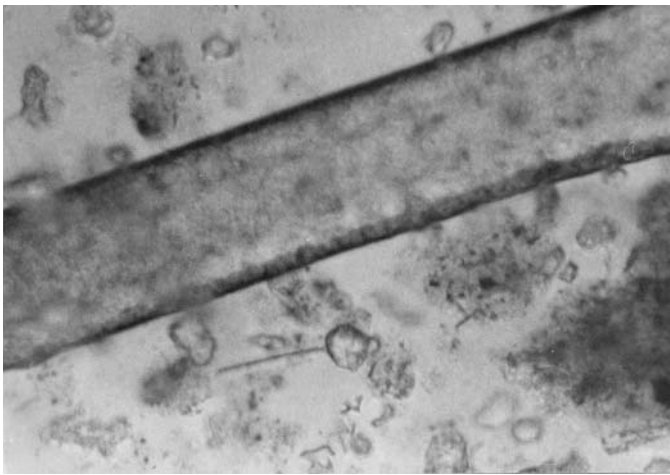
was: 10.III Ca
 11IIIA card1.jpg



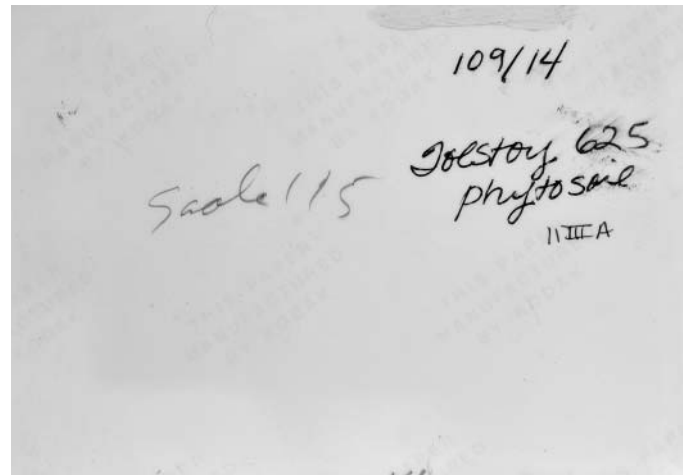
11IIIA photo1f.jpg



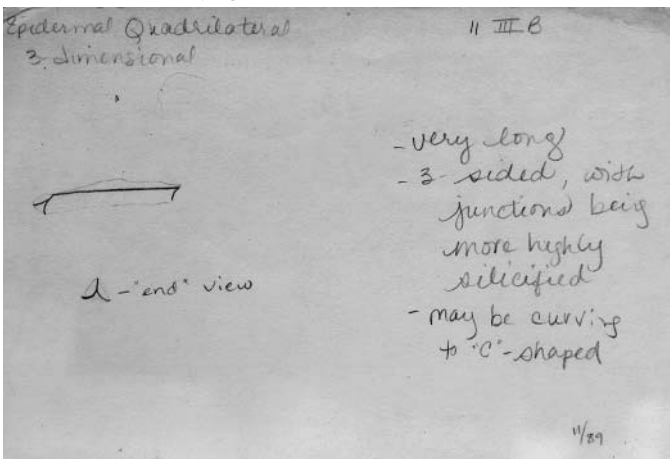
11IIIA photo1b.jpg



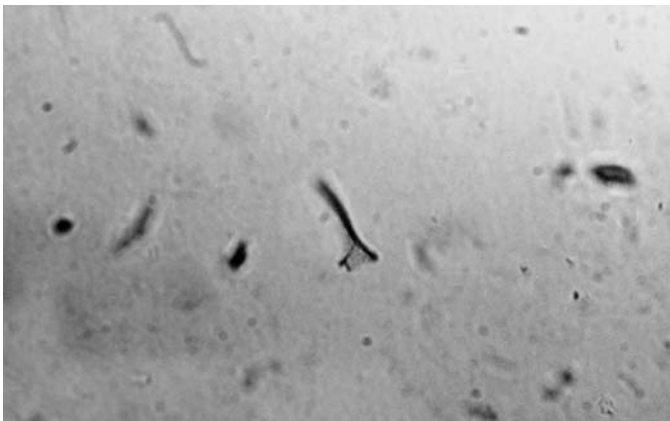
11IIIA photo2f.jpg



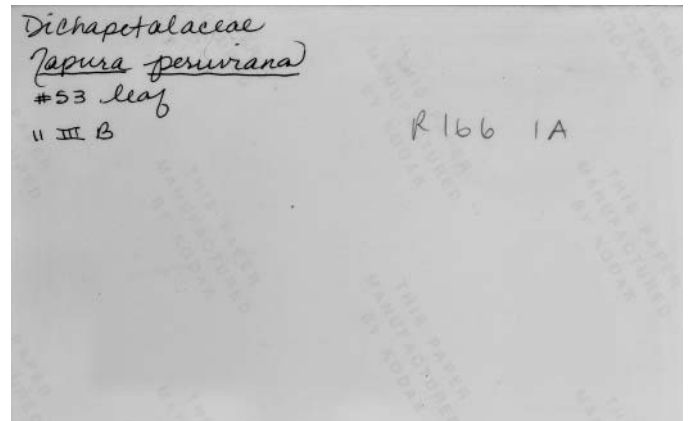
11IIIA photo2b.jpg



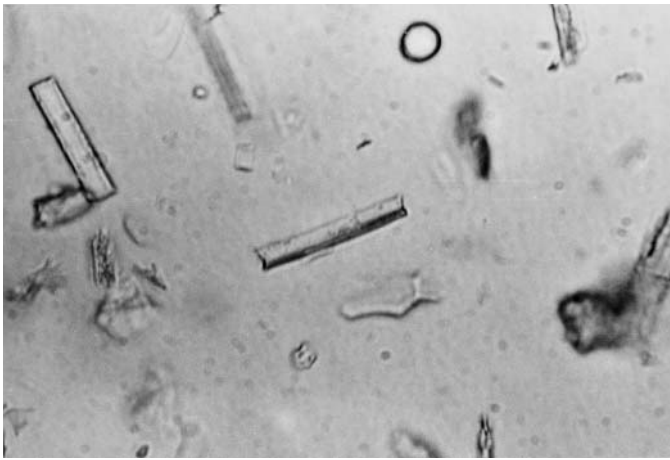
11IIIB card1.jpg



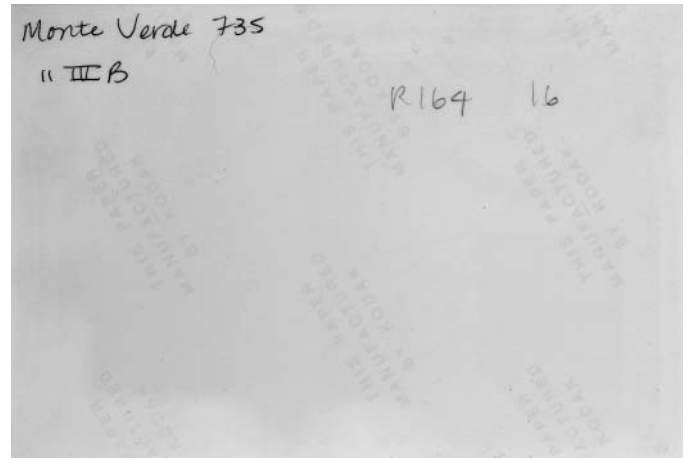
11IIIB photo1f.jpg



11IIIB photo1b.jpg



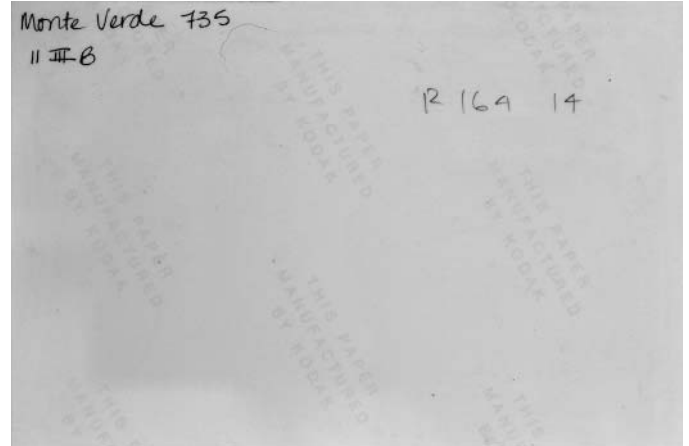
11IIIB photo2f.jpg



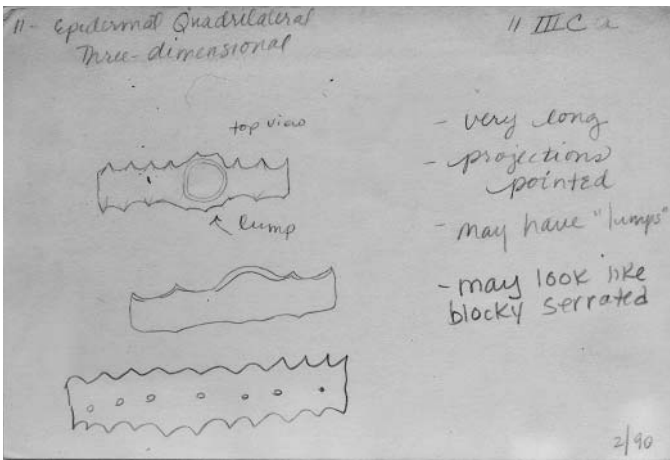
11IIIB photo2b.jpg



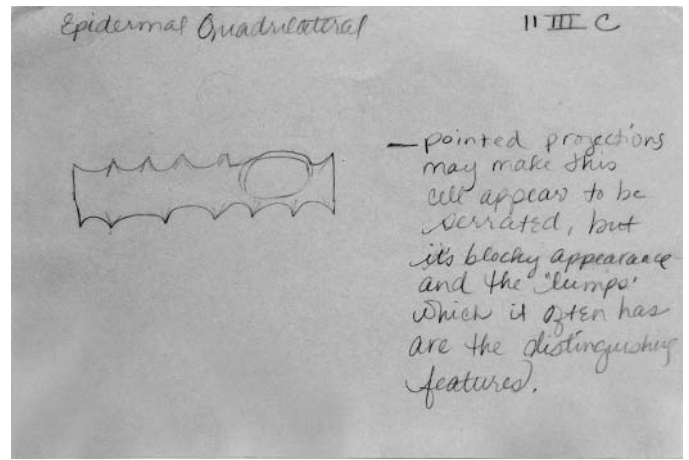
11IIIB photo3f.jpg



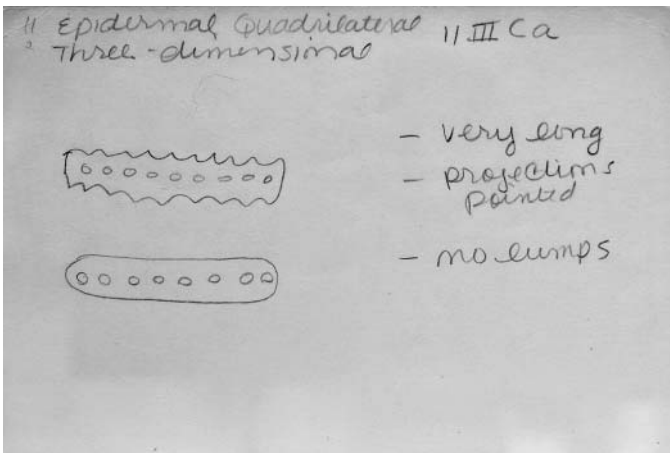
11IIIB photo3b.jpg



11IIIC card1.jpg



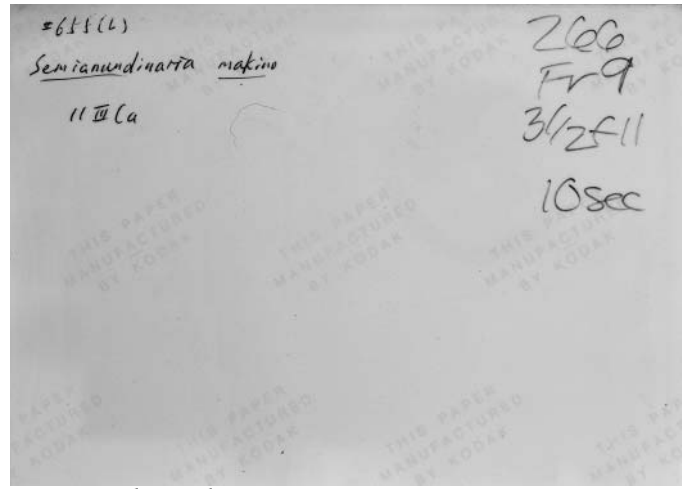
11IIIC card2.jpg



11IIICa card1.jpg



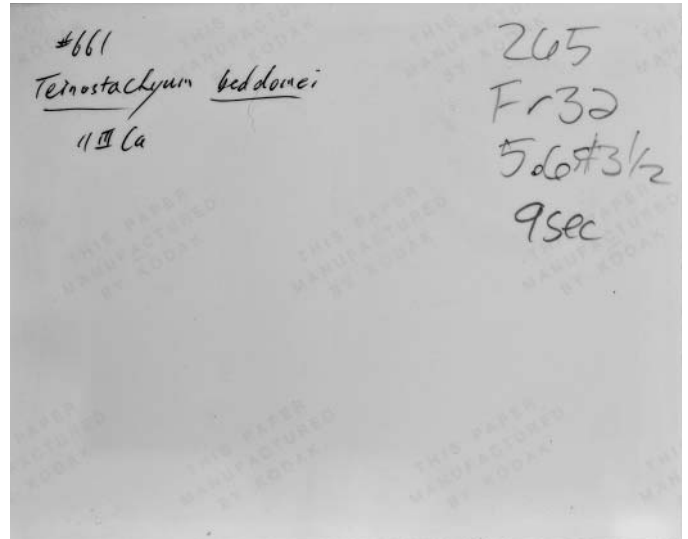
11IIICa photo1f.jpg



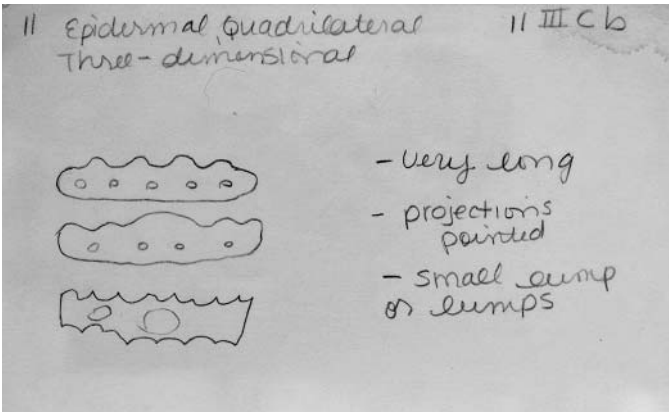
11IIICa photo1b.jpg



11IIICa photo2f.jpg



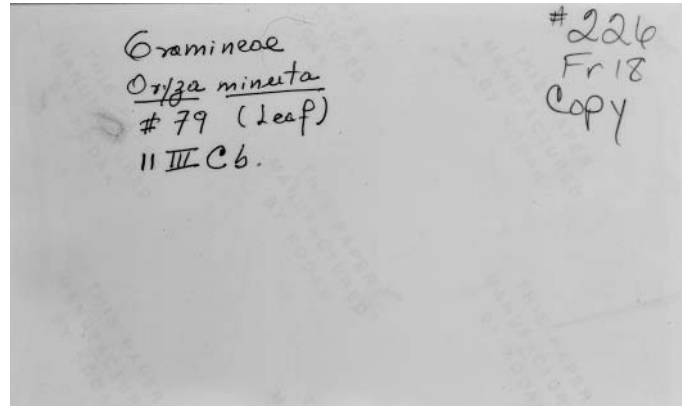
11IIICa photo2b.jpg



11IIICb card1.jpg



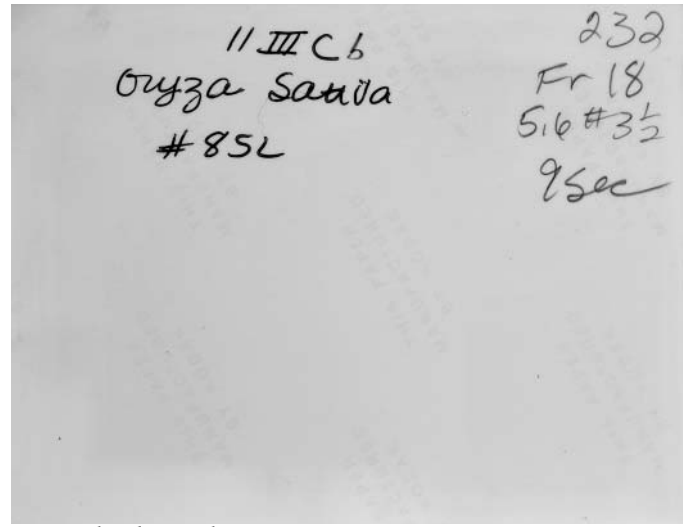
11IIICb photo1f.jpg



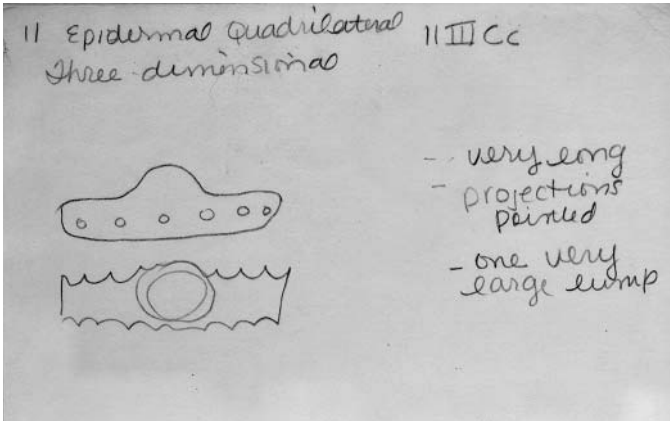
11IIICb photo1b.jpg



11IIICb photo2f.jpg



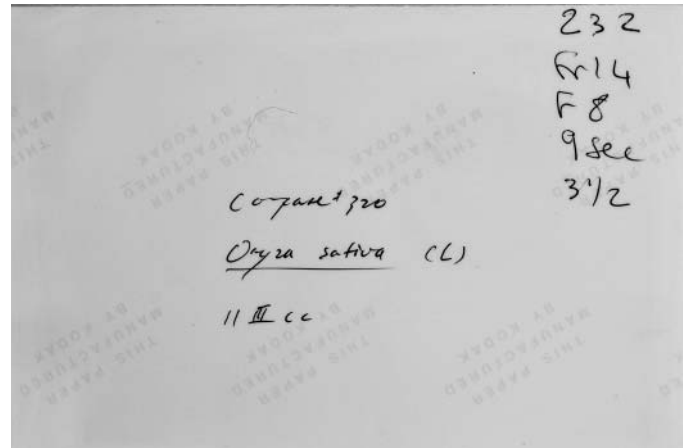
11IIICb photo2b.jpg



11IIICc card1.jpg



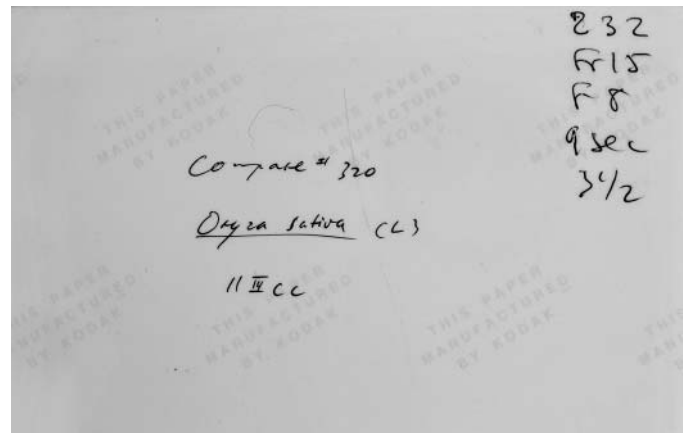
11IIICc photo1f.jpg



11IIICc photo1b.jpg



11IIICc photo2f.jpg



11IIICc photo2b.jpg

Category 12, epidemol quadrilateral, carbon-occluded.

- not further divided, includes all shapes + sizes of 10+11

12 card1.jpg